

CERTIFICATE OF LOCATION OF GOVERNMENT CORNER

County of Anoka

State of Minnesota

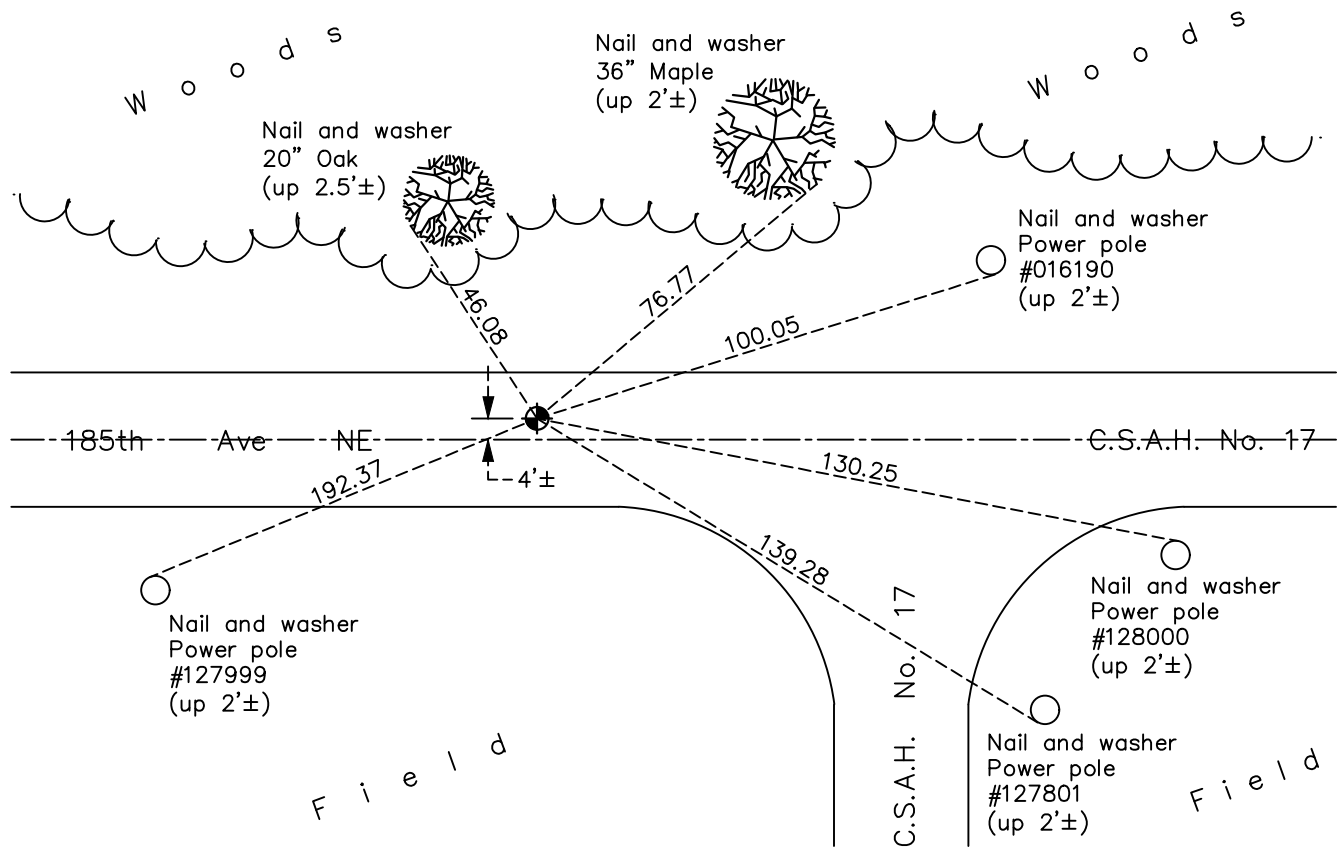
East 1/4 Corner of Sec. 36 Township 33 Range 23

On the 15th day of May, 1967, the described corner was evidenced by a P.K. nail set using an area resurvey

and to perpetuate the location of said corner, at the exact location thereof, a permanent marker was placed consisting of a cast iron monument

AND on the 5th day of October, 2021, said permanent marker was Found flush and the ties were updated

Updated reference ties are as shown below.



N.A.D. 1983 Coordinates
(1996 Adjustment)

County Project Coordinates	
Northing	<u>198228.3330</u>
Easting	<u>531899.4128</u>
Date	<u>7/11/02</u>

Revision Date
01/21/2022

I hereby certify that this United States public land survey monument record is correct and complete to the best of my knowledge and belief.
David Zieglmeier Date 2/1/23
 David Zieglmeier Anoka County Surveyor
 Minnesota License Number 46179

HISTORY OF GOVERNMENT CORNER

Page No. 118

County of Anoka

State of Minnesota

East 1/4 Corner of Sec. 36 Township 33 Range 23

CORNER HISTORY:

July 14, 1966 - Set P.K. nail using area resurvey and established ties to P.K. nail.

May 15, 1967 - Replaced P.K. nail with a cast iron monument flush and updated ties.

July 5, 1967 - Found cast iron monument and updated ties.

June 24, 1970 - Found cast iron monument and updated ties.

August 14, 1974 - Found cast iron monument, raised and updated ties.

July 22, 1977 - Found cast iron monument and updated ties.

June 12, 1981 - Found cast iron monument and updated ties.

June 21, 1984 - Found cast iron monument and updated ties.

August 18, 1992 - Found cast iron monument and updated ties.

August 18, 1997 - Found cast iron monument and updated ties.

July 9, 2002 - Found cast iron monument and updated ties.

July 11, 2002 - Established NAD 1983 (1996 adj.) Anoka County project coordinates by static GPS methods.

February 15, 2013 - Found cast iron monument. Verified position by VRS GPS methods. Updated ties.

June 6, 2018 - Found cast iron monument. Verified position by VRS GPS methods. Updated ties.

October 5, 2021 - Found cast iron monument. Verified position by VRS GPS methods. Updated ties.