

CERTIFICATE OF LOCATION OF GOVERNMENT CORNER

County of Anoka

State of Minnesota

Witness Corner of Sec. 6 Township 33 Range 23

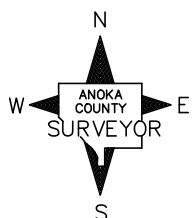
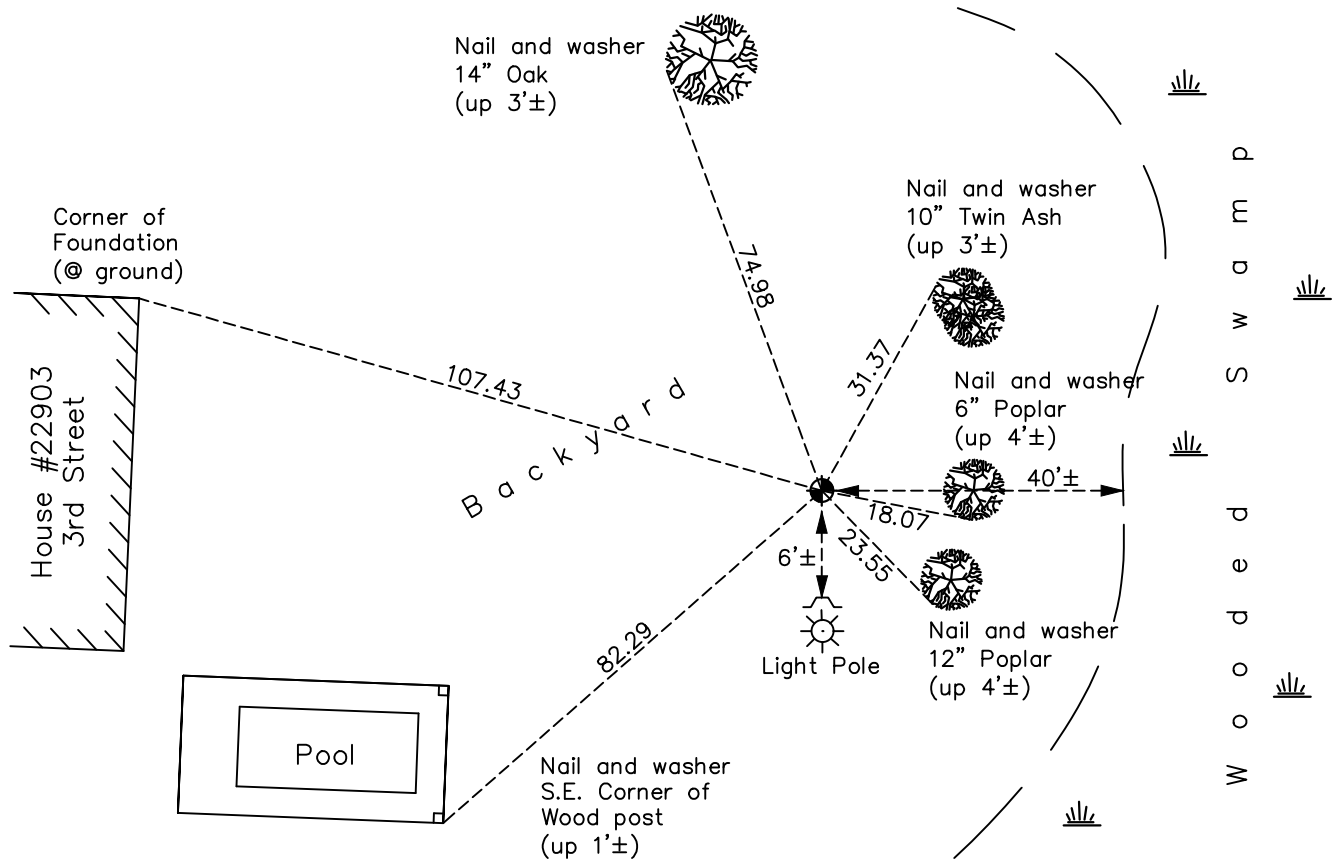
(On north line of section)

On the 11th day of March, 1969, the described corner was evidenced by area resurvey

and to perpetuate the location of said corner, at the exact location thereof, a permanent marker was placed consisting of a cast iron monument with a sign and post on the south side

AND on the 1st day of October, 2021, said permanent marker was found down 0.5'± and the ties were updated

Updated reference ties are as shown below.



Revision Date
01/21/2022

N.A.D. 1983 Coordinates
(1996 Adjustment)

County Project Coordinates	
Northing	227438.1858
Easting	501619.6788
Date	3/13/03

I hereby certify that this United States public land survey monument record is correct and complete to the best of my knowledge and belief.

David Zieglmeier Date 2/1/23

David Zieglmeier Anoka County Surveyor
Minnesota License Number 46179

HISTORY OF GOVERNMENT CORNER

County of Anoka

State of Minnesota

Witness Corner of Sec. 6 Township 33 Range 23
(On north line of section)

CORNER HISTORY:

March 11, 1969 - Set cast iron monument using area resurvey and established ties to monument.

November 6, 1990 - Found cast iron monument and updated ties.

August 27, 1992 - Found cast iron monument and updated ties.

March 13, 2003 - Found cast iron monument and updated ties. Established NAD 1983 (1996 adj.) Anoka County project coordinates by static GPS methods.

January 2, 2013 - Found cast iron monument and updated ties.

May 1, 2018 - Found cast iron monument. Verified position by VRS GPS methods. Updated ties.

October 1, 2021 - Found cast iron monument. Verified position by VRS GPS methods. Updated ties.