

CERTIFICATE OF LOCATION OF GOVERNMENT CORNER

County of Anoka

State of Minnesota

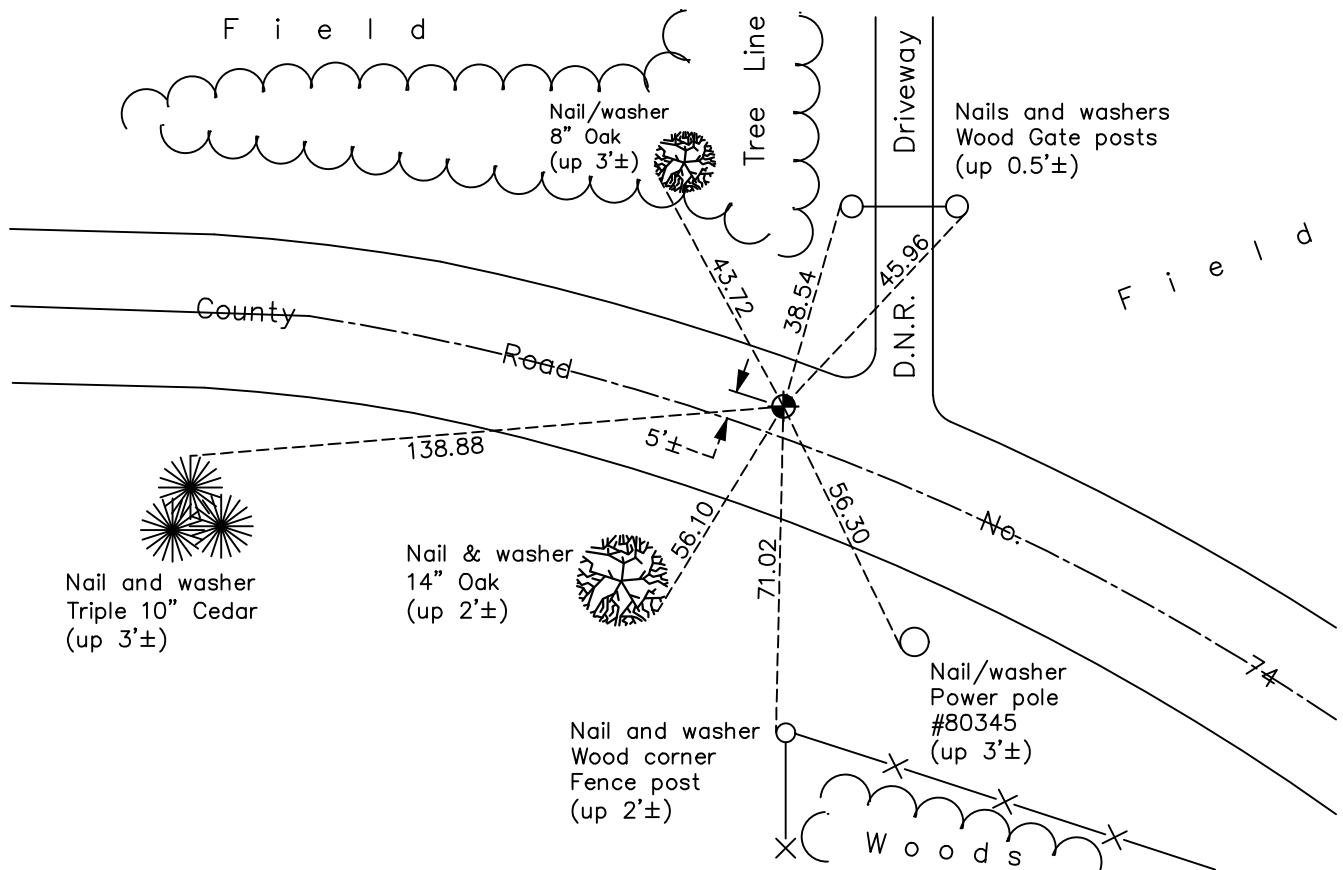
East 1/4 Corner of Sec. 12 Township 33 Range 23

On the 30th day of September, 1963, the described corner was evidenced by 1960 ties

and to perpetuate the location of said corner, at the exact location thereof, a permanent marker was placed consisting of a cast iron monument

AND on the 7th day of June, 2021, said permanent marker was reset CIM flush after road construction using static GPS methods. The ties were updated.

Updated reference ties are as shown below.



Revision Date

01/21/2022

N.A.D. 1983 Coordinates
(1996 Adjustment)

County Project Coordinates	
Northing	<u>219395.0542</u>
Easting	<u>531580.2993</u>
Date	<u>5/08/02</u>

I hereby certify that this United States public land survey monument record is correct and complete to the best of my knowledge and belief.

David Zieglmeier Date 2/1/23

David Zieglmeier Anoka County Surveyor
Minnesota License Number 46179

HISTORY OF GOVERNMENT CORNER

Page No. 122

County of Anoka

State of Minnesota

East 1/4 Corner of Sec. 12 Township 33 Range 23

CORNER HISTORY:

September 30, 1963 - Set cast iron monument using 1960 ties (1960 ties currently not found) and established ties to monument.

October 18, 1990 - Found cast iron monument and updated ties.

June 16, 1993 - Found cast iron monument and updated ties.

August 11, 1997 - Found cast iron monument and updated ties.

May 8, 2002 - Established NAD 1983 (1996 adj.) Anoka County project coordinates by static GPS methods.

January 29, 2013 - Found cast iron monument. Verified position by VRS GPS methods. Updated ties.

April 19, 2018 - Found cast iron monument flush. Verified position by VRS GPS methods. Updated ties.

April 27, 2021 - Found cast iron monument, verified position by VRS GPS methods updated ties prior to road construction. Removed monument.

June 7 2021 - Reset cast iron monument flush after road construction using static GPS methods. Updated ties.