

CERTIFICATE OF LOCATION OF GOVERNMENT CORNER

County of Anoka

State of Minnesota

Witness Corner of Sec. 24 Township 33 Range 23

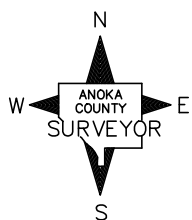
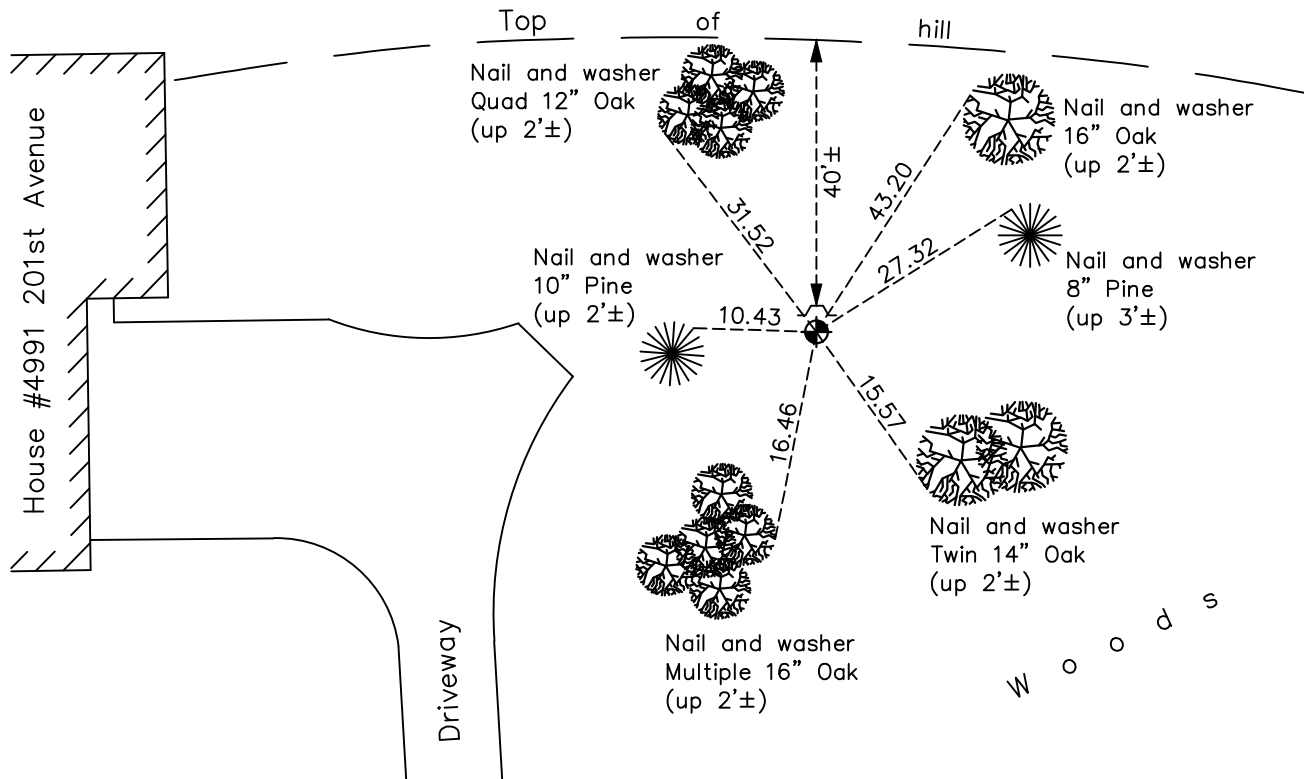
(On east line of NE1/4)

On the 5th day of November, 1970, the described corner was evidenced by area resurvey

and to perpetuate the location of said corner, at the exact location thereof, a permanent marker was placed consisting of a cast iron monument with a sign and post on the north side

AND on the 18th day of October, 2021, said permanent marker was found flush and the ties were updated

Updated reference ties are as shown below.



Revision Date

01/21/2022

N.A.D. 1983 Coordinates
(1996 Adjustment)

County Project Coordinates	
Northing	<u>209107.5817</u>
Easting	<u>531824.8166</u>
Date	<u>3/13/03</u>

I hereby certify that this United States public land survey monument record is correct and complete to the best of my knowledge and belief.

David Zieglmeier Date 2/1/23

David Zieglmeier Anoka County Surveyor
Minnesota License Number 46179

HISTORY OF GOVERNMENT CORNER

County of Anoka

State of Minnesota

Witness Corner of Sec. 24 Township 33 Range 23
(On east line of NE1/4)

CORNER HISTORY:

November 5, 1970 - Set cast iron monument using area resurvey and established ties to monument.

June 13, 1987 - Found cast iron monument and updated ties.

July 14, 1993 - Found cast iron monument and updated ties.

October 18, 1990 - Found cast iron monument and updated ties.

March 13, 2003 - Established NAD 1983 (1996 adj.) Anoka County project coordinates by static GPS methods.

January 14, 2013 - Found cast iron monument and updated ties.

May 4, 2018 - Found cast iron monument down 0.1'± and updated ties.

October 18, 2021 - Found cast iron monument and updated ties.