

# CERTIFICATE OF LOCATION OF GOVERNMENT CORNER

County of Anoka

State of Minnesota

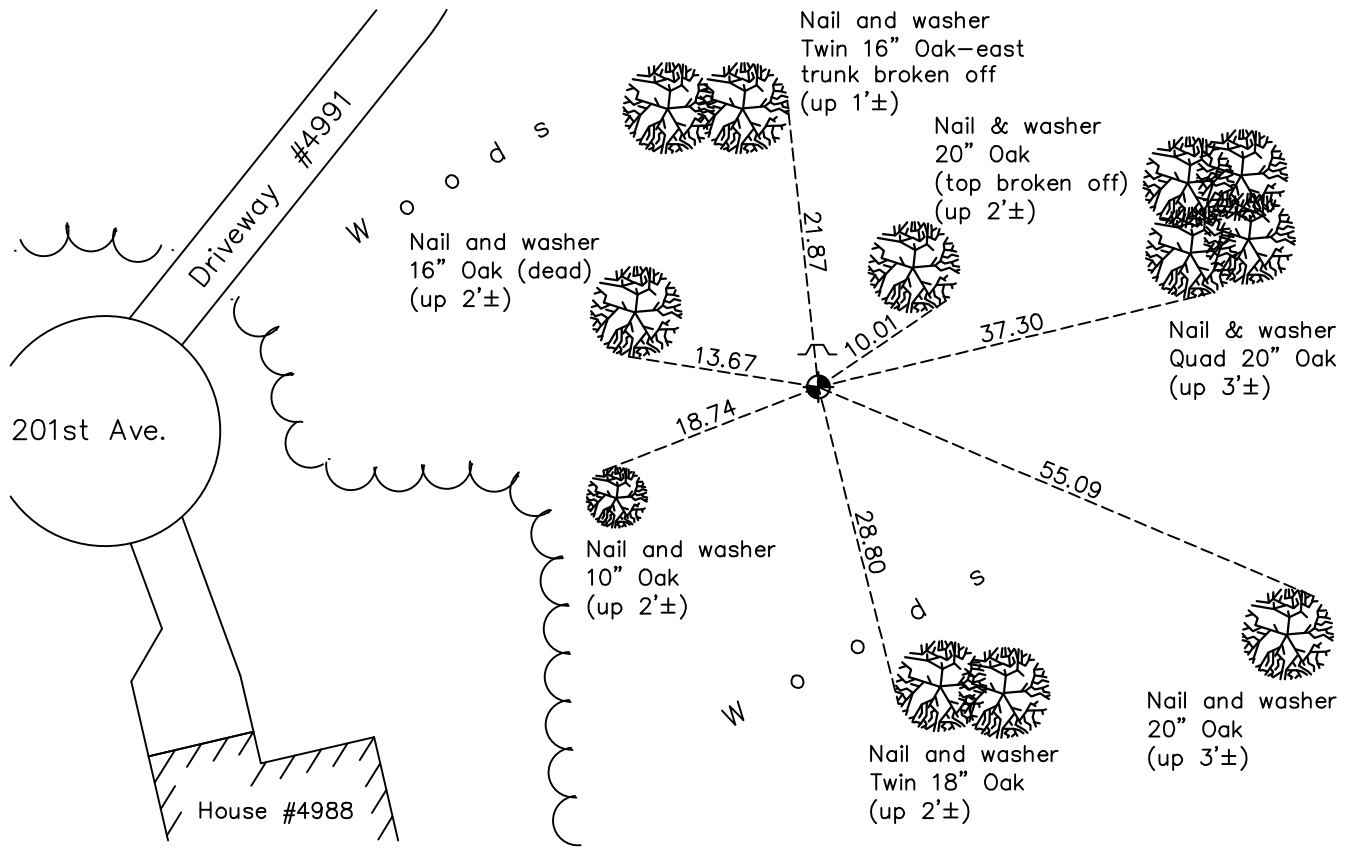
## East 1/4 Corner of Sec. 24 Township 33 Range 23

On the 16th day of March, 1970, the described corner was evidenced by a 1" iron rod from Ray Carlson ties

and to perpetuate the location of said corner, at the exact location thereof, a permanent marker was placed consisting of a cast iron monument with a sign and post on the north side

AND on the 10th day of October, 2021, said permanent marker was found down 0.1'± and the ties were updated

Updated reference ties are as shown below.



Revision Date  
01/21/2022

N.A.D. 1983 Coordinates  
(1996 Adjustment)

County Project Coordinates	
Northing	<u>208812.8759</u>
Easting	<u>531832.3975</u>
Date	<u>3/13/03</u>

I hereby certify that this United States public land survey monument record is correct and complete to the best of my knowledge and belief.  
*David Zieglmeier* Date 2/1/23  
David Zieglmeier Anoka County Surveyor  
Minnesota License Number 46179

# HISTORY OF GOVERNMENT CORNER

Page No. 125

County of Anoka

State of Minnesota

East 1/4 Corner of Sec. 24 Township 33 Range 23

## **CORNER HISTORY:**

March 16, 1970 - Found 1" iron rod using Roy Carlson ties and replaced with a cast iron monument. Updated ties to monument.

November 5, 1990 - Found cast iron monument and updated ties.

June 17, 1993 - Found cast iron monument and updated ties.

March 13, 2003 - Established NAD 1983 (1996 adj.) Anoka County project coordinates by static GPS methods.

January 14, 2013 - Found cast iron monument and updated ties.

May 4, 2018 - Found cast iron monument down 0.1'± and updated ties.

October 10, 2021 - Found cast iron monument down 0.1'± and updated ties.