

CERTIFICATE OF LOCATION OF GOVERNMENT CORNER

County of Anoka

State of Minnesota

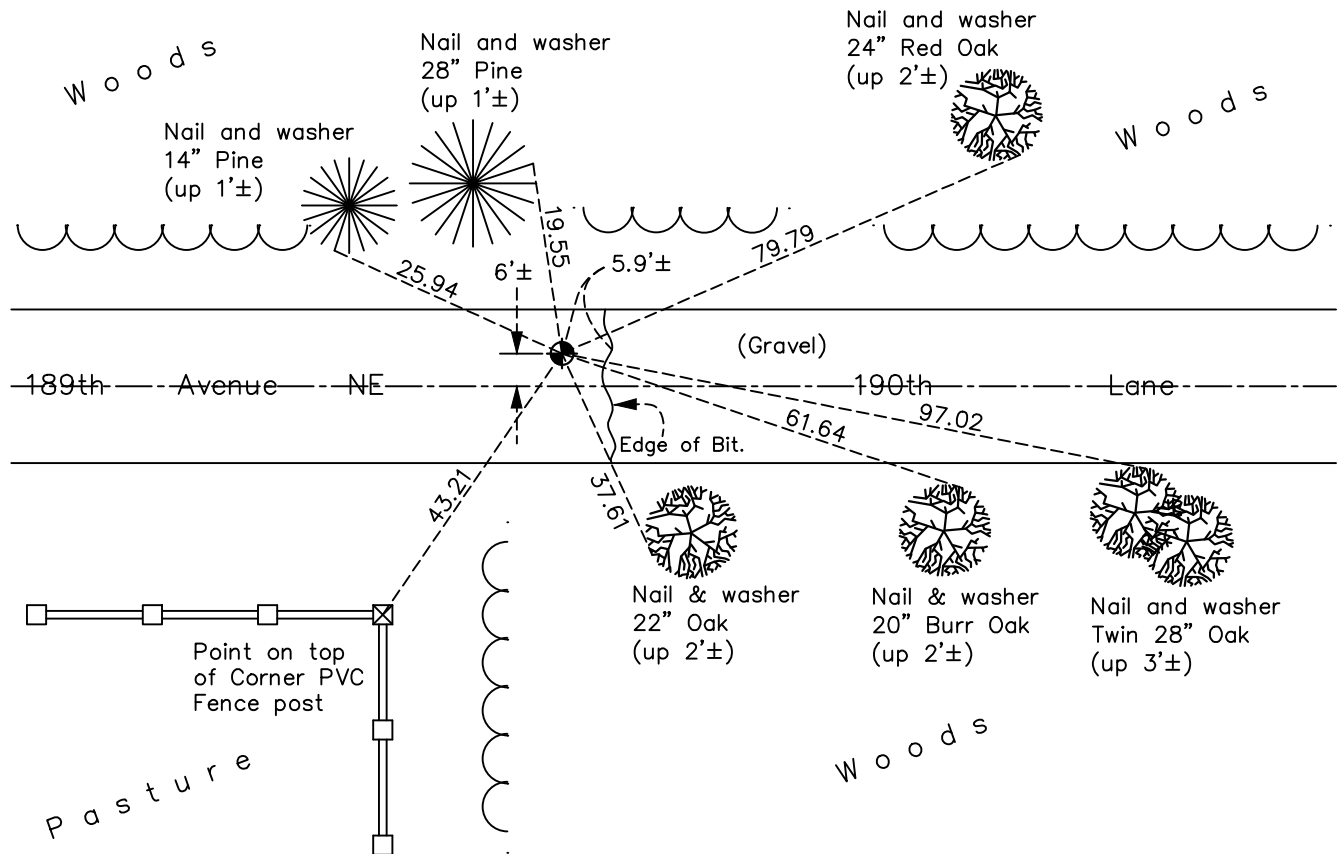
Southeast Corner of Sec. 25 Township 33 Range 23

On the 15th day of June, 1960, the described corner was evidenced by a concrete monument

and to perpetuate the location of said corner, at the exact location thereof, a permanent marker was placed consisting of a cast iron monument

AND on the 5th day of October, 2021, said permanent marker was found flush and the ties were updated

Updated reference ties are as shown below.



Revision Date
 01/21/2022

N.A.D. 1983 Coordinates
 (1996 Adjustment)

County Project Coordinates	
Northing	<u>200877.2106</u>
Easting	<u>531835.8958</u>
Date	<u>7/11/02</u>

I hereby certify that this United States public land survey monument record is correct and complete to the best of my knowledge and belief.
David Zieglmeier Date 2/1/23
 David Zieglmeier Anoka County Surveyor
 Minnesota License Number 46179

HISTORY OF GOVERNMENT CORNER

Page No. 126

County of Anoka

State of Minnesota

Southeast Corner of Sec. 25 Township 33 Range 23

CORNER HISTORY:

June 15, 1960 - Found concrete monument and replaced with a cast iron monument. Updated ties to monument.

October 17, 1990 - Found cast iron monument and updated ties.

August 14, 1997 - Found cast iron monument and updated ties.

March 13, 2001 - Found cast iron monument, raised and updated ties.

July 11, 2002 - Established NAD 1983 (1996 adj.) Anoka County project coordinates by static GPS methods.

July 16, 2002 - Found cast iron monument and updated ties.

April 26, 2013 - Found cast iron monument broken. Checked position of broken monument center fin with VRS GPS methods and corner ties.

November 19, 2013 - Checked position of broken monument center fin using static GPS methods.

November 25, 2013 - Set cast iron monument using static GPS methods. Verified position by VRS GPS methods. Updated ties.

June 6, 2018 - Found cast iron monument flush. Verified position by VRS GPS methods. Updated ties.

October 5, 2021 - Found cast iron monument flush. Verified position by VRS GPS methods. Updated ties.