

# CERTIFICATE OF LOCATION OF GOVERNMENT CORNER

County of Anoka

State of Minnesota

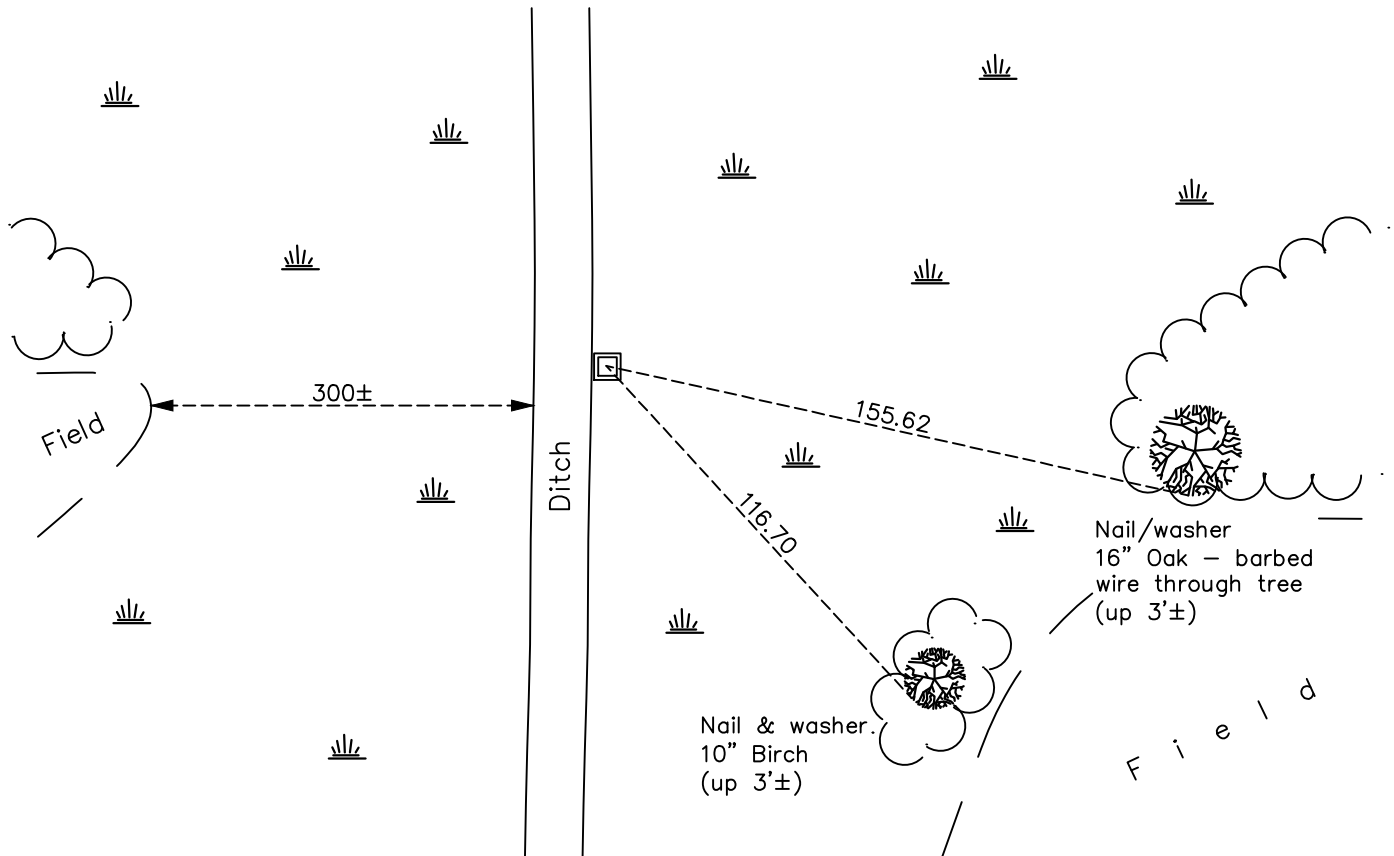
## Northeast Corner of Sec. 25 Township 34 Range 23

On the 3rd day of October, 1978, the described corner was evidenced by area resurvey

and to perpetuate the location of said corner, at the exact location thereof, a permanent marker was placed consisting of a red and white 2" square steel Telspar monument

AND on the 21st day of March, 2023, said permanent marker was removed and replaced with a new 2" square steel Telspar and cap w/ punch mark using ACS RTK method. Updated ties.

Updated reference ties are as shown below.



Revision Date  
 4/05/2023

N.A.D. 1983 Coordinates  
 (1996 Adjustment)

County Project Coordinates	
Northing	<u>238016.7718</u>
Easting	<u>531973.3199</u>
Date	<u>4/03/03</u>

I hereby certify that this United States public land survey monument record is correct and complete to the best of my knowledge and belief.  
*David Zieglmeier* Date 12/11/23  
 David Zieglmeier Anoka County Surveyor  
 Minnesota License Number 46179

# HISTORY OF GOVERNMENT CORNER

Page No. 51

County of Anoka

State of Minnesota

## Northeast Corner of Sec. 25 Township 34 Range 23

### **CORNER HISTORY:**

October 3, 1978 - Set red and white iron pipe using area resurvey and established ties to monument.

June 15, 1982 - Found red and white iron pipe and updated ties.

June 29, 1995 - Found red and white iron pipe and updated ties.

April 3, 2003 - Established NAD 1983 (1996 adj.) Anoka County project coordinates by static GPS methods.

April 26, 2012 - Found red and white square Telspar, verified position by VRS GPS methods and updated ties.

November 9, 2021 - Found red and white square Telspar up 2'± without a cap, verified position by VRS GPS methods and updated ties.

March 21, 2023 - Found and removed leaning Red & White Telspar. Replaced with 2" square steel Telspar and cap w/ punchmark, set using ACS RTK GPS method to published coordinates. Updated ties after replacement.