

CERTIFICATE OF LOCATION OF GOVERNMENT CORNER

County of Anoka

State of Minnesota

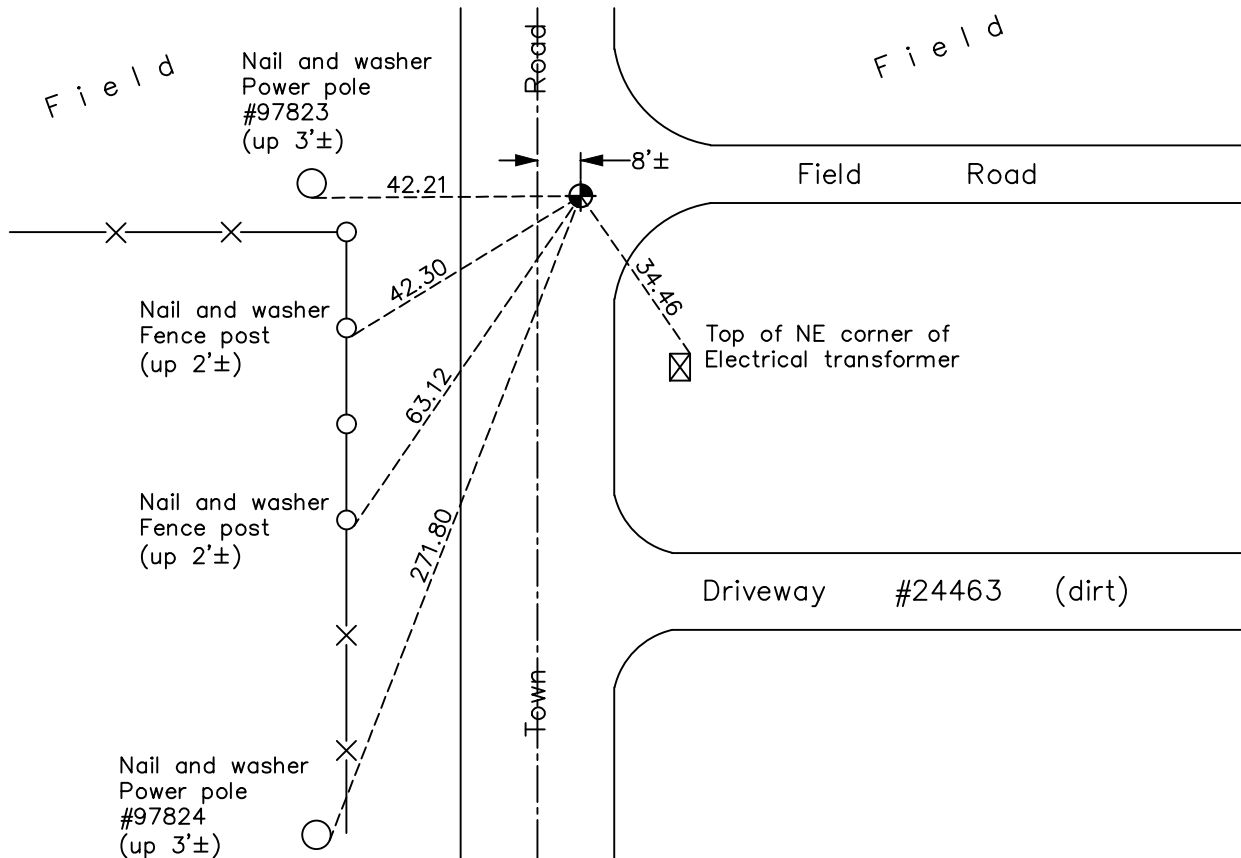
Northeast Corner of Sec. 26 Township 34 Range 23

On the 19th day of April, 1960, the described corner was evidenced by an Isanti County
cast iron monument

and to perpetuate the location of said corner, at the exact location thereof, a permanent marker
was placed consisting of the same cast iron monument

AND on the 2nd day of November, 2021, said permanent marker was found down 1'± and
the ties were updated

Updated reference ties are as shown below.



Revision Date
01/07/2022

N.A.D. 1983 Coordinates
(1996 Adjustment)

County Project Coordinates	
Northing	<u>238217.8326</u>
Easting	<u>526652.1547</u>
Date	<u>5/22/02</u>

I hereby certify that this United States public land survey monument record is correct and complete to the best of my knowledge and belief.

David Zieglermeier Date 2/2/23

David M. Zieglermeier, Anoka County Surveyor
Minnesota License Number 46179

HISTORY OF GOVERNMENT CORNER

Page No. 53

County of Anoka

State of Minnesota

Northeast Corner of Sec. 26 Township 34 Range 23

CORNER HISTORY:

April 19, 1960 - Found Isanti County cast iron monument down 0.5'± and established ties to monument.

June 20, 1967 - Found cast iron monument and updated ties.

August 16, 1971 - Found cast iron monument and updated ties.

August 6, 1975 - Found cast iron monument and updated ties.

August 15, 1978 - Found cast iron monument and updated ties.

August 28, 1981 - Found cast iron monument and updated ties.

August 1, 1986 - Found cast iron monument and updated ties.

August 4, 1992 - Found cast iron monument and updated ties.

August 11, 1997 - Found cast iron monument and updated ties.

May 22, 2002 - Found cast iron monument and updated ties. Established NAD 1983 (1996 adj.) Anoka County project coordinates by static GPS methods.

July 25, 2012 - Found cast iron monument down 1'±. Verified position by VRS GPs methods. Updated ties.

June 18, 2018 - Found cast iron monument down 1'±. Verified position by VRS GPS methods. Updated ties.

November 2, 2021 - Found cast iron monument down 1'±. Verified position by VRS GPS methods. Updated ties.