

CERTIFICATE OF LOCATION OF GOVERNMENT CORNER

County of Anoka

State of Minnesota

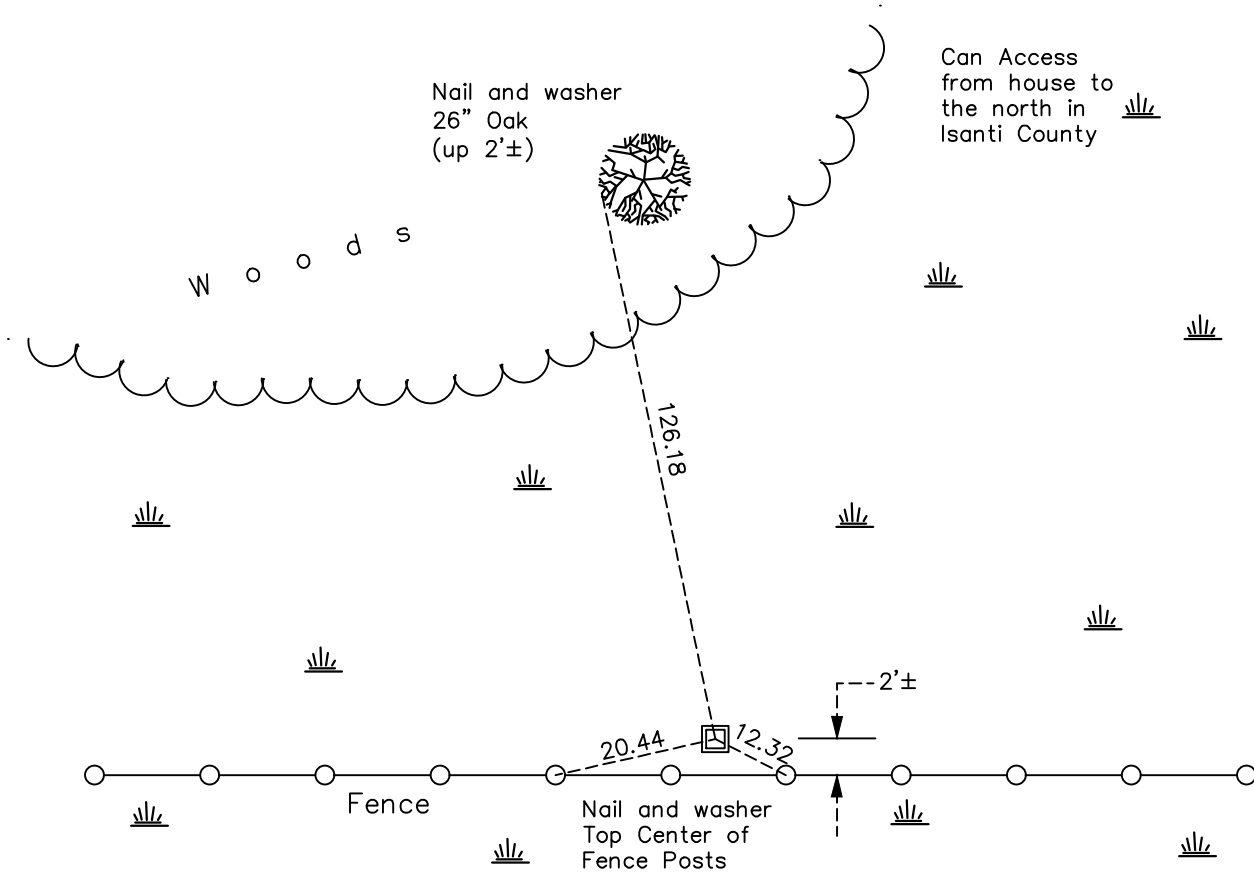
North 1/4 Corner of Sec. 26 Township 34 Range 23

On the 10th day of May, 1979, the described corner was evidenced by area resurvey

and to perpetuate the location of said corner, at the exact location thereof, a permanent marker was placed consisting of a red and white 2" square steel Telspar monument with a sign attached facing south

AND on the 15th day of November, 2021, said permanent marker was found up 3'± and the ties were updated

Updated reference ties are as shown below.



Revision Date
 01/07/2022

N.A.D. 1983 Coordinates
 (1996 Adjustment)

County Project Coordinates	
Northing	238179.6237
Easting	524022.8254
Date	4/08/03

I hereby certify that this United States public land survey monument record is correct and complete to the best of my knowledge and belief.

David Zieglsmeier Date 2/2/23

David M. Zieglsmeier, Anoka County Surveyor
 Minnesota License Number 46179

HISTORY OF GOVERNMENT CORNER

Page No. 54

County of Anoka

State of Minnesota

North 1/4 Corner of Sec. 26 Township 34 Range 23

CORNER HISTORY:

May 10, 1979 - Set red and white iron pipe up 3'± w/sign using area resurvey. Established ties to iron pipe.

April 8, 2003 - Established NAD 1983 (1996 adj.) Anoka County project coordinates by static GPS methods.

December 27, 2012 - Found red and white 2" square steel Telspar monument w/sign and updated ties.

March 7, 2019 - Found red and white 2" square steel Telspar monument w/sign up 3'±. Verified position by VRS GPS methods. Updated ties.

November 15, 2021 - Found 2" square steel Telspar monument w/sign up 3'±. Verified position by VRS GPS methods. Updated ties.