

CERTIFICATE OF LOCATION OF GOVERNMENT CORNER

County of Anoka

State of Minnesota

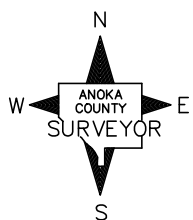
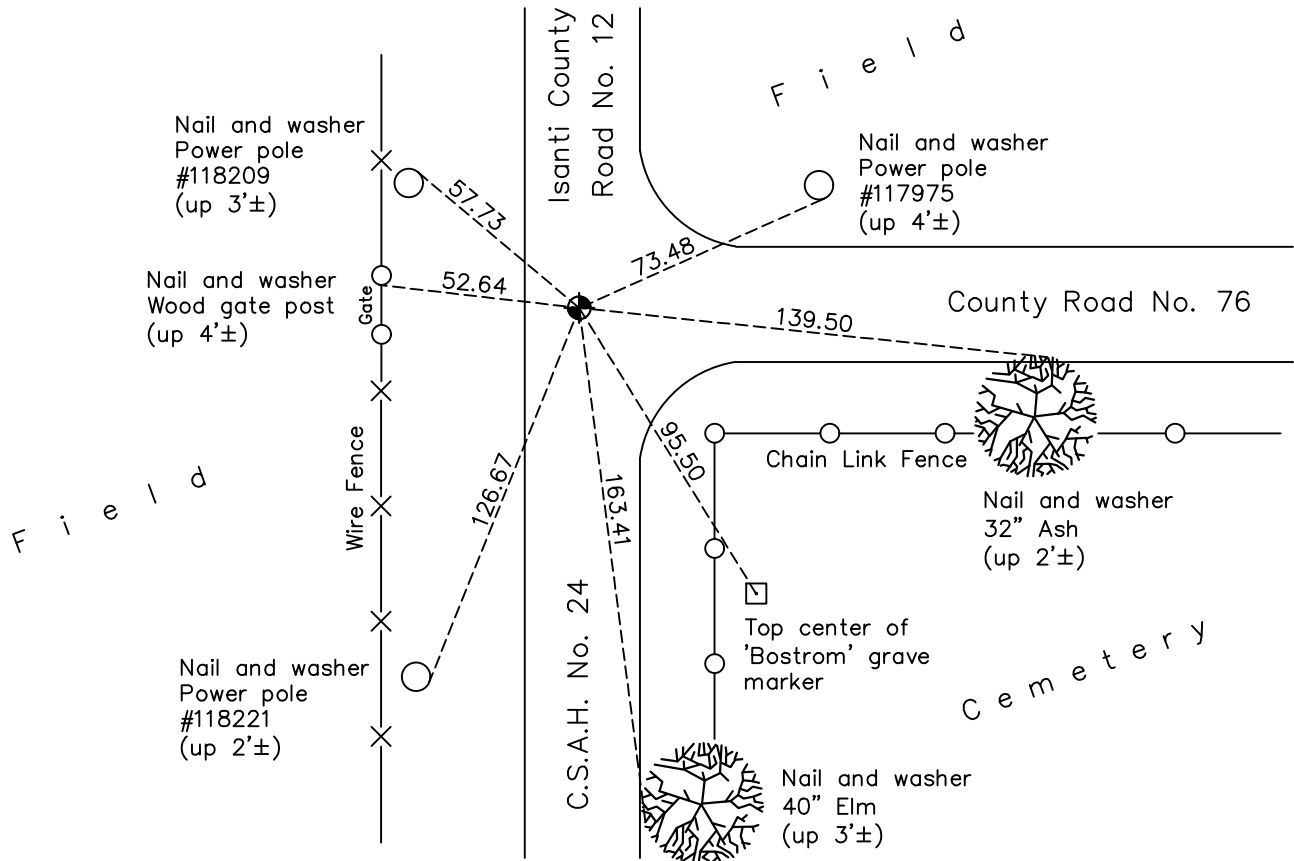
Northeast Corner of Sec. 27 Township 34 Range 23

On the 20th day of July, 1966, the described corner was evidenced by an iron pipe over a sandstone monument found by N.C. Hoium and Associates

and to perpetuate the location of said corner, at the exact location thereof, a permanent marker was placed consisting of an Isanti County cast iron monument set on top of the sandstone monument

AND on the 9th day of June, 2021, said permanent marker was reset CIM flush after road construction using static GPS methods. The ties were updated.

Updated reference ties are as shown below.



Revision Date

06/09/2021

N.A.D. 1983 Coordinates
(1996 Adjustment)

County Project Coordinates	
Northing	<u>238140.9298</u>
Easting	<u>521362.3756</u>
Date	<u>5/21/02</u>

I hereby certify that this United States public land survey monument record is correct and complete to the best of my knowledge and belief.

David Zieglmeier Date 2/2/23

David Zieglmeier Anoka County Surveyor
Minnesota License Number 46179

HISTORY OF GOVERNMENT CORNER

Page No. 55

County of Anoka

State of Minnesota

Northeast Corner of Sec. 27 Township 34 Range 23

CORNER HISTORY:

April 23, 1959 - Anoka County Highway Department found a triangular sandstone rock with hollowed depression w/iron in hollow of stone. Established ties to monument.

June 28, 1962 - Found sandstone monument down 1'± using highway department ties, Set 1/2" iron pipe on top of monument flush with blacktop road and updated ties.

July 20, 1966 - N.C. Hoium and Associates found iron pipe over sandstone monument, set Isanti County cast iron monument. Updated the ties.

June 20, 1967 - Found Isanti County cast iron monument flush and updated ties.

August 16, 1971 - Replaced Isanti County cast iron monument with Anoka County cast iron monument on top of sandstone monument. Updated ties.

August 7, 1975 - Found cast iron monument and updated ties.

August 15, 1978 - Found cast iron monument and updated ties.

May 26, 1982 - Found cast iron monument and updated ties.

August 1, 1986 - Found cast iron monument and updated ties.

December 28, 1988 - Found cast iron monument and updated ties.

August 4, 1992 - Found cast iron monument and updated ties.

April 22, 1996 - Replaced cast iron monument and updated ties.

August 6, 1997 - Found cast iron monument and updated ties.

May 21, 2002 - Found cast iron monument and updated ties. Established NAD 1983 (1996 adj.) Anoka County project coordinates by static GPS methods.

August 1, 2012 - Found cast iron monument down 0.5'±. Verified position by VRS GPS methods. Updated ties. Raised monument flush with road on 8/3/2012.

April 10, 2018 - Found cast iron monument flush. Verified position by VRS GPS methods. Updated ties.

April 23, 2021 - Set construction ties and verified position by VRS GPS methods prior to road construction. Removed monument.

June 9, 2021 - Reset cast iron monument flush after road construction using static GPS methods. Updated ties.