

CERTIFICATE OF LOCATION OF GOVERNMENT CORNER

County of Anoka

State of Minnesota

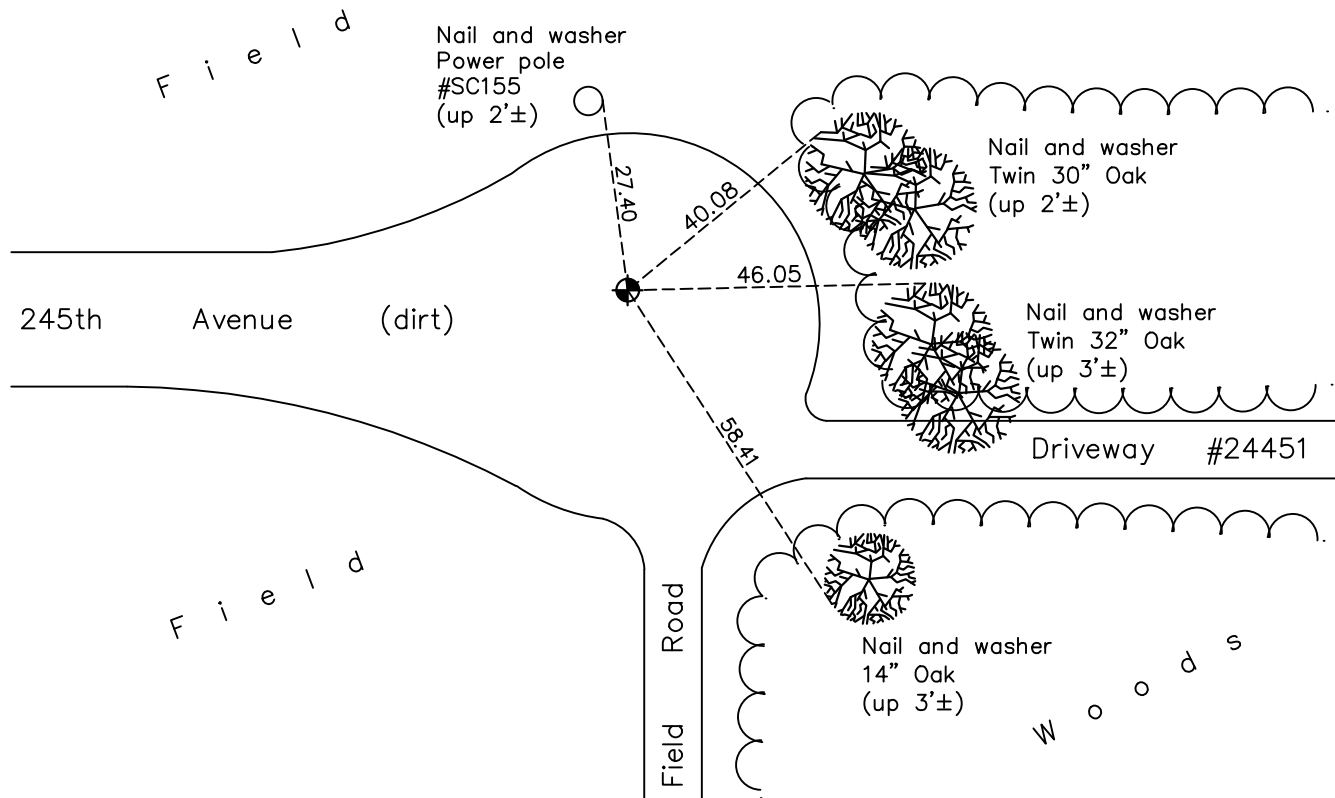
Northwest Corner of Sec. 28 Township 34 Range 23

On the 12th day of October, 1990, the described corner was evidenced by a concrete monument with an iron pipe on the north side

and to perpetuate the location of said corner, at the exact location thereof, a permanent marker was placed consisting of a cast iron monument

AND on the 3rd day of November, 2021, said permanent marker was found down 0.2'± and the ties were updated

Updated reference ties are as shown below.



Revision Date
 01/07/2022

N.A.D. 1983 Coordinates
 (1996 Adjustment)

County Project Coordinates	
Northing	<u>238033.6752</u>
Easting	<u>510743.3627</u>
Date	<u>3/27/03</u>

I hereby certify that this United States public land survey monument record is correct and complete to the best of my knowledge and belief.

David Zieglmeier Date 2/2/23

David M. Zieglmeier, Anoka County Surveyor
 Minnesota License Number 46179

HISTORY OF GOVERNMENT CORNER

Page No. 59

County of Anoka

State of Minnesota

Northwest Corner of Sec. 28 Township 34 Range 23

CORNER HISTORY:

April 15, 1976 - Found concrete monument down 0.5'± and established ties to monument.

August 16, 1978 - Found concrete monument and updated ties.

May 26, 1982 - Found concrete monument and updated ties.

October 12, 1990 - Found concrete monument, replaced with cast iron monument and updated ties.

November 7, 1990 - Found cast iron monument and updated ties.

August 5, 1992 - Found cast iron monument and updated ties.

August 12, 1997 - Found cast iron monument and updated ties.

March 27, 2003 - Established NAD 1983 (1996 adj.) Anoka County project coordinates by static GPS methods.

October 26, 2012 - Found cast iron monument down 0.2'±. Verified position by VRS GPS methods. Updated ties.

April 10, 2018 - Found cast iron monument down 0.2'±. Verified position by VRS GPS methods. Updated ties.

November 3, 2021 - Found cast iron monument down 0.2'±. Verified position by VRS GPS methods. Updated ties.