

CERTIFICATE OF LOCATION OF GOVERNMENT CORNER

County of Anoka

State of Minnesota

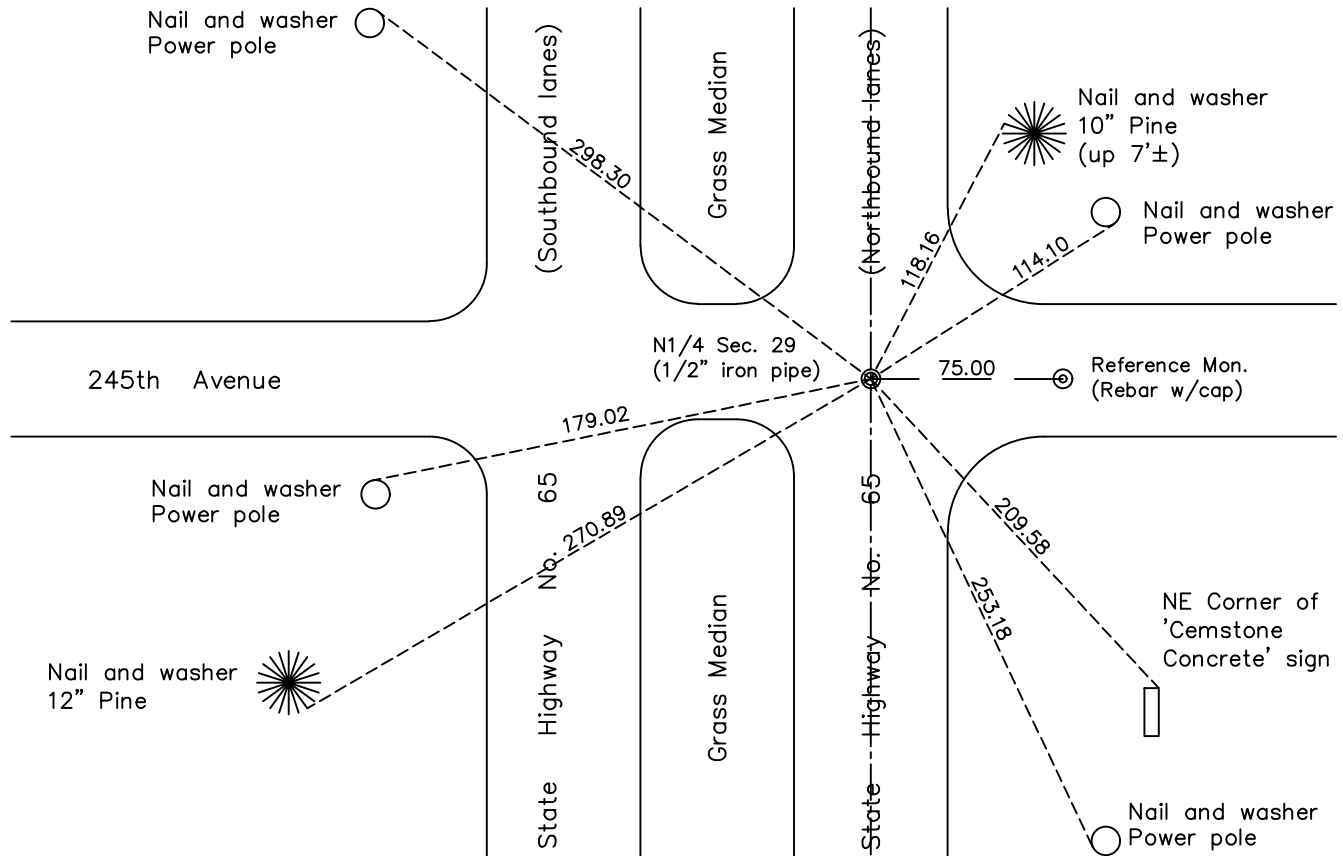
North 1/4 Corner of Sec. 29 Township 34 Range 23

On the 22nd day of September, 2006, the described corner was evidenced by area resurvey

and to perpetuate the location of said corner, at the exact location thereof, a permanent marker was placed consisting of a 1/2" iron pipe with cap

AND on the 8th day of June, 2023, said permanent marker was found to be under the road surface. A reference monument (index #1617) was set 75' easterly and tied out.

Updated reference ties are as shown below.



N.A.D. 1983 Coordinates
(2011 Adjustment)

County Project Coordinates	
Northing	<u>238027.4856</u>
Easting	<u>508095.6808</u>
Date	<u>9/21/2006</u>

Revision Date
6/21/2023

I hereby certify that this United States public land survey monument record is correct and complete to the best of my knowledge and belief.

David Zieglsmeier Date 6/28/23

David M. Zieglsmeier, Anoka County Surveyor
Minnesota License Number 46179

REFERENCE MONUMENT FOR GOVERNMENT CORNER

Reference to County of Anoka State of Minnesota

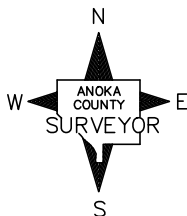
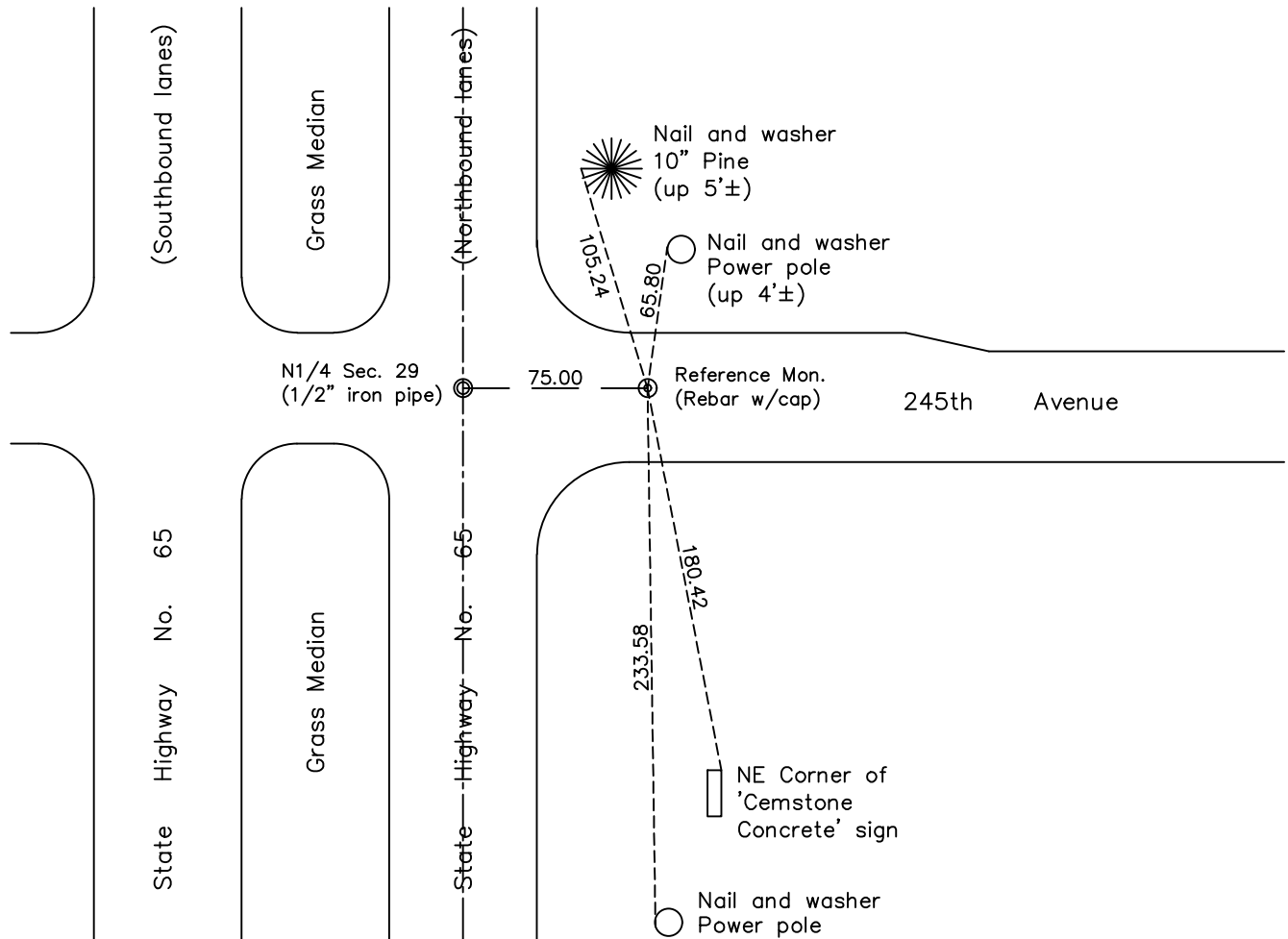
North 1/4 Corner of Sec. 29 Township 34 Range 23

On the 8th day of June, 2023, the described reference monument was evidenced by a computed position 75' easterly along the section line

and to reference the location of said corner, at the exact location thereof, a permanent marker was placed consisting of A 1/2" x 2' rebar with Anoka County aluminum cap and punch mark

AND on the 8th day of June, 2023, said permanent marker was set flush using RTK GPS methods and ties were established to the reference monument

Updated reference ties are as shown below.



Revision Date
6/21/2023

REFERENCE MONUMENT
N.A.D. 1983 (2011 Adj.)

County Project Coordinates	
Northing	<u>238027.6609</u>
Easting	<u>508170.6806</u>
Date	<u>6/8/2023</u>

HISTORY OF GOVERNMENT CORNER

County of Anoka

State of Minnesota

North 1/4 Corner of Sec. 29 Township 34 Range 23

CORNER HISTORY:

May 31, 1960 - P.K. nail set by N.C. Hoium and Associates and established ties to P.K. nail.

August 22, 1967 - Found P.K. nail and updated ties.

August 22, 1969 - Found P.K. nail and established a transit tie to the East by setting two 1/2" iron pipes. Established ties to the 1/2" iron pipes.

August 17, 1971 - Found P.K. nail and 1/2" iron pipes and updated ties.

August 8, 1975 - Found P.K. nail and 1/2" iron pipes and updated ties.

August 17, 1978 - Found P.K. nail and 1/2" iron pipes and updated ties.

June 7, 1982 - Found P.K. nail and 1/2" iron pipes and updated ties.

August 17, 1971 - Found P.K. nail and 1/2" iron pipes and updated ties.

April 14, 1989 - Found brass plug and updated ties.

October 12, 1990 - Set 1/2" iron pipe using area resurvey and updated ties.

September 21, 2006 - Not found, Set a 1/2" iron pipe using area resurvey and updated the ties. Established NAD 1983 (1996 adj.) Anoka County project coordinates by static GPS methods.

June 8, 2023 - Found 1/2" iron pipe government corner to be under the road surface (not uncovered). Set a **reference monument** to a computed position 75' easterly along the section line using RTK GPS methods, consisting of a 1/2" x 2' long rebar with Anoka County aluminum cap and punch mark flush with surface. Established ties to **reference monument**.