

CERTIFICATE OF LOCATION OF GOVERNMENT CORNER

County of Anoka

State of Minnesota

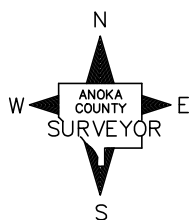
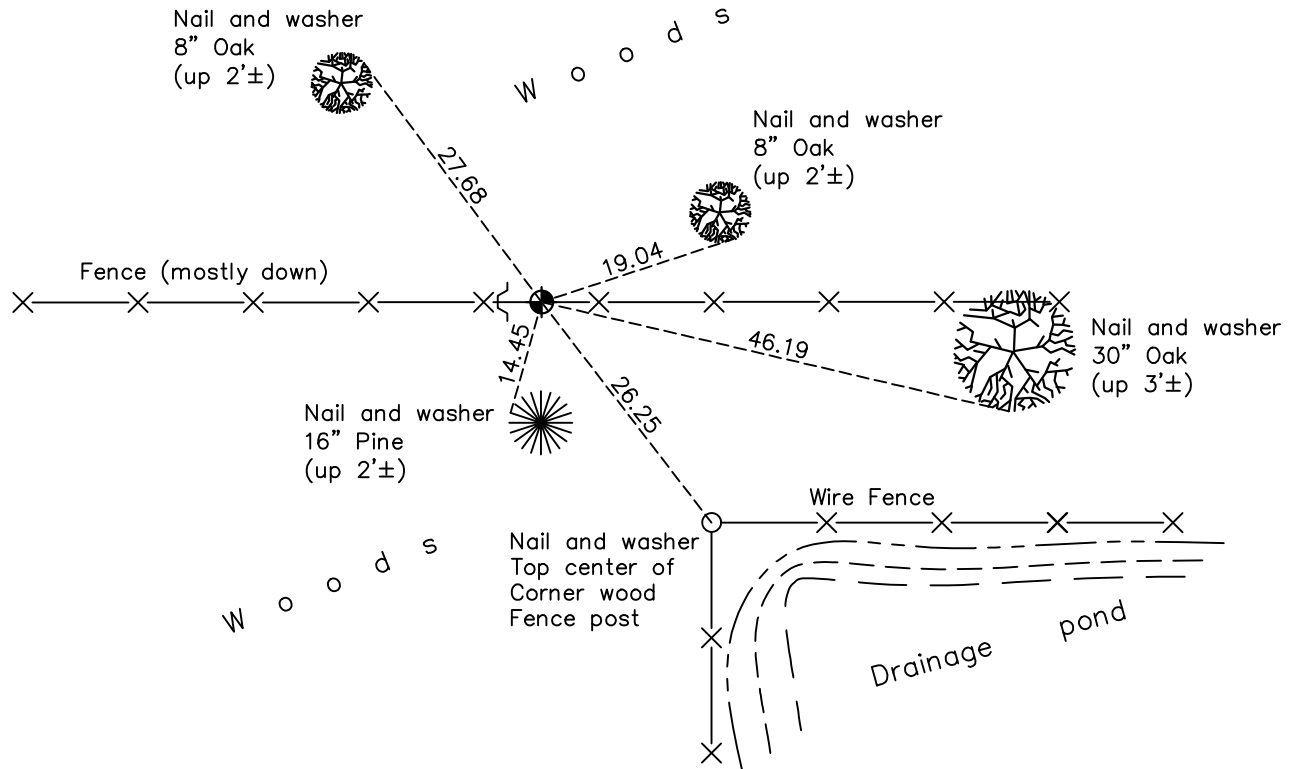
Northeast Corner of Sec. 30 Township 34 Range 23

On the 23rd day of December, 1966, the described corner was evidenced by area resurvey

and to perpetuate the location of said corner, at the exact location thereof, a permanent marker was placed consisting of a cast iron monument (Anoka County C.I.M.)

AND on the 3rd day of November, 2021, said permanent marker was found flush and the ties were updated. Found Isanti County sign and post on the west side.

Updated reference ties are as shown below.



Revision Date

01/10/2022

N.A.D. 1983 Coordinates
(1996 Adjustment)

County Project Coordinates	
Northing	<u>238000.3809</u>
Easting	<u>505437.4101</u>
Date	<u>3/27/03</u>

I hereby certify that this United States public land survey monument record is correct and complete to the best of my knowledge and belief.

David Zieglmeier Date 2/2/23

David M. Zieglmeier, Anoka County Surveyor
Minnesota License Number 46179

HISTORY OF GOVERNMENT CORNER

Page No. 61

County of Anoka

State of Minnesota

Northeast Corner of Sec. 30 Township 34 Range 23

CORNER HISTORY:

December 23, 1966 - Set cast iron monument flush using area resurvey and established ties to monument.

July 12, 1967 - Found cast iron monument and updated ties.

August 23, 1971 - Found cast iron monument and updated ties.

August 12, 1975 - Found cast iron monument and updated ties.

August 16, 1978 - Found cast iron monument and updated ties.

1982 - Found cast iron monument and updated ties.

August 7, 1986 - Found cast iron monument and updated ties.

August 10, 1992 - Found cast iron monument and updated ties.

March 27, 2003 - Established NAD 1983 (1996 adj.) Anoka County project coordinates by static GPS methods.

December 6, 2012 - Found cast iron monument and updated ties.

April 6, 2018 - Found cast iron monument flush. Verified position by VRS GPS methods. Updated ties.

November 3, 2021 - Found cast iron monument flush. Verified position by VRS GPS methods. Updated ties.