

# CERTIFICATE OF LOCATION OF GOVERNMENT CORNER

County of Anoka

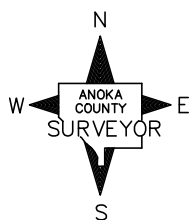
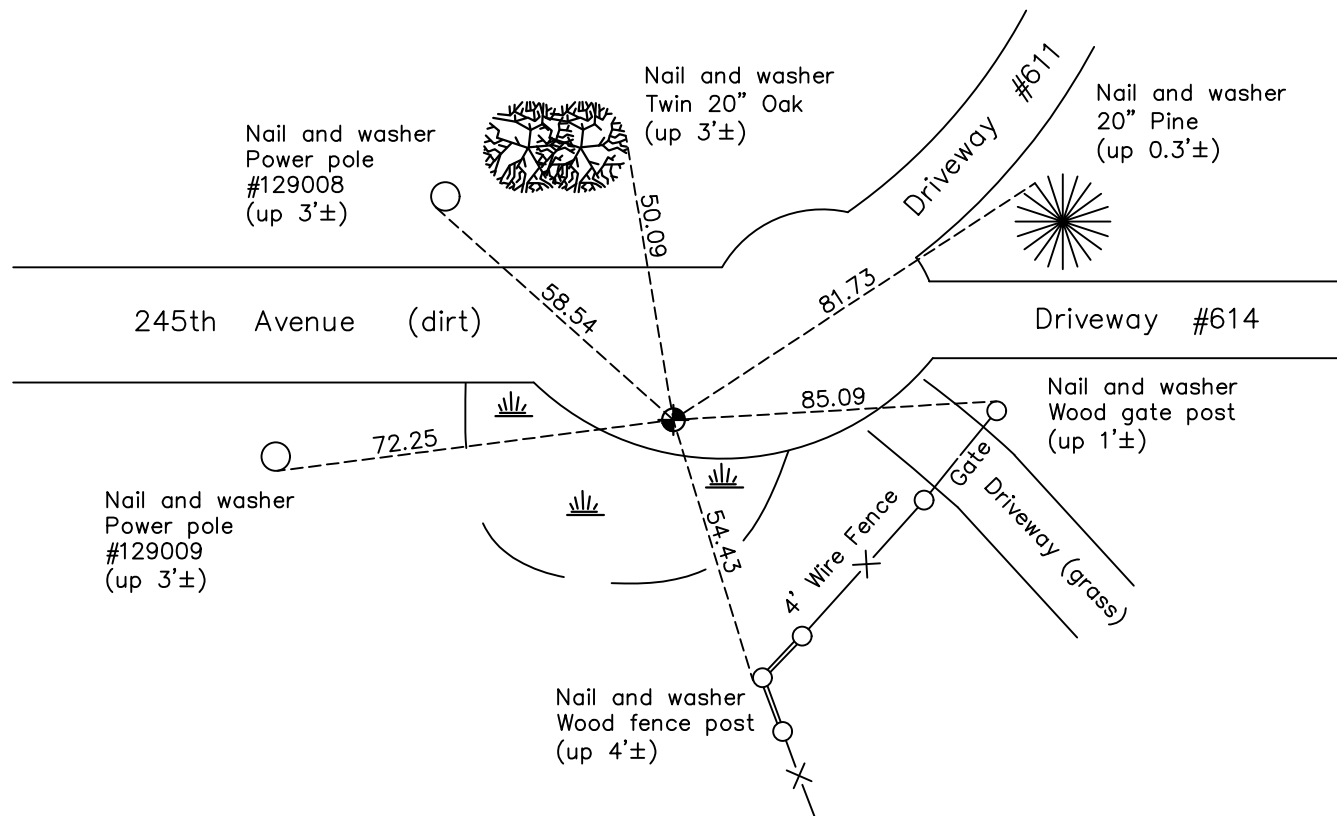
State of Minnesota

## North 1/4 Corner of Sec. 30 Township 34 Range 23

On the 16th day of January, 2013, the described corner was evidenced by red and white iron pipe

and to perpetuate the location of said corner, at the exact location thereof, a permanent marker was placed consisting of a 2" sq. steel telspar mon. w/ 'County Surveyor' cap & punchmark, sign and post on the north side.

AND on the 31st day of May, 2023, said permanent marker was found down 1'± and bent. Removed Telspar and replaced with a solid CIM to published coordinates, updated ties after setting Updated reference ties are as shown below.



Revision Date  
 6/13/2023

N.A.D. 1983 Coordinates  
 (1996 Adjustment)

County Project Coordinates	
Northing	<u>237989.2940</u>
Easting	<u>502784.7652</u>
Date	<u>5/15/02</u>

I hereby certify that this United States public land survey monument record is correct and complete to the best of my knowledge and belief.  
David Zieglmeier Date 6/28/23  
 David Zieglmeier Anoka County Surveyor  
 Minnesota License Number 46179

# HISTORY OF GOVERNMENT CORNER

Page No. 62

County of Anoka

State of Minnesota

## North 1/4 Corner of Sec. 30 Township 34 Range 23

### **CORNER HISTORY:**

December 27, 1966 - Set red and white iron pipe up 3'± using area resurvey and established ties to iron pipe.

July 12, 1967 - Found red and white iron pipe up 3.5'± and updated ties.

August 12, 1975 - Found red and white iron pipe missing, found 3/4" iron pipe and checked corner ties, found ties to be off somewhat.

January 29, 1979 - Reset red and white iron pipe up 3'± using corner ties and updated ties.

June 7, 1982 - Found red and white iron pipe and updated ties.

August 6, 1987 - Found red and white iron pipe and updated ties.

May 10, 1993 - Found red and white iron pipe and updated ties.

May 15, 2002 - Found red and white iron pipe and updated ties. Established NAD 1983 (1996 adj.) Anoka County project coordinates by static GPS methods.

December 6, 2012 - Found red and white iron pipe leaning southwesterly. Checked position by VRS GPS methods and updated corner ties to base of pipe. Monument in need of reset.

January 16, 2013 - Set a 2"x2"x8' steel Telspar monument w/punchmarked 'County Surveyor' cap up 1'± using static GPS methods. Updated ties.

April 6, 2018 - Found 2" square steel Telspar monument w/cap up 1'±. Verified position by VRS GPS methods. Updated ties.

May 31, 2023 - Found Telspar down 1'± and bent over under expanded dirt cul-de-sac. Removed found Telspar and replaced corner position with a new, solid CIM set down 0.5'± using ACS RTK to published coordinates. Updated ties after setting.