

# CERTIFICATE OF LOCATION OF GOVERNMENT CORNER

County of Anoka

State of Minnesota

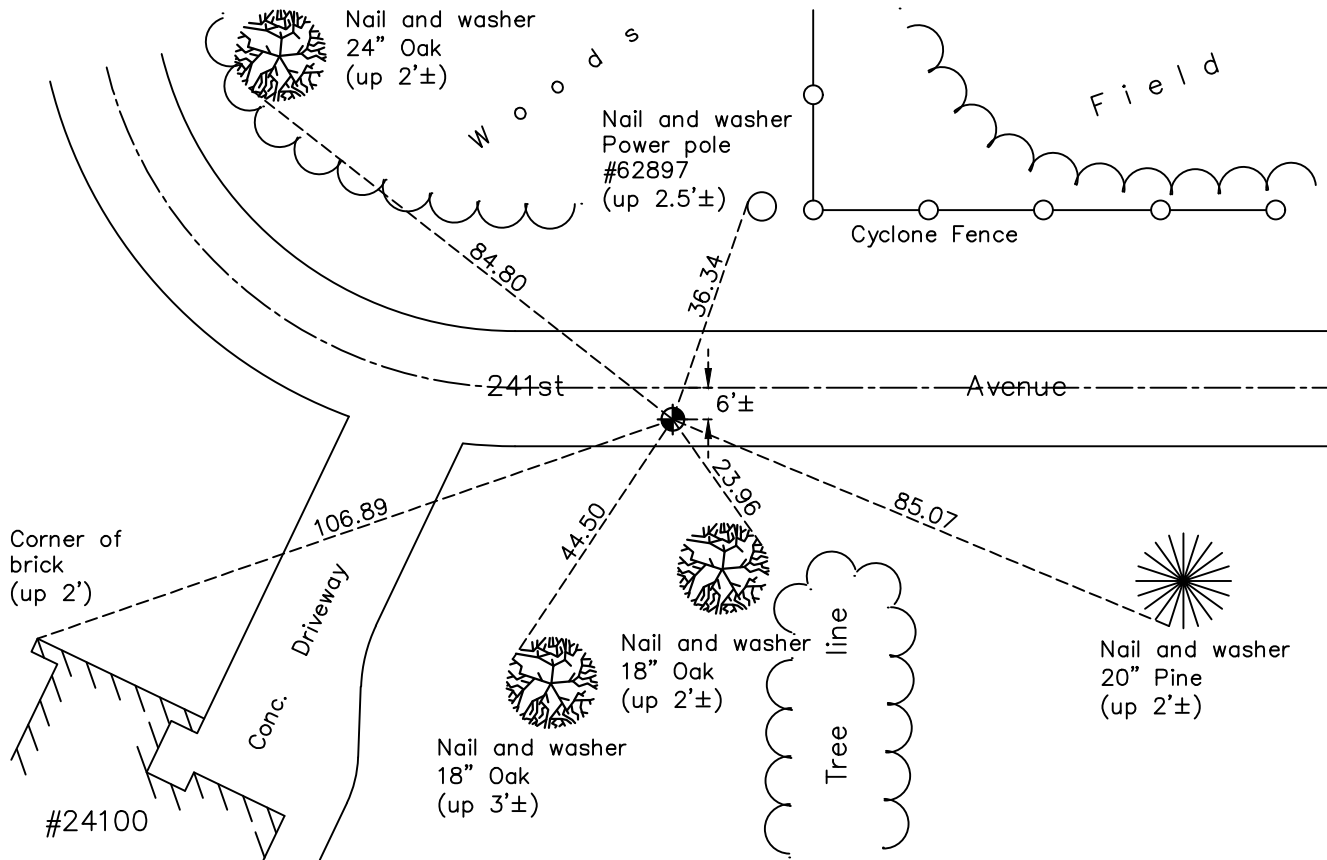
## East 1/4 Corner of Sec. 30 Township 34 Range 23

On the 23rd day of December, 1966, the described corner was evidenced by area resurvey

and to perpetuate the location of said corner, at the exact location thereof, a permanent marker was placed consisting of a cast iron monument

AND on the 3rd day of November, 2021, said permanent marker was found flush and the ties were updated.

Updated reference ties are as shown below.



Revision Date

01/10/2022

N.A.D. 1983 Coordinates  
(1996 Adjustment)

County Project Coordinates	
Northing	<u>235345.2391</u>
Easting	<u>505507.6868</u>
Date	<u>5/15/02</u>

I hereby certify that this United States public land survey monument record is correct and complete to the best of my knowledge and belief.

*David Zieglermeier* Date 2/2/23

David M. Zieglermeier, Anoka County Surveyor  
Minnesota License Number 46179

# HISTORY OF GOVERNMENT CORNER

Page No. 65

County of Anoka

State of Minnesota

## East 1/4 Corner of Sec. 30 Township 34 Range 23

### **CORNER HISTORY:**

December 23, 1966 - Set cast iron monument flush using area resurvey and established ties to monument.

July 12, 1967 - Found cast iron monument and updated ties.

August 23, 1971 - Found cast iron monument and updated ties.

August 11, 1975 - Found cast iron monument and updated ties.

August 17, 1978 - Found cast iron monument and updated ties.

May 28, 1982 - Found cast iron monument and updated ties.

August 6, 1986 - Found cast iron monument and updated ties.

August 5, 1992 - Found cast iron monument and updated ties.

May 15, 2002 - Found cast iron monument, established NAD 1983 (1996 adj.) Anoka County project coordinates by static GPS methods and updated ties.

December 6, 2012 - Found cast iron monument down 0.3'± and broken, checked corner tie distances and position by VRS GPS methods to center fin.

May 29, 2013 - Set cast iron monument flush. Verified position by VRS GPS methods. Updated ties.

April 9, 2018 - Found cast iron monument flush. Verified position by VRS GPS methods. Updated ties.

November 3, 2021 - Found cast iron monument flush. Verified position by VRS GPS methods. Updated ties.