

CERTIFICATE OF LOCATION OF GOVERNMENT CORNER

County of Anoka

State of Minnesota

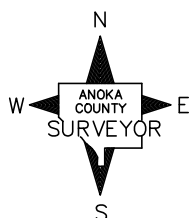
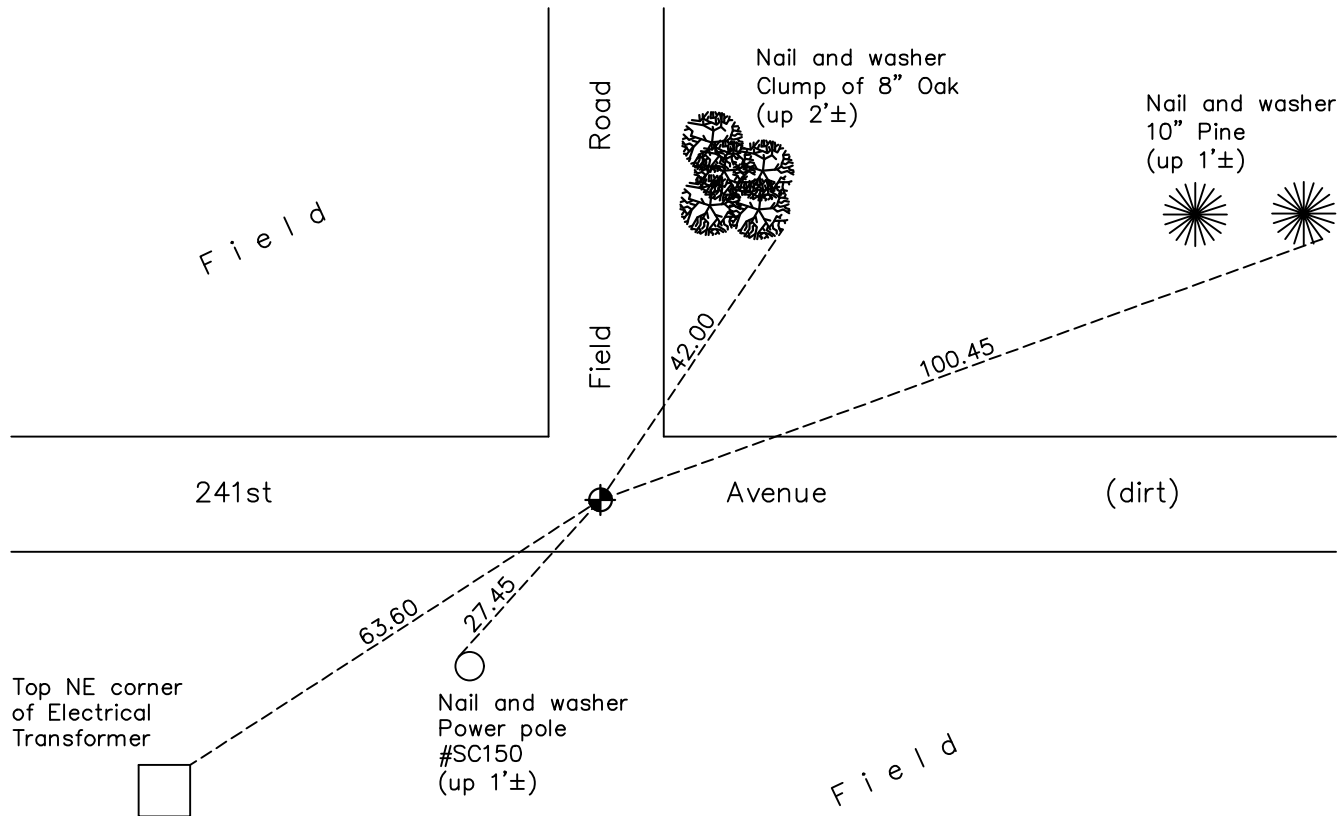
East 1/4 Corner of Sec. 29 Township 34 Range 23

On the 8th day of December, 1976, the described corner was evidenced by area resurvey

and to perpetuate the location of said corner, at the exact location thereof, a permanent marker was placed consisting of a cast iron monument down 0.2'±

AND on the 4th day of November, 2021, said permanent marker was found new cast iron monument down 0.2'± and updated ties.

Updated reference ties are as shown below.



Revision Date
 01/10/2022

N.A.D. 1983 Coordinates
 (1996 Adjustment)

County Project Coordinates	
Northing	<u>235399.2289</u>
Easting	<u>510800.5155</u>
Date	<u>5/15/02</u>

I hereby certify that this United States public land survey monument record is correct and complete to the best of my knowledge and belief.

_____ Date _____

David M. Zieglmeier, Anoka County Surveyor
 Minnesota License Number 46179

HISTORY OF GOVERNMENT CORNER

Page No. 66

County of Anoka

State of Minnesota

East 1/4 Corner of Sec. 29 Township 34 Range 23

CORNER HISTORY:

December 8, 1976 - Set cast iron monument down 0.5'± using area resurvey and established ties to monument.

April 12, 1978 - Reset cast iron monument to new location and down 1'±. updated ties.

August 18, 1978 - Found cast iron monument and updated ties.

May 26, 1982 - Found cast iron monument and updated ties.

August 6, 1986 - Found cast iron monument and updated ties.

August 5, 1992 - Found cast iron monument and updated ties.

August 7, 1997 - Found cast iron monument and updated ties.

May 15, 2002 - Found cast iron monument down 2'± and updated ties. Established NAD 1983 (1996 adj.) Anoka County project coordinates by static GPS methods.

October 29, 2012 - Found cast iron monument down 2'± and updated ties.

April 10, 2013 - Set full cast iron monument (down 0.5'±) on top of full cast iron monument below.

June 18, 2018 - Found cast iron monument down 0.1'±. Verified position by VRS GPS methods. Updated ties.

November 4th, 2021 - Found cast iron monument down 0.2'±. Verified position by VRS GPS methods. Updated ties.