

CERTIFICATE OF LOCATION OF GOVERNMENT CORNER

County of Anoka

State of Minnesota

East 1/4 Corner of Sec. 28 Township 34 Range 23

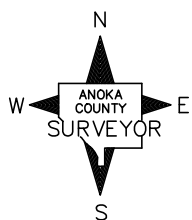
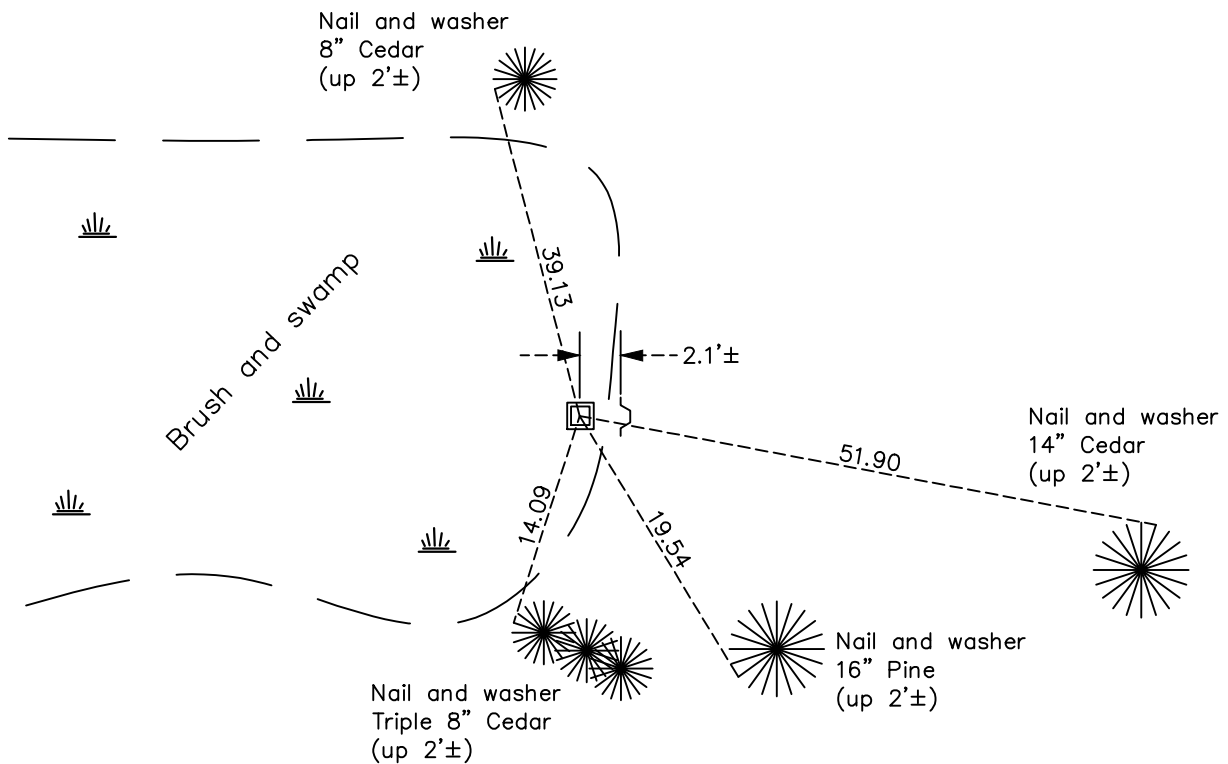
On the 9th day of January, 2013, the described corner was evidenced by section resurvey provided by E.G. Rud and Sons and found property corners in Section 28

and to perpetuate the location of said corner, at the exact location thereof, a permanent marker was placed consisting of a 10' red and white 2" square steel Telspar monument with a 'County Surveyor' cap and punchmark set up 1.5'±.

AND on the 29th day of March, 2023, said permanent marker was found as described.

Verified position to published coordinates and compared ties to historical. Sign & Post 2.1'± to East.

Updated reference ties are as shown below.



Revision Date

4/07/2023

N.A.D. 1983 Coordinates
(1996 Adjustment)

County Project Coordinates	
Northing	<u>235622.9263</u>
Easting	<u>516083.7454</u>
Date	<u>1/09/13</u>

I hereby certify that this United States public land survey monument record is correct and complete to the best of my knowledge and belief.

David Zieglmeier Date 6/28/23

David M. Zieglmeier, Anoka County Surveyor
Minnesota License Number 46179

HISTORY OF GOVERNMENT CORNER

Page No. 67

County of Anoka

State of Minnesota

East 1/4 Corner of Sec. 28 Township 34 Range 23

CORNER HISTORY:

January 9, 2013 – Set 10' long 2" square steel Telspar monument with a 'County Surveyor' cap and punchmark in swamp. Monument is 1.5'± above surface and a sign and post was set 2.1'± east of the monument. The position of the East 1/4 corner was determined using the West 1/4 corner of Section 28 and a computed position for the Center of Section 28 provided by E.G. Rud and Sons. The position of the Center was evidenced by a found 1/2" iron pipe with LS#12251 cap (E.G.Rud) and found property corners in Section 28. The line between the West 1/4 corner and the computed Center was extended easterly to the intersection with a straight line between the Northeast and Southeast corners of Section 28. Established NAD 1983 (1996 Adjustment) Anoka County Project Coordinates for the East 1/4 corner and verified position of monument set by Static GPS methods. Established ties to monument.

November 17, 2021 – 10' red and white 2" square steel Telspar monument with a 'County Surveyor' cap and punchmark set up 1.5'±. A sign and post was set 2.1'± east of monument. Verified position by VRS GPS methods, Ties Updated

March 29, 2023 – Found Telspar up 1.5'± with cap and punch mark. Verified position to published coordinates using ACS RTK GPS method and compared ties to historical.