

# CERTIFICATE OF LOCATION OF GOVERNMENT CORNER

County of Anoka

State of Minnesota

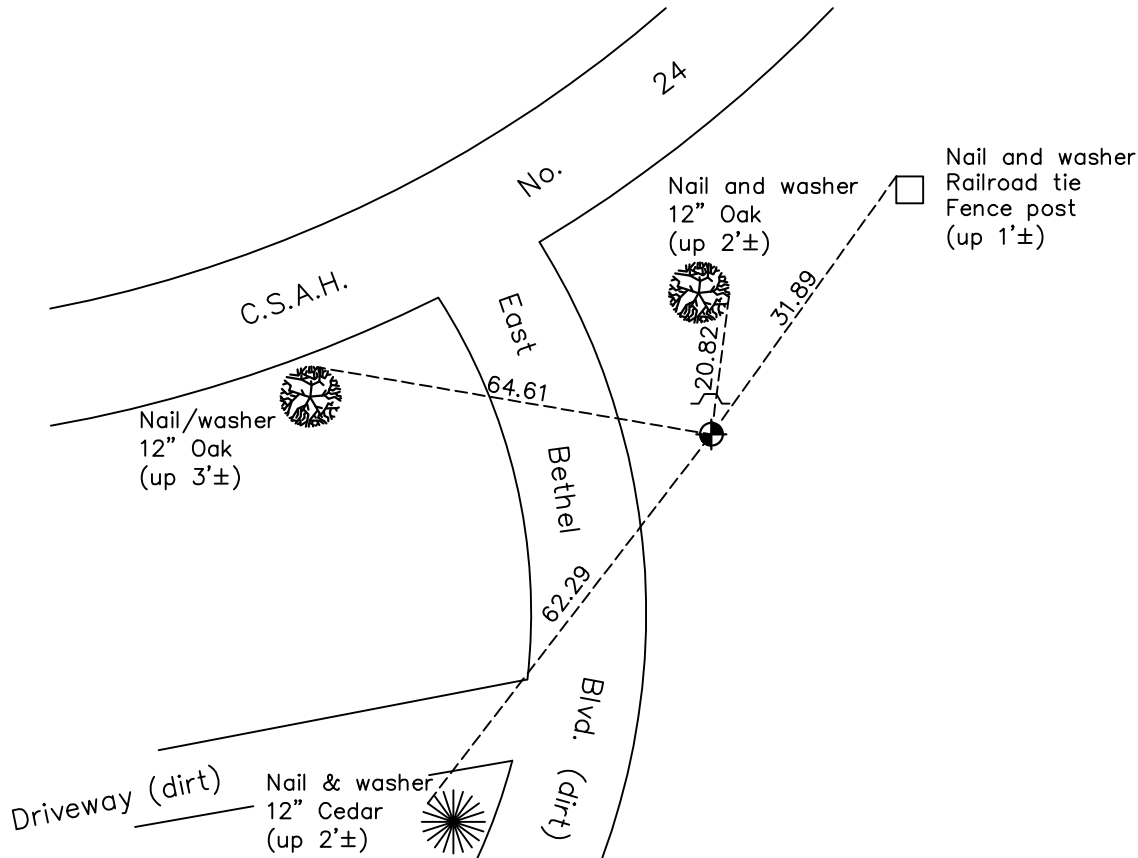
## East 1/4 Corner of Sec. 27 Township 34 Range 23

On the 16th day of December, 1976, the described corner was evidenced by area resurvey

and to perpetuate the location of said corner, at the exact location thereof, a permanent marker was placed consisting of a cast iron monument with a sign and post on the north side

AND on the 2nd day of November, 2021, said permanent marker was found down 0.2'± and the ties were updated

Updated reference ties are as shown below.



Revision Date  
01/10/2022

N.A.D. 1983 Coordinates  
(1996 Adjustment)

County Project Coordinates	
Northing	<u>235487.8459</u>
Easting	<u>521398.9857</u>
Date	<u>5/21/02</u>

I hereby certify that this United States public land survey monument record is correct and complete to the best of my knowledge and belief.

*David Zieglsmeier* Date 2/2/23

David M. Zieglsmeier, Anoka County Surveyor  
Minnesota License Number 46179

# HISTORY OF GOVERNMENT CORNER

Page No. 68

County of Anoka

State of Minnesota

East 1/4 Corner of Sec. 27 Township 34 Range 23

## **CORNER HISTORY:**

December 16, 1976 - Set cast iron monument flush using area resurvey and established ties to monument.

August 18, 1978 - Found cast iron monument and updated ties.

May 27, 1982 - Found cast iron monument and updated ties.

August 1, 1986 - Found cast iron monument and updated ties.

August 4, 1992 - Found cast iron monument and updated ties.

August 4, 1997 - Found cast iron monument and updated ties.

May 21, 2002 - Found cast iron monument and updated ties. Established NAD 1983 (1996 adj.) Anoka County project coordinates by static GPS methods.

August 1, 2012 - Found cast iron monument down 0.2'±. Verified position by VRS GPS methods. Updated ties.

April 4, 2018 - Found cast iron monument down 0.2'±. Verified position by VRS GPS methods. Updated ties.

November 2, 2021 - Found cast iron monument down 0.2'±. Verified position by VRS GPS methods. Updated ties.