

CERTIFICATE OF LOCATION OF GOVERNMENT CORNER

County of Anoka

State of Minnesota

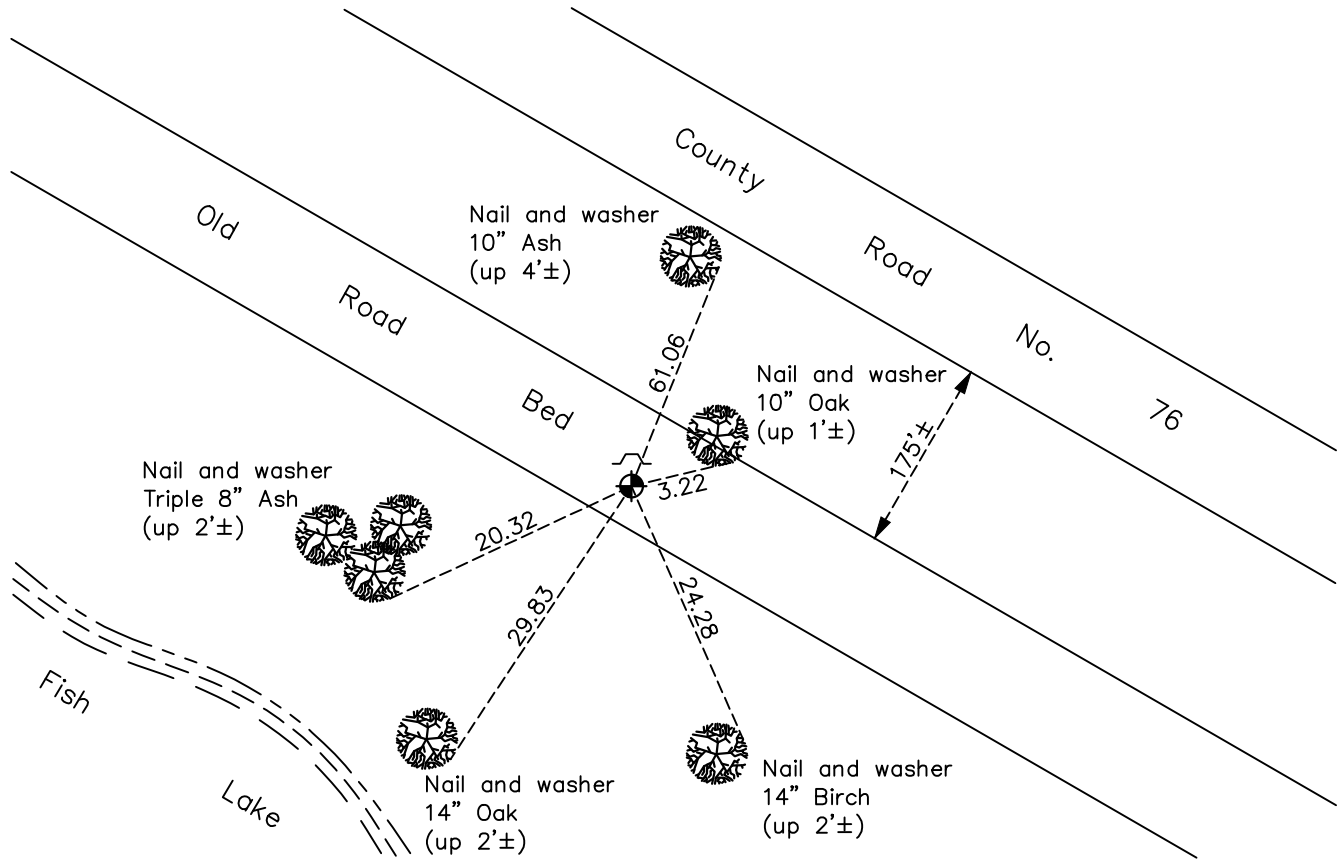
Meander Corner of Sec. 25 Township 34 Range 23 (on south line of NW 1/4)

On the 8th day of August, 1975, the described corner was evidenced by a 1 1/2" iron pipe by N.C. Hoium

and to perpetuate the location of said corner, at the exact location thereof, a permanent marker was placed consisting of a cast iron monument with a sign and post on the north side

AND on the 6th day of March, 2023, said permanent marker was found down 0.1'± and the Coodinates were verified by County RTK GPS method

Updated reference ties are as shown below.



N.A.D. 1983 Coordinates
(1996 Adjustment)

County Project Coordinates	
Northing	<u>235481.1290</u>
Easting	<u>527535.9661</u>
Date	<u>5/22/02</u>

I hereby certify that this United States public land survey monument record is correct and complete to the best of my knowledge and belief.

David Zieglmeier Date 12/11/23

David M. Zieglmeier, Anoka County Surveyor
Minnesota License Number 46179

Revision Date
3/27/2023

HISTORY OF GOVERNMENT CORNER

Page No. 69

County of Anoka

State of Minnesota

Meander Corner of Sec. 25 Township 34 Range 23 (on south line of NW 1/4)

CORNER HISTORY:

April 23, 1965 - Found 1 1/2" iron pipe flush and updated ties prior to road construction.

August 8, 1975 - Set cast iron monument flush using corner ties and updated ties.

August 18, 1978 - Found cast iron monument and updated ties.

June 7, 1982 - Found cast iron monument and updated ties.

August 6, 1986 - Found cast iron monument and updated ties.

August 10, 1992 - Found cast iron monument and updated ties.

May 22, 2002 - Found cast iron monument and updated ties. Established NAD 1983 (1996 adj.) Anoka County project coordinates.

April 25, 2012 - Found cast iron monument down 0.2'± and updated ties.

April 4, 2018 - Found cast iron monument down 0.2'± and updated ties.

November 5, 2021 - Found cast iron monument down 0.2'± Verified position by VRS GPS methods and updated ties.

March 6, 2023 - Found cast iron monument down 0.1'± and the position verified by County RTK GPS method.