

# CERTIFICATE OF LOCATION OF GOVERNMENT CORNER

County of Anoka

State of Minnesota

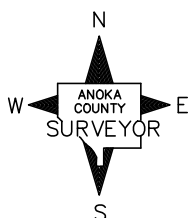
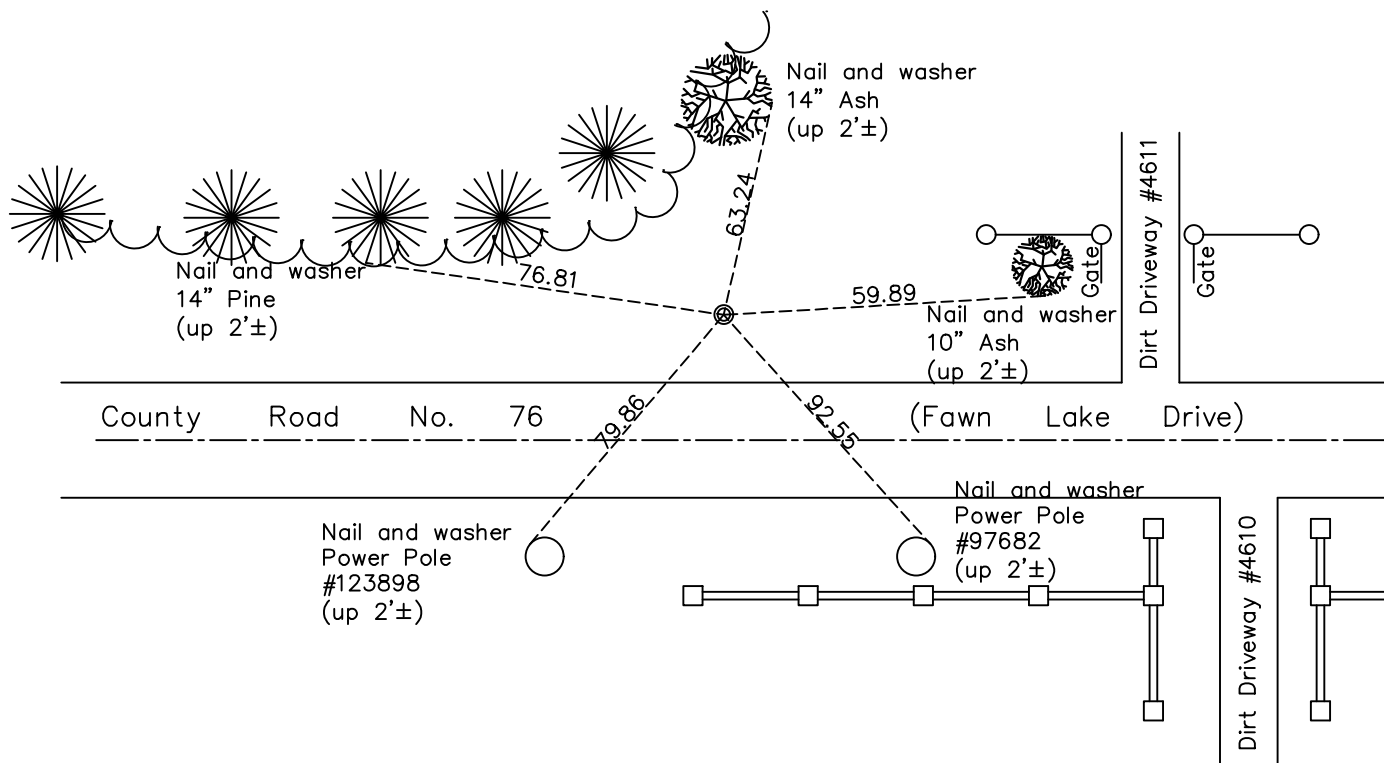
Center Corner of Sec. 25 Township 34 Range 23

On the 22nd day of March, 1966, the described corner was evidenced by a 1 1/4" Iron Pipe

and to perpetuate the location of said corner, at the exact location thereof, a permanent marker was placed consisting of an open 1/2" Iron Pipe (set date unknown)

AND on the 3rd day of October, 2024, said permanent marker was found 1/2" Open Iron Pipe down 0.3'±. Established ties with RTK GPS and established ties.

Updated reference ties are as shown below.



Revision Date

11/5/2024

N.A.D. 1983 Coordinates  
(1996 Adjustment)

County Project Coordinates

Northing 235451.184Easting 529317.686Date 10/03/2024

I hereby certify that this United States public land survey monument record is correct and complete to the best of my knowledge and belief.

David Zieglmeier Date 11/7/24

David M. Zieglmeier, Anoka County Surveyor  
Minnesota License Number 46179

# HISTORY OF GOVERNMENT CORNER

Page No. 70

County of Anoka

State of Minnesota

Center Corner of Sec. 25 Township 34 Range 23

## **CORNER HISTORY:**

March 22, 1966 - Found 1 1/4" Iron Pipe and set 1/2" Iron Pipes 100' to North and 100' to South.

August 8, 1975 - 1 1/4" Iron pipe noted as not found. Found 1/2" solid rods ties to north and south.

8/27/81, 8/6/86 - Located 1 1/4" Iron pipe and checked ties.

October 3, 2024 - Found 1/2" open Iron Pipe down 0.3'±, established coordinates using RTK GPS and established ties. Previous iron pipe to north not found and previous pipe to south found bent.