

CERTIFICATE OF LOCATION OF GOVERNMENT CORNER

County of Anoka

State of Minnesota

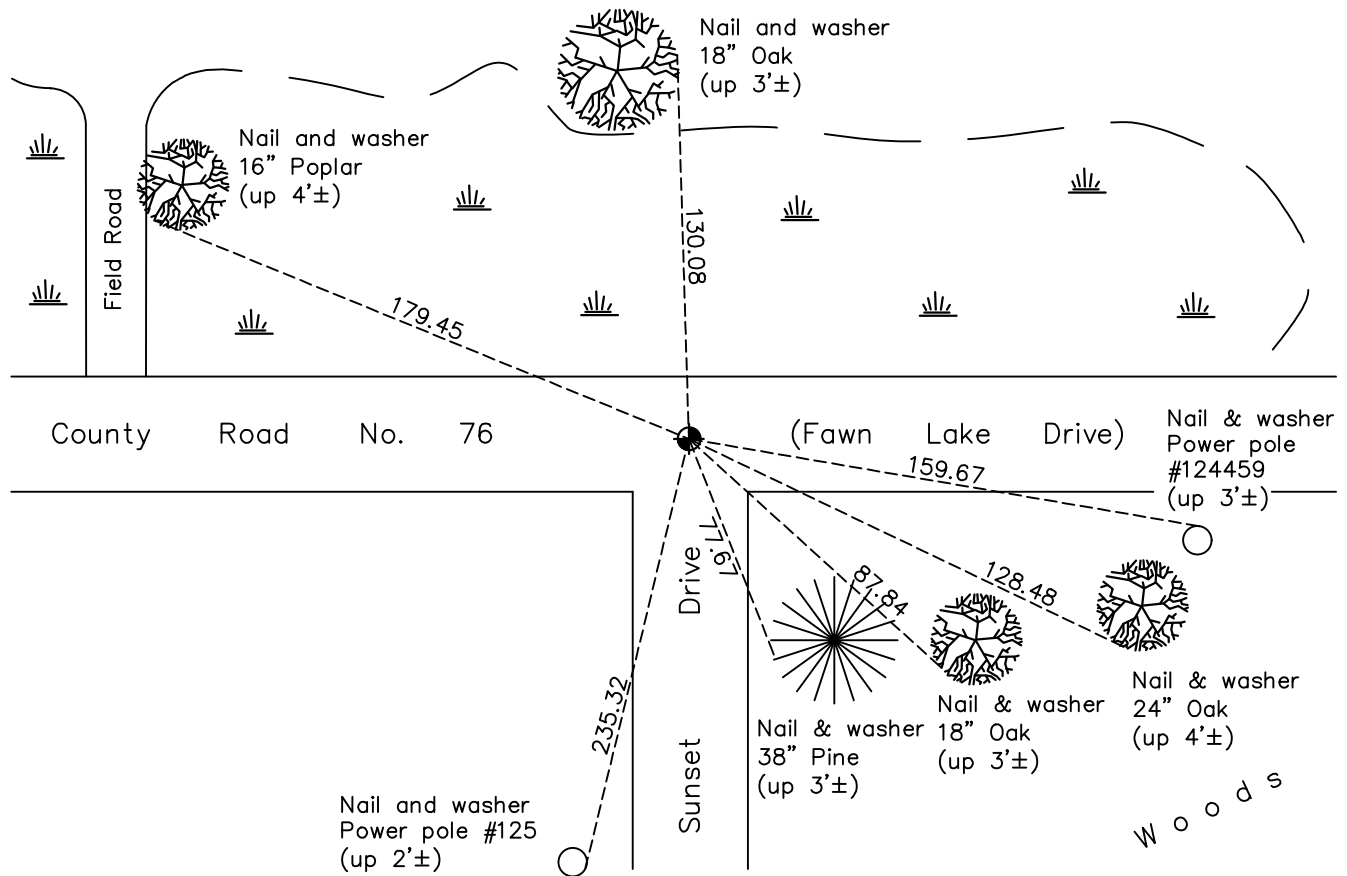
East 1/4 Corner of Sec. 25 Township 34 Range 23

On the 5th day of August, 1968, the described corner was evidenced by a 1 1/2" iron pipe

and to perpetuate the location of said corner, at the exact location thereof, a permanent marker was placed consisting of a cast iron monument

AND on the 19th day of May, 2023, said permanent marker was reset cast iron monument, set flush, after road construction using ACS RTK GPS method. Verified w/ historic ties & updated.

Updated reference ties are as shown below.



Revision Date
5/31/2023

N.A.D. 1983 Coordinates
(1996 Adjustment)

County Project Coordinates	
Northing	<u>235406.5953</u>
Easting	<u>531974.0032</u>
Date	<u>5/22/02</u>

I hereby certify that this United States public land survey monument record is correct and complete to the best of my knowledge and belief.

David Zieglmeier Date 12/11/23

David M. Zieglmeier, Anoka County Surveyor
Minnesota License Number 46179

HISTORY OF GOVERNMENT CORNER

Page No. 71

County of Anoka

State of Minnesota

East 1/4 Corner of Sec. 25 Township 34 Range 23

CORNER HISTORY:

July 23, 1962 - Found 1 1/2" iron pipe up 0.3' and established ties to iron pipe.

August 5, 1968 - Found 1 1/2" iron pipe and replaced with cast iron monument flush. Updated ties.

8/16/71, 8/8/75, 8/18/78 - Found cast iron monument and updated ties.

October 3, 1979 - Raised cast iron monument.

8/27/81, 8/1/86, 8/5/92, 8/11/97 - Found cast iron monument and updated ties.

May 22, 2002 - Found cast iron monument and updated ties. Established NAD 1983 (1996 adj.) Anoka County project coordinates by static GPS methods.

August 1, 2012 - Found cast iron monument broken checked position by VRS GPS methods and corner ties.

May 29, 2013 - Set cast iron monument using static GPS methods and updated ties.

4/2/18, 11/10/21 - Found cast iron monument flush. Verified position by VRS GPS methods. Updated ties.

May 19, 2023 - Reset cast iron monument, set flush, after road construction using ACS RTK GPS method. Verified position with historic ties and updated ties after setting. Job no. 22-131