

CERTIFICATE OF LOCATION OF GOVERNMENT CORNER

County of Anoka

State of Minnesota

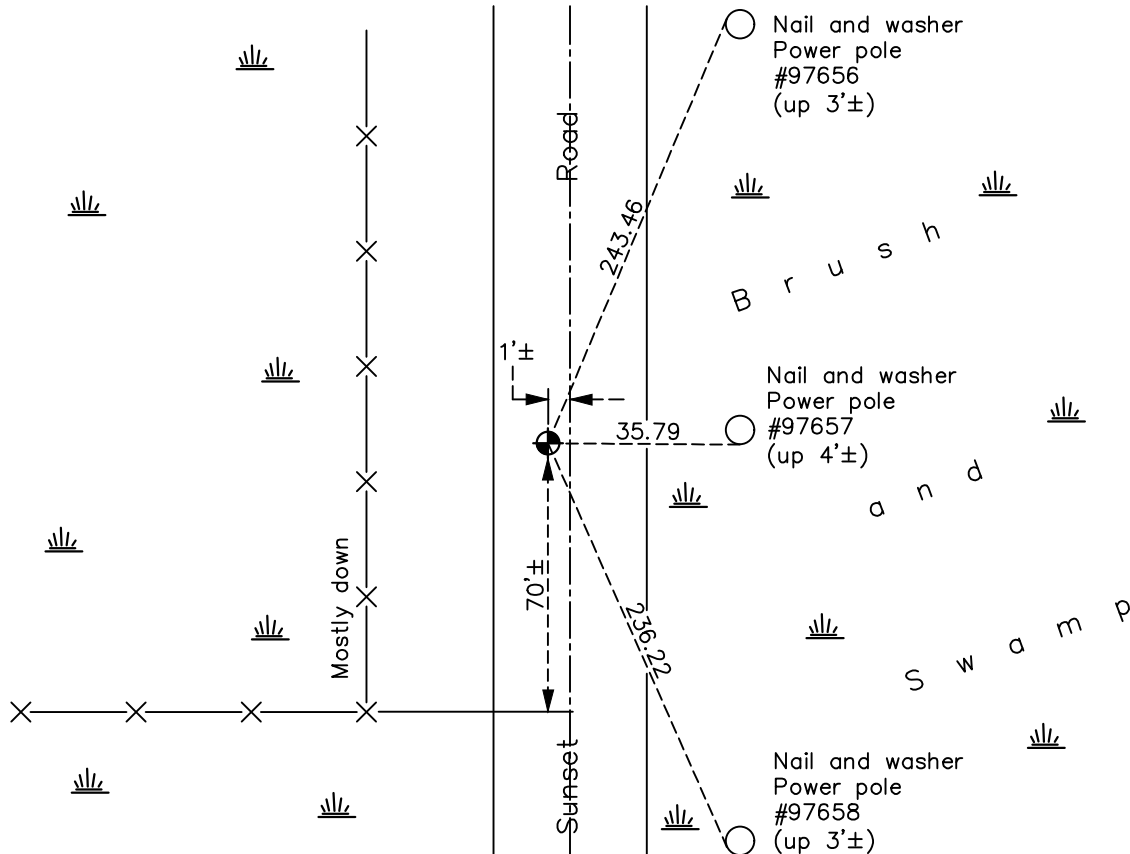
Southeast Corner of Sec. 25 Township 34 Range 23

On the 2nd day of May, 1975, the described corner was evidenced by a 1" iron pipe set by N.C. Hoium

and to perpetuate the location of said corner, at the exact location thereof, a permanent marker was placed consisting of a cast iron monument

AND on the 5th day of November, 2021, said permanent marker was found flush and the ties were updated

Updated reference ties are as shown below.



Revision Date
 01/10/2022

N.A.D. 1983 Coordinates
 (1996 Adjustment)

County Project Coordinates	
Northing	<u>232767.0941</u>
Easting	<u>531985.1914</u>
Date	<u>5/22/02</u>

I hereby certify that this United States public land survey monument record is correct and complete to the best of my knowledge and belief.

David Zieglermeier Date 2/2/23

David M. Zieglermeier, Anoka County Surveyor
 Minnesota License Number 46179

HISTORY OF GOVERNMENT CORNER

Page No. 72

County of Anoka

State of Minnesota

Southeast Corner of Sec. 25 Township 34 Range 23

CORNER HISTORY:

August 2, 1968 - Found 1" iron pipe down 0.5'± leaning north-northwest and updated ties.

May 2, 1975 - Found 1" iron pipe set by N.C. Hoium and replaced with a cast iron monument down 0.5'± and updated ties.

August 18, 1978 - Found cast iron monument and updated ties.

June 2, 1982 - Found cast iron monument and updated ties.

September 23, 1993 - Found cast iron monument and set construction tie prior to road construction

October 28, 1993 - Set cast iron monument after construction and updated ties.

June 2, 1997 - Replaced cast iron monument, moved to original position and updated ties.

August 11, 1997 - Found cast iron monument and updated ties.

May 22, 2002 - Found cast iron monument and updated ties. Established NAD 1983 (1996 adj.) Anoka County project coordinates by static GPS methods.

April 27, 2012 - Found cast iron monument. Verified position by VRS GPS methods. Updated ties.

April 2, 2018 - Found cast iron monument. Verified position by VRS GPS methods. Updated ties.

November 5, 2021 - Found cast iron monument, flush to surface. Verified position by VRS GPS methods. Updated ties.