

CERTIFICATE OF LOCATION OF GOVERNMENT CORNER

County of Anoka

State of Minnesota

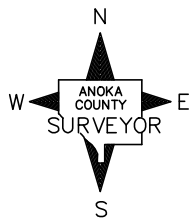
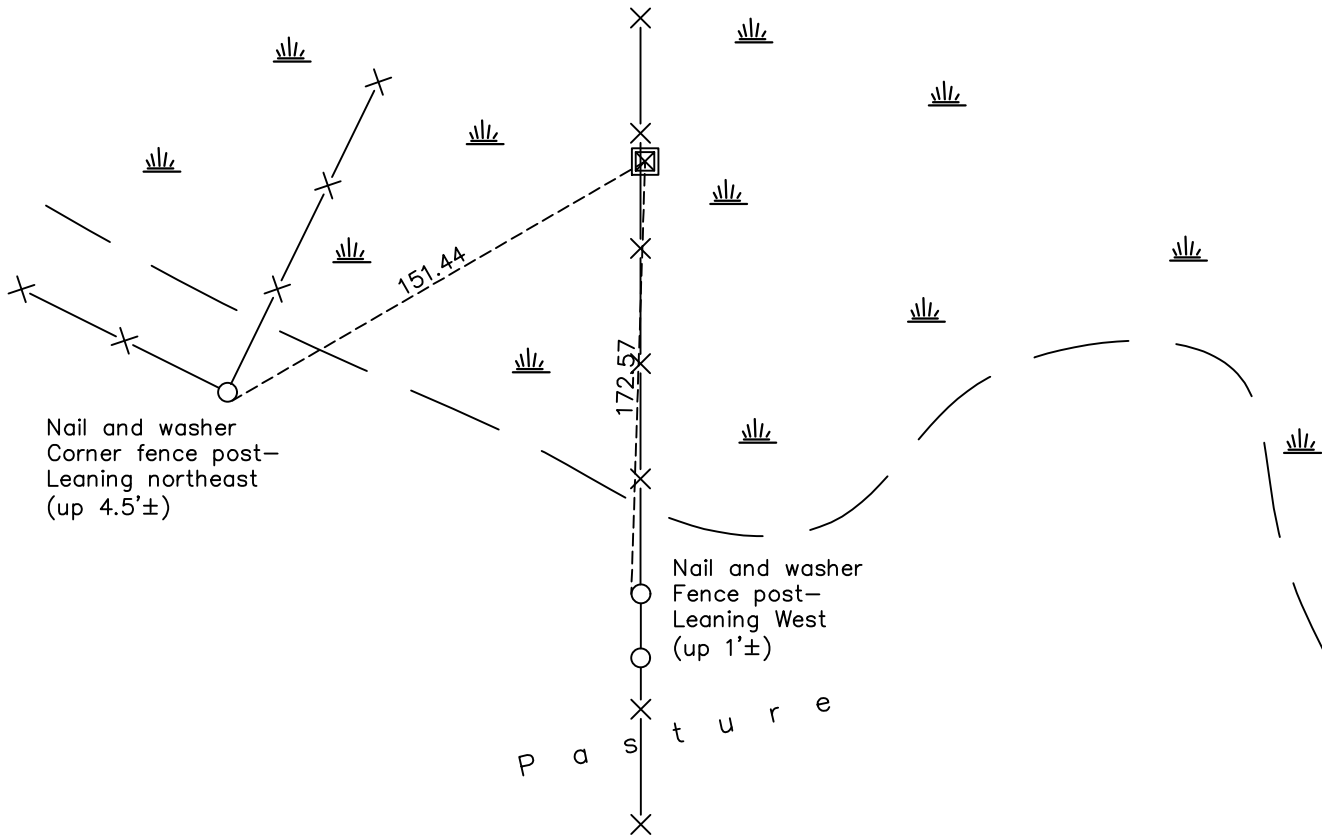
North 1/4 Corner of Sec. 36 Township 34 Range 23

On the 26th day of November, 1997, the described corner was evidenced by a 6' swamp iron

and to perpetuate the location of said corner, at the exact location thereof, a permanent marker was placed consisting of a red and white 2" square steel Telspar monument, up 2.5'±, with a 'County Surveyor' cap and a sign attached facing south

AND on the 7th day of March, 2022, said permanent marker was found up 3.0'± leaning slightly to the east. Ties not able to be updated.

Updated reference ties are as shown below.



Revision Date
3/ 30/ 2022

N.A.D. 1983 Coordinates
 (1996 Adjustment)

County Project Coordinates	
Northing	<u>232816.2042</u>
Easting	<u>529321.2646</u>
Date	<u>4/07/03</u>

I hereby certify that this United States public land survey monument record is correct and complete to the best of my knowledge and belief.
David Zieglmeier Date 2/2/23
 David Zieglmeier Anoka County Surveyor
 Minnesota License Number 46179

HISTORY OF GOVERNMENT CORNER

Page No. 73

County of Anoka

State of Minnesota

North 1/4 Corner of Sec. 36 Township 34 Range 23

CORNER HISTORY:

Date:

October 25, 1973 - Set 6' swamp iron and established ties

June 9, 1982 - Found swamp iron and updated ties

November 26, 1997 - Found 6' swamp iron and replaced with red and white iron pipe with sign & cap up 2.5±. Updated ties.

December 26, 2012 - Found red and white iron pipe with a sign & cap up 2.5'± and updated the ties.

March 7, 2022 - Found 2" square steel Telspar monument , up 3.0'±, verified position by VRS GPS method and the ties were updated.