

CERTIFICATE OF LOCATION OF GOVERNMENT CORNER

County of Anoka

State of Minnesota

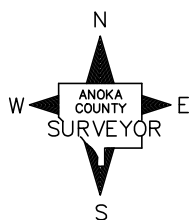
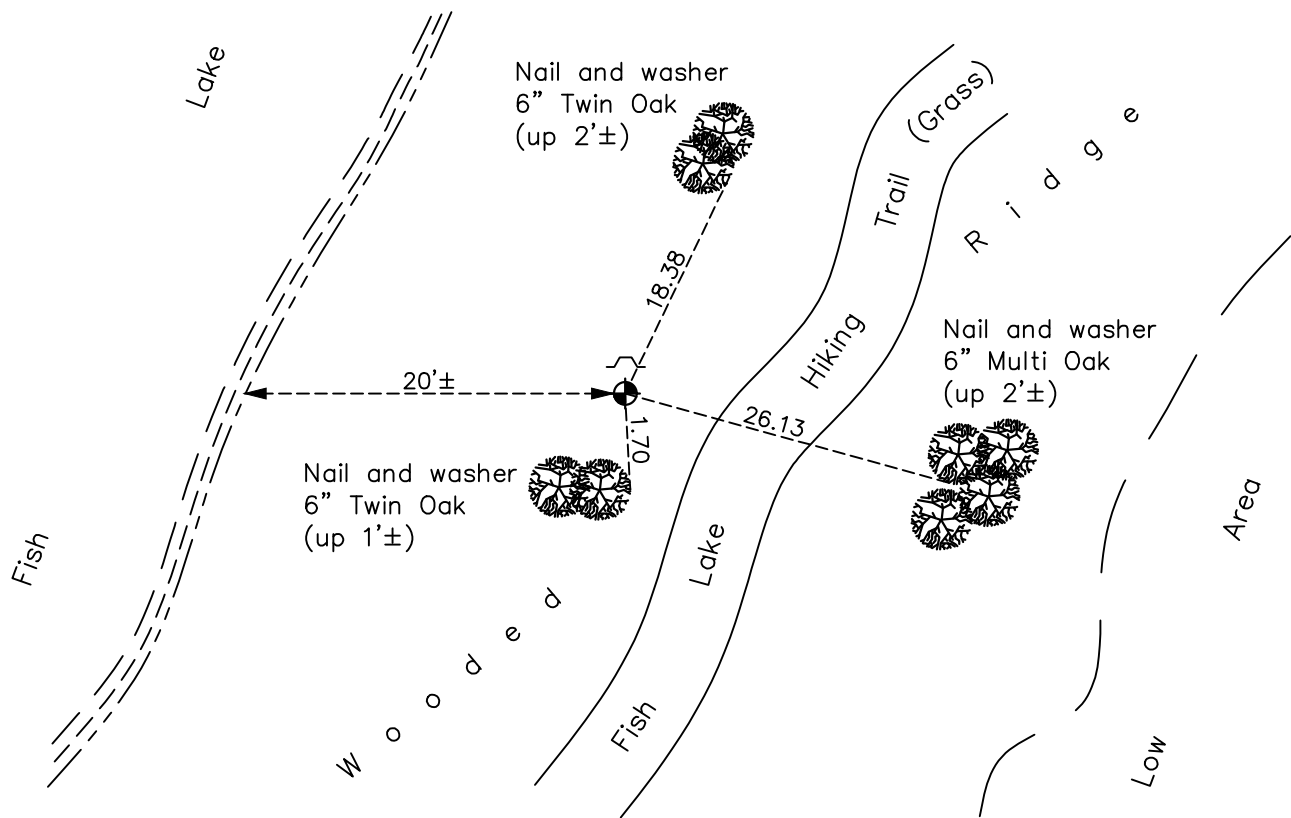
Witness Corner of Sec. 36 Township 34 Range 23
(on north line of NW 1/4)

On the 5th day of October, 1978, the described corner was evidenced by area resurvey

and to perpetuate the location of said corner, at the exact location thereof, a permanent marker was placed consisting of a cast iron monument with a sign and post on the north side

AND on the 6th day of March, 2023, said permanent marker was found flush and the
Coordinates verified using County RTK GPS method.

Updated reference ties are as shown below.



Revision Date
3/27/2023

N.A.D. 1983 Coordinates
 (1996 Adjustment)

County Project Coordinates	
Northing	<u>232855.4866</u>
Easting	<u>527214.8168</u>
Date	<u>4/07/03</u>

I hereby certify that this United States public land survey monument record is correct and complete to the best of my knowledge and belief.

David Zieglmeier Date 12/11/23

David M. Zieglmeier, Anoka County Surveyor
 Minnesota License Number 46179

HISTORY OF GOVERNMENT CORNER

Page No. 74

County of Anoka

State of Minnesota

Witness Corner of Sec. 36 Township 34 Range 23
(on north line of NW 1/4)

CORNER HISTORY:

October 5, 1978 - Found 1 1/4" iron rod found to be witness corner from area resurvey and replaced with a cast iron monument flush. Established ties to monument

June 10, 1982 - Found cast iron monument and updated ties.

August 8, 1986 - Found cast iron monument and updated ties.

August 26, 1992 - Found cast iron monument and updated ties.

April 7, 2003 - Established NAD 1983 (1996 adj.) Anoka County project coordinates by static GPS methods.

April 24, 2012 - Found cast iron monument and verified position by VRS GPS methods. All corner ties gone.

June 18, 2018 - Found cast iron monument and updated ties.

October 29, 2021 - Found cast iron monument, flush to surface. Verified position by VRS GPS methods. Updated ties.

March 6, 2023 - Found cast iron monument flush to surface, position verified by County RTK GPS method and the ties were reviewed.