

CERTIFICATE OF LOCATION OF GOVERNMENT CORNER

County of Anoka

State of Minnesota

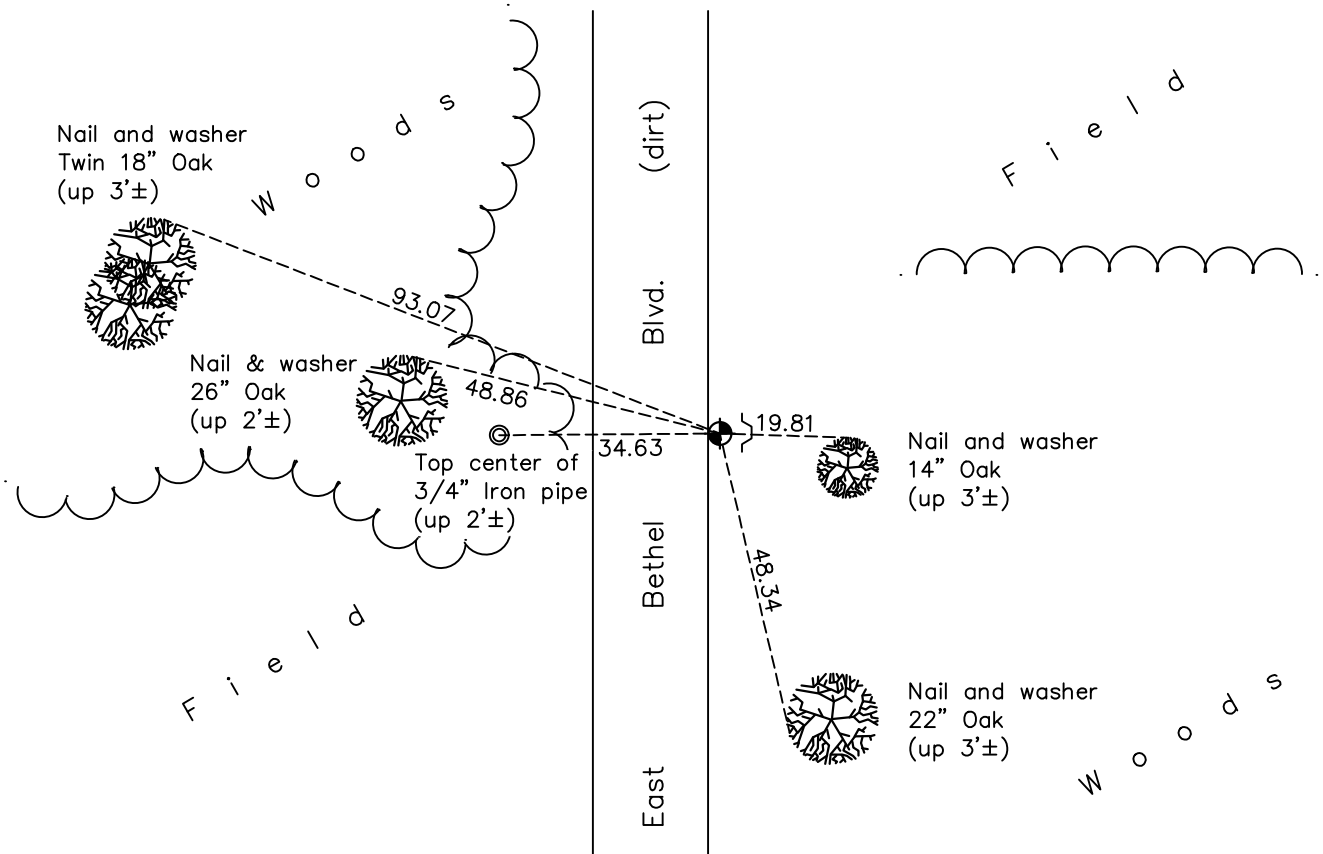
Southwest Corner of Sec. 26 Township 34 Range 23

On the 11th day of September, 1969, the described corner was evidenced by a 1" iron pipe

and to perpetuate the location of said corner, at the exact location thereof, a permanent marker was placed consisting of a cast iron monument

AND on the 2nd day of November, 2021, said permanent marker was found down 1'±
3'± east of edge of road. Ties were updated

Updated reference ties are as shown below.



Revision Date
01/10/2022

N.A.D. 1983 Coordinates
(1996 Adjustment)

County Project Coordinates	
Northing	<u>232865.9661</u>
Easting	<u>521435.1890</u>
Date	<u>5/21/02</u>

I hereby certify that this United States public land survey monument record is correct and complete to the best of my knowledge and belief.

David Zieglsmeier Date 2/2/23

David M. Zieglsmeier, Anoka County Surveyor
Minnesota License Number 46179

HISTORY OF GOVERNMENT CORNER

Page No. 76

County of Anoka

State of Minnesota

Southwest Corner of Sec. 26 Township 34 Range 23

CORNER HISTORY:

June 19, 1959 - Established ties to a 3/4" iron pipe down 0.3' by County Highway Department.

July 2, 1962 - Found 1" iron pipe down 0.3' using County Highway Department ties and updated ties.

July 19, 1967 - Found 1" iron pipe and updated ties.

September 11, 1969 - Found iron pipe and replaced with a cast iron monument down 0.5'±. Updated ties.

August 16, 1971 - Found cast iron monument and updated ties.

August 11, 1975 - Found cast iron monument and updated ties.

August 21, 1978 - Found cast iron monument and updated ties.

May 27, 1982 - Found cast iron monument and updated ties.

August 1, 1986 - Found cast iron monument and updated ties.

August 4, 1992 - Found cast iron monument and updated ties.

August 4, 1997 - Found cast iron monument and updated ties.

May 21, 2002 - Found cast iron monument and updated ties. Established NAD 1983 (1996 adj.) Anoka County project coordinates by static GPS methods.

September 27, 2012 - Found cast iron monument down 1'± and updated ties.

June 4, 2018 - Found cast iron monument down 1'±. Verified position by VRS GPS methods. Updated ties.

November 2, 2021 - Found cast iron monument down 1'±. Added sign & post west of mon. Verified position by VRS GPS methods. Updated ties.