

CERTIFICATE OF LOCATION OF GOVERNMENT CORNER

County of Anoka

State of Minnesota

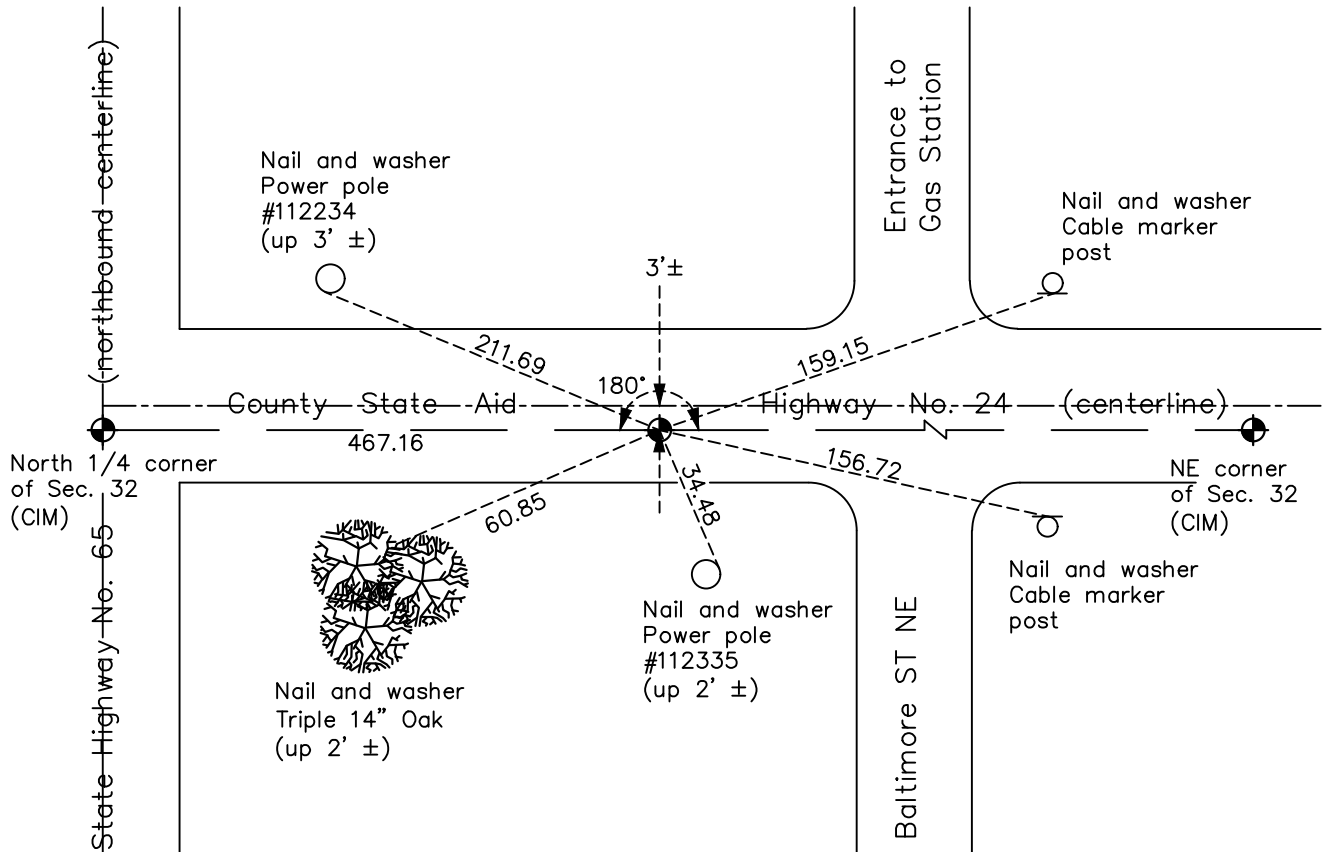
Witness Corner of Sec. 32 Township 34 Range 23
(to N 1/4 corner of section)

On the 22nd day of August, 1969, the described corner was evidenced by a bridge spike set on line between the N1/4 corner and NE corner of section

and to perpetuate the location of said corner, at the exact location thereof, a permanent marker was placed consisting of a cast iron monument replacing a 1/2" iron pipe after road construction

AND on the 7th day of June, 2021, said permanent marker was Reset with a cast iron monument flush after road construction using Static GPS methods. Updated ties.

Updated reference ties are as shown below.



Revision Date
06/09/2021

N.A.D. 1983 Coordinates
(1996 Adjustment)

County Project Coordinates	
Northing	<u>232731.0974</u>
Easting	<u>508683.6557</u>
Date	<u>5/09/02</u>

I hereby certify that this United States public land survey monument record is correct and complete to the best of my knowledge and belief.

David Zieglsmeier Date 2/8/23

David M. Zieglsmeier, Anoka County Surveyor
Minnesota License Number 46179

HISTORY OF GOVERNMENT CORNER

Page No. 81

County of Anoka

State of Minnesota

Witness Corner of Sec. 32 Township 34 Range 23
(to N 1/4 corner of section)

CORNER HISTORY:

August 22, 1969 - Found chisel mark(N1/4 corner) and set bridge spike to the East on-line between N1/4 corner and NE corner of section. Established ties to bridge spike and distance to N1/4 corner.

August 17, 1971 - Found bridge spike and updated ties.

August 11, 1975 - Found bridge spike and updated ties.

August 22, 1978 - Found bridge spike and updated ties.

June 7, 1982 - Found bridge spike and updated ties.

August 3, 1992 - Drawing revision date with unknown history.

March 24, 1997 - Found missing and set 1/2" iron pipe using ties. Updated ties to iron pipe.

May 9, 2002 - Established NAD 1983 (1996 adj.) Anoka County project coordinates by static GPS methods.

April 23, 2021 - Found 1/2" iron pipe, set construction ties and verified position by VRS GPS methods prior to road construction. Removed iron pipe.

June 7, 2021 - Set cast iron monument flush after road construction using static GPS methods. Updated ties.