

CERTIFICATE OF LOCATION OF GOVERNMENT CORNER

County of Anoka

State of Minnesota

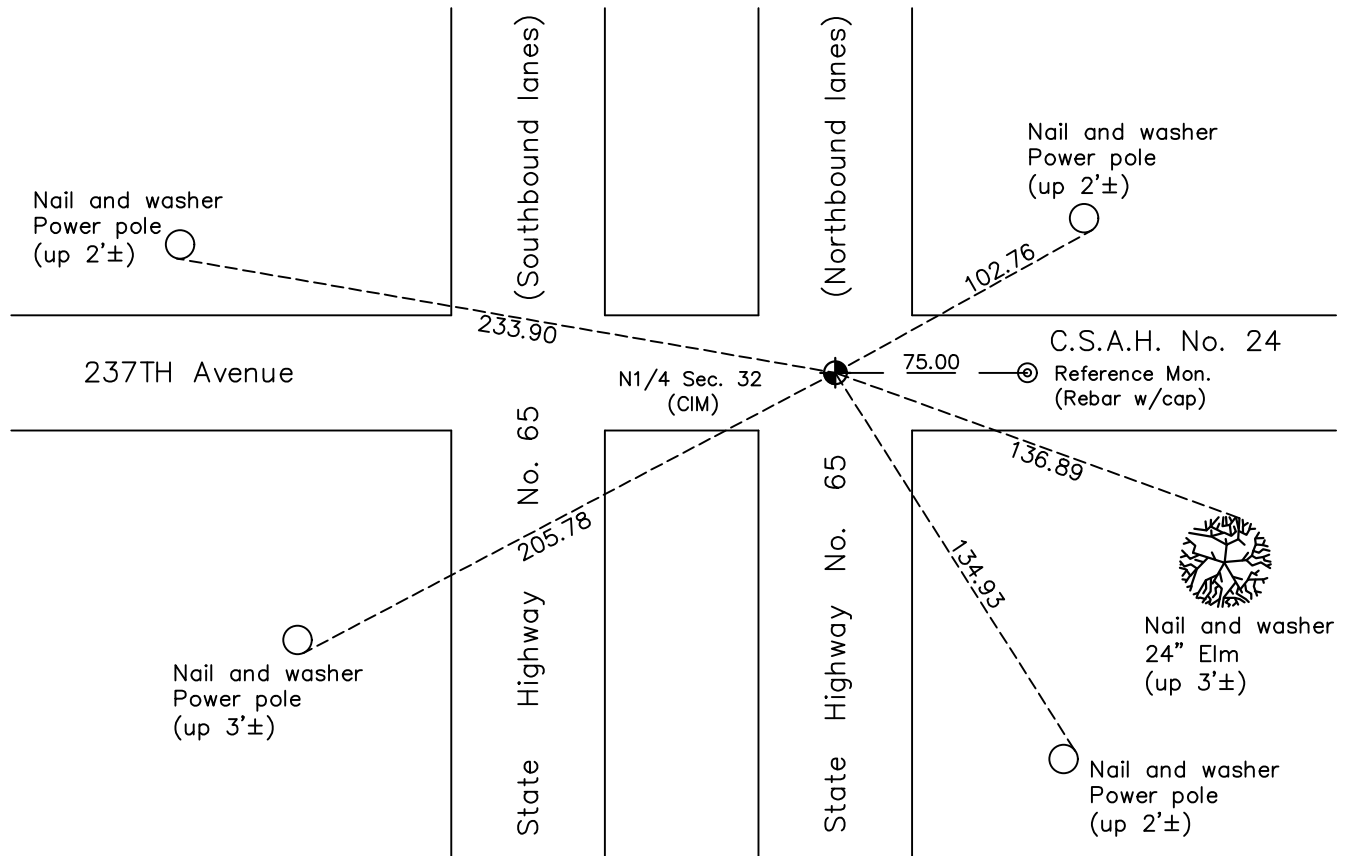
North $\frac{1}{4}$ Corner of Sec. 32 Township 34 Range 23

On the 31st day of May, 1960, the described corner was evidenced by a chisel mark

and to perpetuate the location of said corner, at the exact location thereof, a permanent marker was placed consisting of a cast iron monument

AND on the 8th day of June, 2023, said permanent marker was found slim cast iron mon. w/ regular size top flush. A reference monument (index #1618) was set 75' easterly and tied out

Updated reference ties are as shown below.



Revision Date
6/22/2023

N.A.D. 1983 Coordinates
(1996 Adjustment)

| County Project Coordinates | |
|----------------------------|--------------------|
| Northing | <u>232726.0562</u> |
| Easting | <u>508216.4947</u> |
| Date | <u>9/20/06</u> |

I hereby certify that this United States public land survey monument record is correct and complete to the best of my knowledge and belief.

David Zieglmeier Date 6/28/23

David Zieglmeier Anoka County Surveyor
Minnesota License Number 46179

REFERENCE MONUMENT FOR GOVERNMENT CORNER

Reference to County of Anoka State of Minnesota

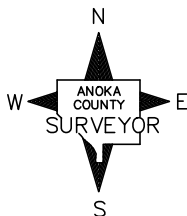
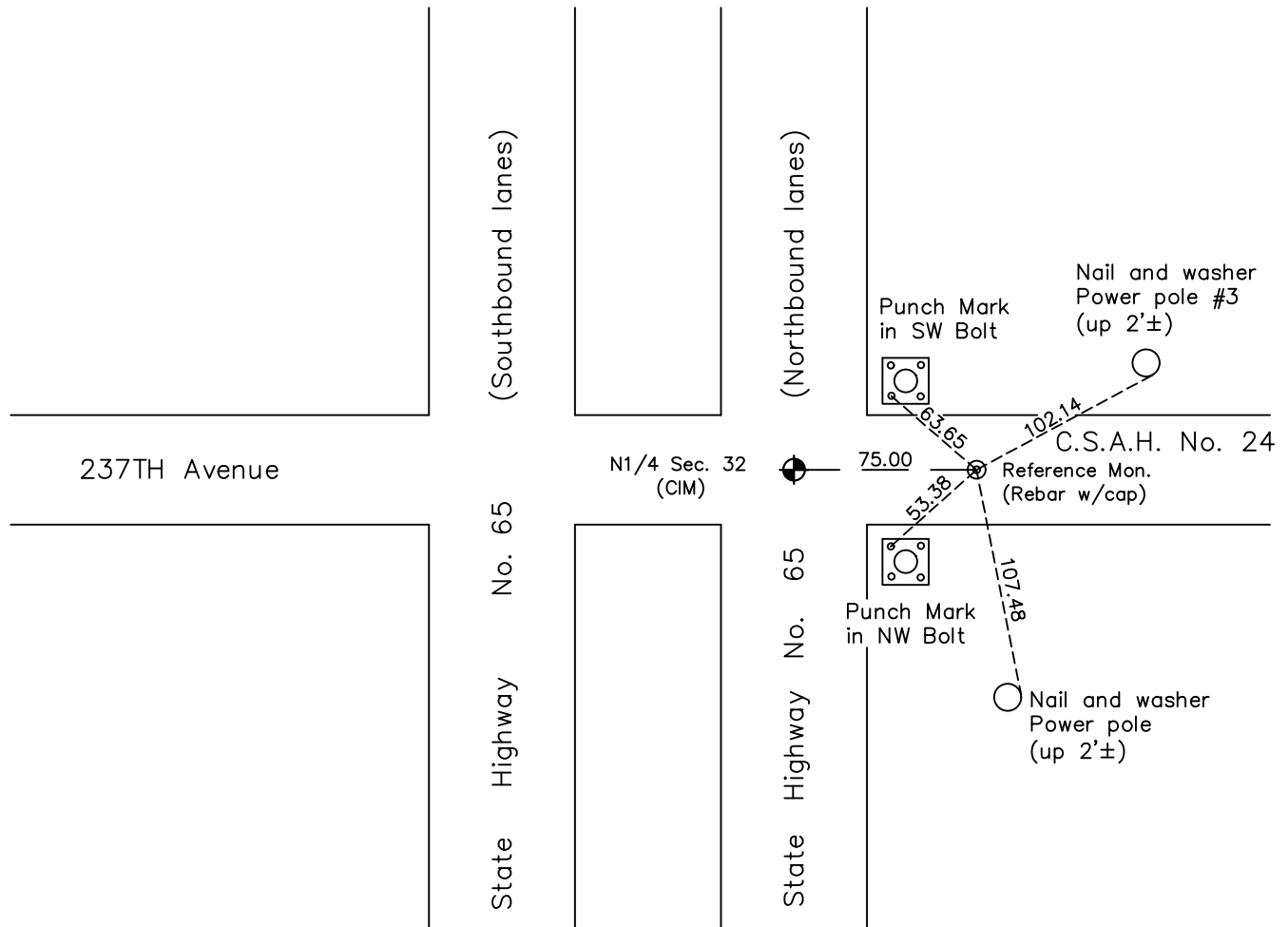
North 1/4 Corner of Sec. 29 Township 34 Range 23

On the 8th day of June, 2023, the described reference monument was evidenced by a computed position 75' easterly along the section line

and to reference the location of said corner, at the exact location thereof, a permanent marker was placed consisting of A 1/2" x 2' rebar with Anoka County aluminum cap and punch mark

AND on the 8th day of June, 2023, said permanent marker was set flush using RTK GPS methods and ties were established to the reference monument

Updated reference ties are as shown below.



Revision Date
 6/22/2023

REFERENCE MONUMENT
 N.A.D. 1983 (2011 Adj.)

| County Project Coordinates | |
|----------------------------|-------------|
| Northing | 232726.8653 |
| Easting | 508291.4903 |
| Date | 6/8/2023 |

HISTORY OF GOVERNMENT CORNER

Page No. 81A

County of Anoka

State of Minnesota

North 1/4 Corner of Sec. 32 Township 34 Range 23

CORNER HISTORY:

May 31, 1960 - Set chisel mark in concrete road and established ties to chisel mark.

August 22, 1967 - Found chisel mark and updated ties.

August 22, 1969 - Found chisel mark(N1/4 corner) and set bridge spike(witness corner) to the East on-line between N1/4 corner and NE corner of section. Established ties to bridge spike and distance to N1/4 corner.

August 17, 1971 - Found chisel mark and bridge spike. Updated ties.

August 11, 1975 - Found chisel mark and bridge spike. Updated ties.

August 22, 1978 - Found chisel mark and bridge spike. Updated ties.

June 7, 1982 - Found chisel mark and bridge spike. Updated ties.

August 3, 1992 - Drawing revision date with unknown history.

March 24, 1997 - Drawing revision date with unknown history.

September 20, 2006 - Not found. Set cast iron monument using witness corner to the East. Established ties to cast iron monument. Established NAD 1983 (1996 adj.) Anoka County project coordinates using static GPS methods.

July 2, 2012 - Found cast iron monument, set construction tie and updated corner ties prior to road construction. Cast iron monument not removed.

August 7, 2012 - Set 11" slim cast iron monument with regular monument top flush (on top of found cast iron monument down 1') after road construction. Verified position by static GPS methods and updated ties.

June 8, 2023 - Found cast iron monument flush with road surface. Set a **reference monument** to a computed position 75' easterly along the section line using RTK GPS method consisting of a 1/2" x 2' long rebar with Anoka County aluminum cap and punch mark flush with surface. Established ties to **reference monument**.