

CERTIFICATE OF LOCATION OF GOVERNMENT CORNER

County of Anoka

State of Minnesota

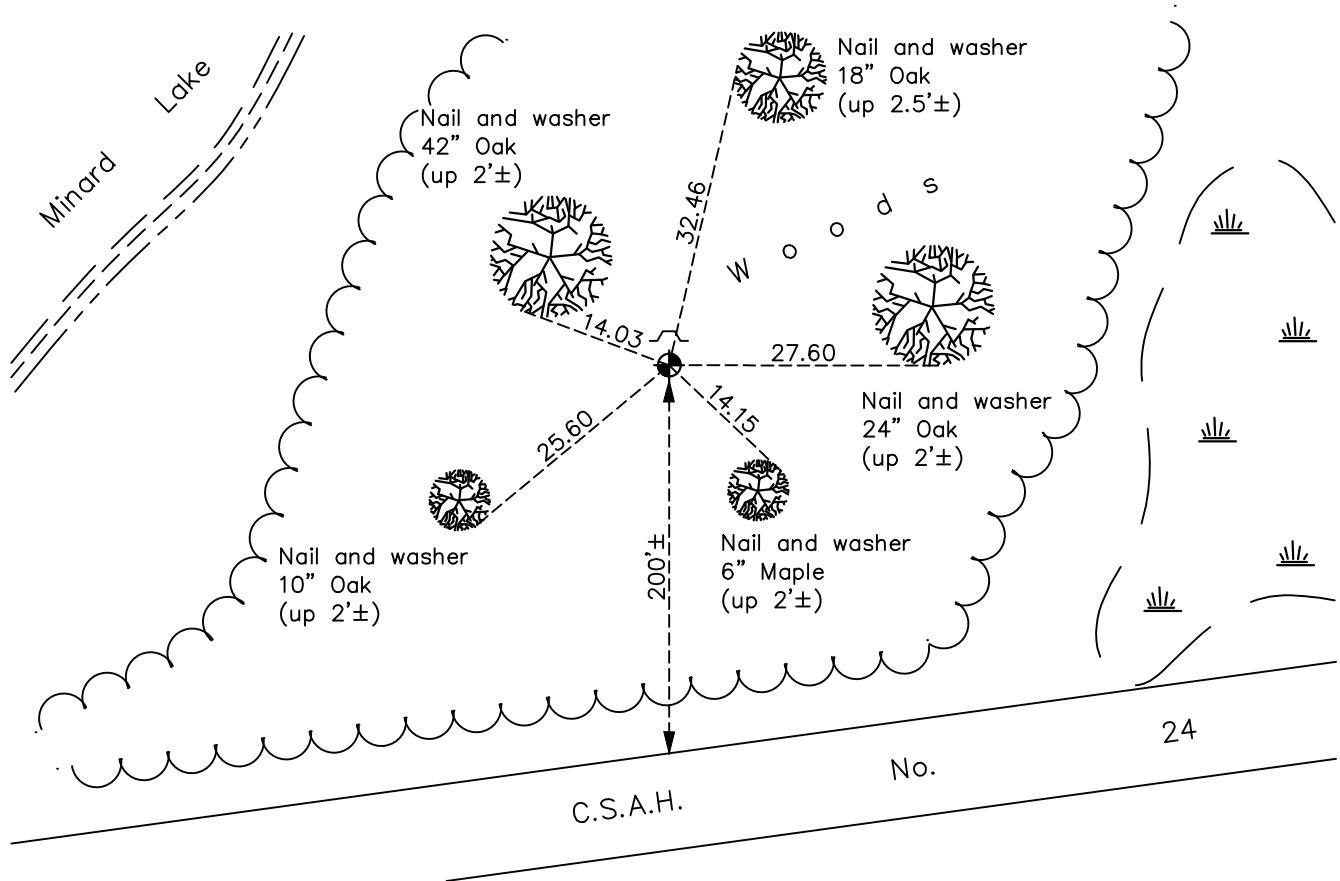
Northwest Corner of Sec. 32 Township 34 Range 23

On the 10th day of April, 1980, the described corner was evidenced by a 1 1/4" iron pipe

and to perpetuate the location of said corner, at the exact location thereof, a permanent marker was placed consisting of a cast iron monument

AND on the 9th day of November, 2021, said permanent marker was found down 0.1'± and the ties were updated, sign and post added on north side of monument.

Updated reference ties are as shown below.



Revision Date
 01/19/2022

N.A.D. 1983 Coordinates
 (1996 Adjustment)

County Project Coordinates	
Northing	<u>232690.5398</u>
Easting	<u>505579.7204</u>
Date	<u>5/15/02</u>

I hereby certify that this United States public land survey monument record is correct and complete to the best of my knowledge and belief.

David Zieglermeier Date 2/8/23

David M. Zieglermeier, Anoka County Surveyor
 Minnesota License Number 46179

HISTORY OF GOVERNMENT CORNER

Page No. 82

County of Anoka

State of Minnesota

Northwest Corner of Sec. 32 Township 34 Range 23

CORNER HISTORY:

Unknown date - Iron pipe with ties by N.C.Hoium

February 5, 1963 - Found 1 1/4" iron pipe up 0.1' and updated ties.

July 12, 1967 - Found 1 1/4" iron pipe up 0.1' and updated ties.

August 20, 1971 - Found 1 1/4" iron pipe up 0.1' and updated ties.

August 11, 1975 - Found 1 1/4" iron pipe and updated ties.

August 28, 1978 - Found 1 1/4" iron pipe and updated ties.

April 10, 1980 - Found 1 1/4" iron pipe and replaced with cast iron monument.

June 7, 1982 - Found cast iron monument and updated ties.

August 5, 1992 - Found cast iron monument and updated ties.

August 13, 1997 - Found cast iron monument and updated ties.

May 15, 2002 - Found cast iron monument and updated ties. Established NAD 1983 (1996 adj.) Anoka County project coordinates by static GPS methods.

December 20, 2012 - Found cast iron monument and updated ties.

April 9, 2018 - Found cast iron monument down 0.1'± and updated ties.

November 9, 2021 - . Found cast iron monument down 0.1'±. Verified position by VRS GPS methods. Updated ties.