

# CERTIFICATE OF LOCATION OF GOVERNMENT CORNER

County of Anoka

State of Minnesota

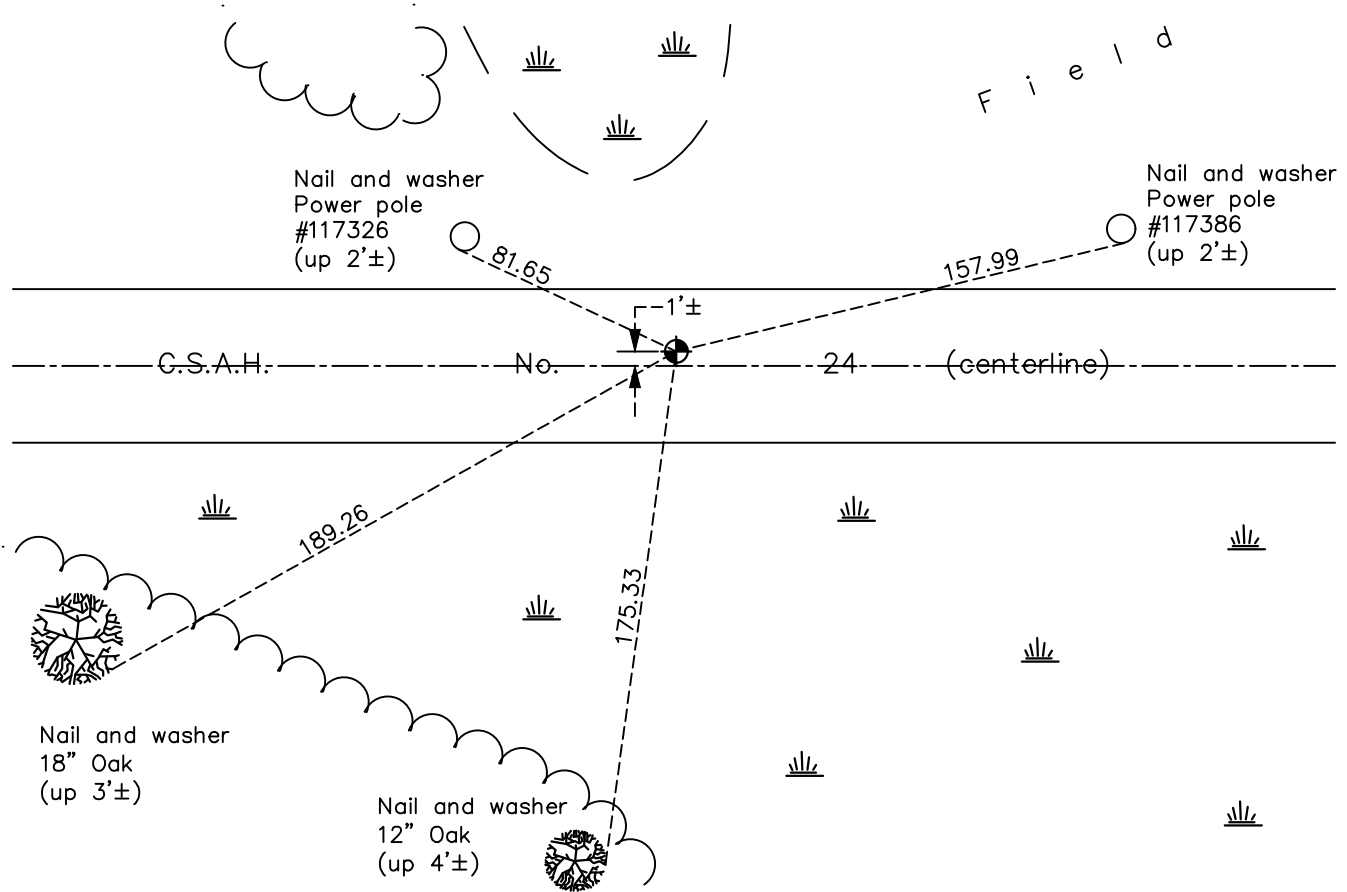
## North $\frac{1}{4}$ Corner of Sec. 31 Township 34 Range 23

On the 14th day of July, 1967, the described corner was evidenced by a P.K. nail

and to perpetuate the location of said corner, at the exact location thereof, a permanent marker was placed consisting of a cast iron monument

AND on the 9th day of November, 2021, said permanent marker was found flush and the ties were updated

Updated reference ties are as shown below.



Revision Date  
3/12/19

N.A.D. 1983 Coordinates  
(1996 Adjustment)

County Project Coordinates	
Northing	<u>232710.9961</u>
Easting	<u>502934.3578</u>
Date	<u>5/09/02</u>

I hereby certify that this United States public land survey monument record is correct and complete to the best of my knowledge and belief.

*David Zieglsmeier* Date 2/8/23

David M. Zieglsmeier, Anoka County Surveyor  
Minnesota License Number 46179

# HISTORY OF GOVERNMENT CORNER

Page No. 83

County of Anoka

State of Minnesota

## North 1/4 Corner of Sec. 31 Township 34 Range 23

### **CORNER HISTORY:**

Unknown date - p.k. spike with ties by N.C.Hoium

February 26, 1962 - Found p.k. nail and updated ties.

July 14, 1967 - Found p.k. nail and replaced with cast iron monument flush and updated ties.

August 17, 1971 - Found cast iron monument and updated ties.

August 12, 1975 - Found cast iron monument and updated ties.

October 25, 1977 - Raised cast iron monument.

August 28, 1978 - Found cast iron monument and updated ties.

May 27, 1982 - Found cast iron monument and updated ties.

August 5, 1992 - Found cast iron monument and updated ties.

August 5, 1997 - Found cast iron monument and updated ties.

May 9, 2002 - Established NAD 1983 (1996 adj.) Anoka County project coordinates by static GPS methods.

December 20, 2012 - Found cast iron monument. Verified position by VRS GPS methods. Updated ties.

May 15, 2017 - Found cast iron monument and set construction tie prior to road construction. Verified position by VRS GPS methods and updated ties. Removed monument.

August 10, 2017 - Set cast iron monument using static GPS methods after road construction. Verified position using VRS GPS methods and updated ties.

April 5, 2018 - Found cast iron monument. Verified position by VRS GPS methods. Updated ties.

November 9, 2021- Found cast iron monument flush. Verified position by VRS GPS methods. Updated ties.