

CERTIFICATE OF LOCATION OF GOVERNMENT CORNER

County of Anoka

State of Minnesota

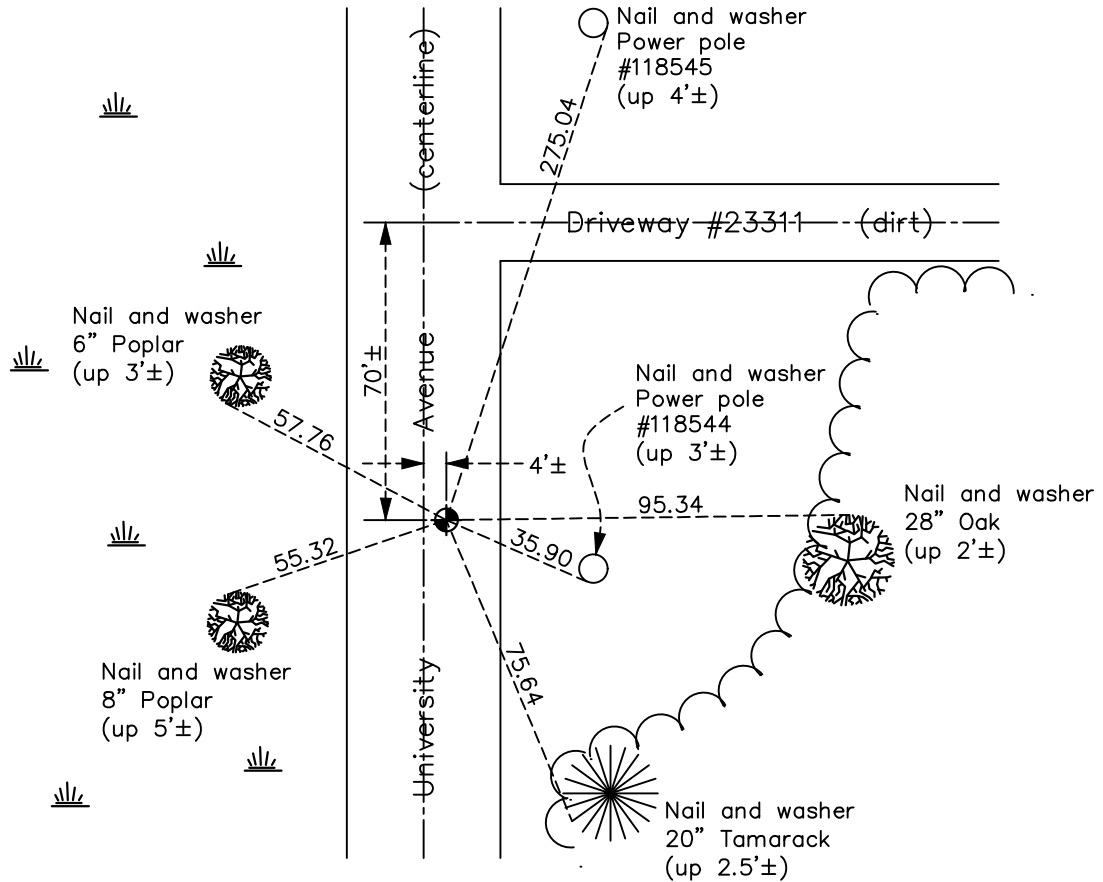
West 1/4 Corner of Sec. 31 Township 34 Range 23

On the 29th day of July, 1969, the described corner was evidenced by P.K. nail set by
an area resurvey

and to perpetuate the location of said corner, at the exact location thereof, a permanent marker
was placed consisting of a cast iron monument

AND on the 4th day of November, 2021, said permanent marker was found flush and the
ties were updated.

Updated reference ties are as shown below.



N.A.D. 1983 Coordinates
(1996 Adjustment)

County Project Coordinates

Northing 230143.6814

Easting 500341.1314

Date 5/15/02

Revision Date

01/19/2022

I hereby certify that this United States public land survey monument record is correct and complete to the best of my knowledge and belief.

David Zieglmeier Date 2/8/23

David M. Zieglmeier, Anoka County Surveyor

Minnesota License Number 46179

HISTORY OF GOVERNMENT CORNER

Page No. 85

County of Anoka

State of Minnesota

West 1/4 Corner of Sec. 31 Township 34 Range 23

CORNER HISTORY:

April 7, 1969 - Set p.k. nail using area resurvey and established ties to the p.k. nail.

July 29, 1969 - Found p.k. nail and replaced with a cast iron monument flush. Updated ties.

August 19, 1971- Found cast iron monument and updated ties.

August 11, 1975 - Found cast iron monument and updated ties.

August 28, 1978 - Found cast iron monument and updated ties.

May 27, 1982 - Found cast iron monument and updated ties.

August 4, 1986 - Found cast iron monument and updated ties.

May 22, 1992 - Found cast iron monument and updated ties.

August 5, 1992 - Found cast iron monument and updated ties.

August 6, 1997 - Found cast iron monument and updated ties.

May 25, 2000 - Found cast iron monument and updated ties.

May 15, 2002 - Found cast iron monument and updated ties. Established NAD 1983 (1996 adj.) Anoka County project coordinates by static GPS methods.

December 20, 2012 - Found cast iron monument. Verified position by VRS GPS methods. Updated ties.

May 13, 2013 - Found cast iron monument, set construction ties, verified position by VRS GPS methods and updated corner ties prior to road construction. Removed monument.

August 20, 2013 - Set cast iron monument after road construction. Verified position by VRS GPS methods. Updated ties.

April 9, 2018 - Found cast iron monument flush. Verified position by VRS GPS methods. Updated ties.

November 4, 2021 - Found cast iron monument flush. Verified position by VRS GPS methods. Updated ties.