

CERTIFICATE OF LOCATION OF GOVERNMENT CORNER

County of Anoka

State of Minnesota

Witness Corner of Sec. 32 Township 34 Range 23

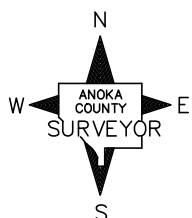
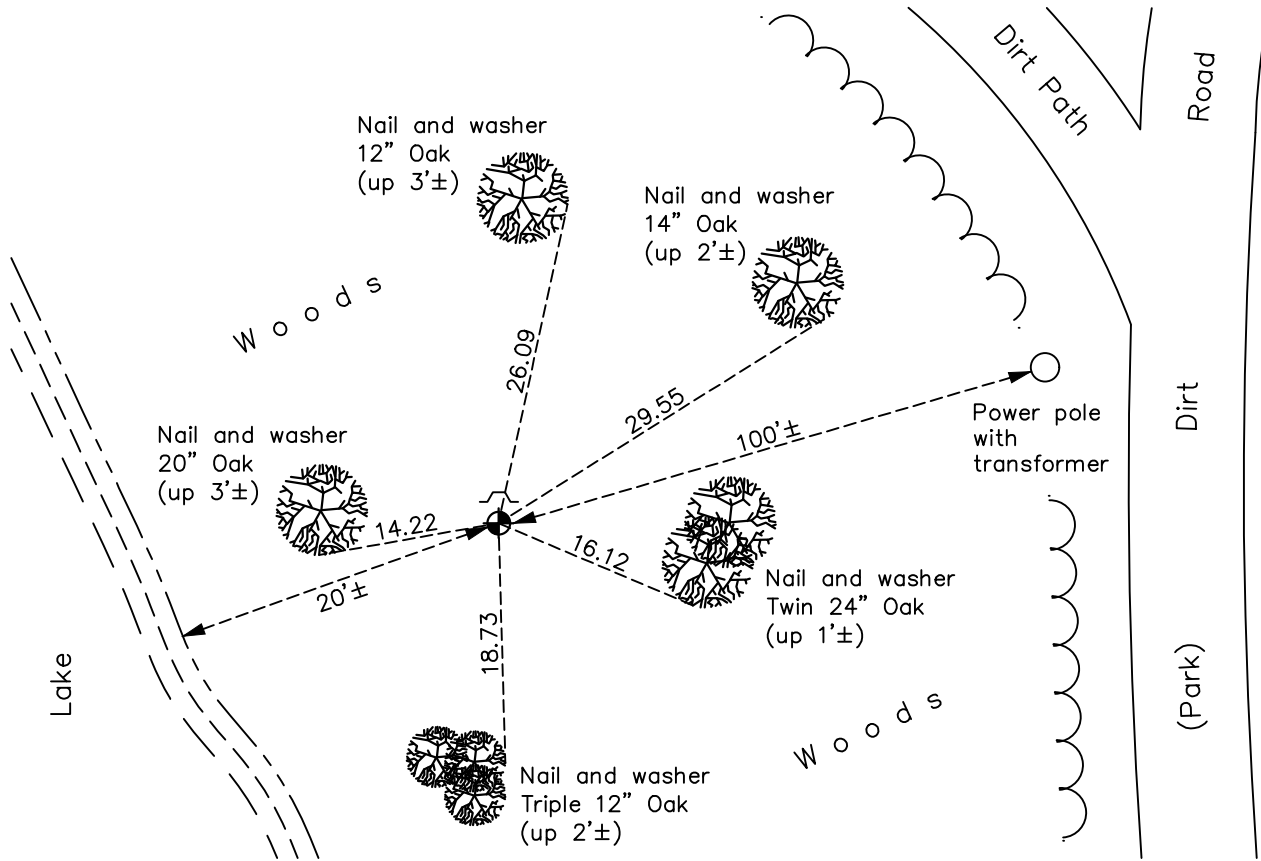
(On west line of section)

On the 23rd day of March, 1987, the described corner was evidenced by a 3/4" iron pipe

and to perpetuate the location of said corner, at the exact location thereof, a permanent marker was placed consisting of a cast iron monument

AND on the 7th day of March, 2023, said permanent marker was found down 0.1'±, position verified correct by County RTK GPS method. Updated ties. Added sign to existing post to North.

Updated reference ties are as shown below.



Revision Date

3/27/2023

N.A.D. 1983 Coordinates
(1996 Adjustment)

County Project Coordinates	
Northing	<u>230492.9031</u>
Easting	<u>505625.9014</u>
Date	<u>5/20/02</u>

I hereby certify that this United States public land survey monument record is correct and complete to the best of my knowledge and belief.

David Zieglermeier Date 12/11/23

David M. Zieglermeier, Anoka County Surveyor
Minnesota License Number 46179

HISTORY OF GOVERNMENT CORNER

Page No. 86

County of Anoka

State of Minnesota

Witness Corner of Sec. 32 Township 34 Range 23
(On west line of section)

CORNER HISTORY:

August 22, 1967 - Set 3/4" iron pipe and established ties to iron pipe.

August 20, 1971 - Found 3/4" iron pipe and updated ties.

August 12, 1975 - Found 3/4" iron pipe and updated ties.

August 22, 1978 - Found 3/4" iron pipe and updated ties.

June 7, 1982 - Found 3/4" iron pipe and updated ties.

March 23, 1987 - Found 3/4" iron pipe and replaced with a cast iron monument. Updated ties. (date of monument replacement unclear, discussed and assumed to be on this date)

August 27, 1992 - Found cast iron monument and updated ties.

August 13, 1997 - Found cast iron monument and updated ties.

May 20, 2002 - Found cast iron monument and updated ties. Established NAD 1983 (1996 adj.) Anoka County project coordinates by static GPS methods.

December 20, 2012 - Found cast iron monument and updated ties.

September 4, 2018 - Found cast iron monument down 0.1'± and updated ties.

November 3, 2021 - Found cast iron monument down 0.1'±. Verified position by VRS GPS methods. Updated ties.

March 7, 2023 - Found cast iron monument down 0.1'± and verified the position as correct with County RTK GPS method. Updated the ties. Added sign to existing post.