

# CERTIFICATE OF LOCATION OF GOVERNMENT CORNER

County of Anoka

State of Minnesota

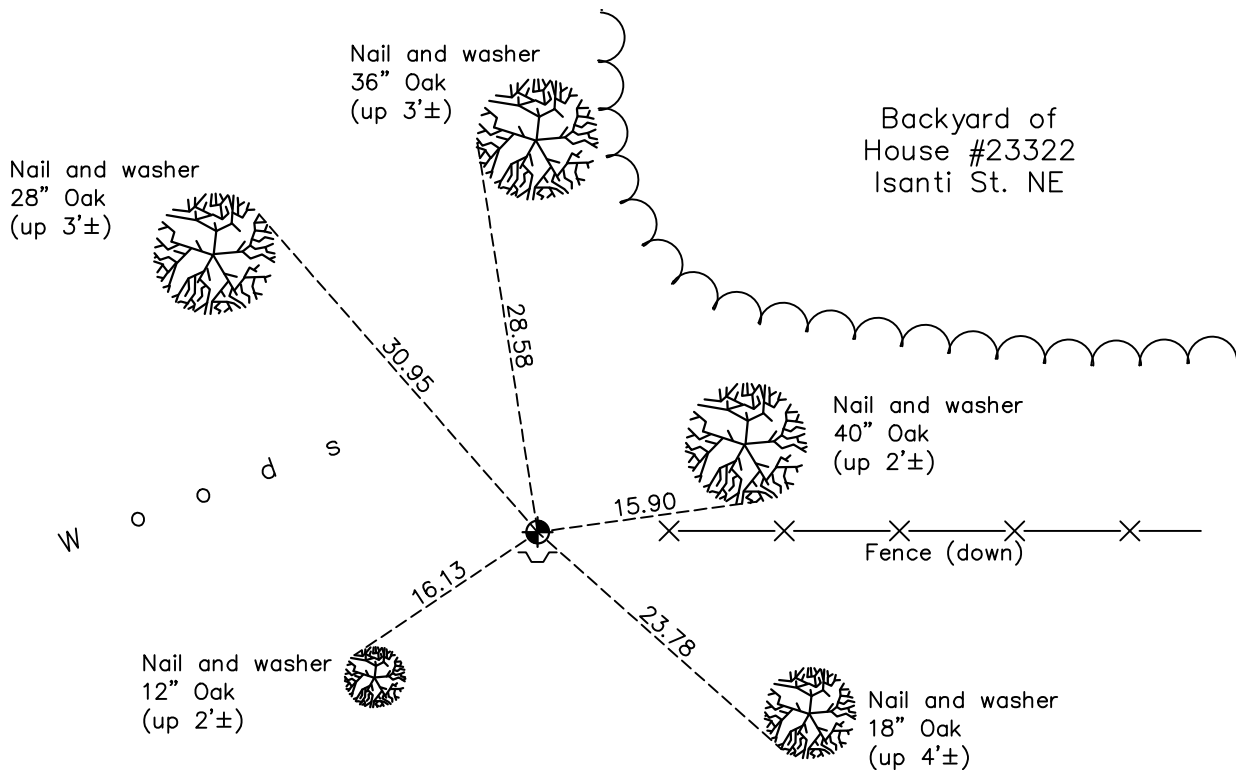
## East 1/4 Corner of Sec. 32 Township 34 Range 23

On the 14th day of August, 1975, the described corner was evidenced by a 1" iron pipe

and to perpetuate the location of said corner, at the exact location thereof, a permanent marker was placed consisting of a cast iron monument with a sign and post on the south side

AND on the 4th day of November, 2021, said permanent marker was found flush and the ties were updated

Updated reference ties are as shown below.



Revision Date  
01/19/2022

N.A.D. 1983 Coordinates  
 (1996 Adjustment)

County Project Coordinates	
Northing	<u>230109.1007</u>
Easting	<u>510911.8663</u>
Date	<u>4/01/03</u>

I hereby certify that this United States public land survey monument record is correct and complete to the best of my knowledge and belief.

*David Zieglermeier* Date 2/8/23

David M. Zieglermeier, Anoka County Surveyor  
 Minnesota License Number 46179

# HISTORY OF GOVERNMENT CORNER

Page No. 87

County of Anoka

State of Minnesota

East 1/4 Corner of Sec. 32 Township 34 Range 23

## **CORNER HISTORY:**

Unknown date - Iron pipe with ties by N.C.Hoium.

July 18, 1967 - Found 1" iron pipe flush and updated ties.

August 23, 1971 - Found 1" iron pipe and updated ties.

August 14, 1975 - Found 1" iron pipe and replaced with a cast iron monument flush and updated ties.

August 30, 1978 - Found cast iron monument and updated ties.

June 7, 1982 - Found cast iron monument and updated ties.

August 8, 1986 - Found cast iron monument and updated ties.

August 19, 1992 - Found cast iron monument and updated ties.

April 1, 2003 - Established NAD 1983 (1996 adj.) Anoka County project coordinates by static GPS methods.

May 12, 2005 - Found cast iron monument and updated ties.

October 24, 2012 - Found cast iron monument and updated ties.

April 10, 2018 - Found cast iron monument flush and updated ties.

November 4, 2021 - Found cast iron monument flush and updated ties.