

CERTIFICATE OF LOCATION OF GOVERNMENT CORNER

County of Anoka

State of Minnesota

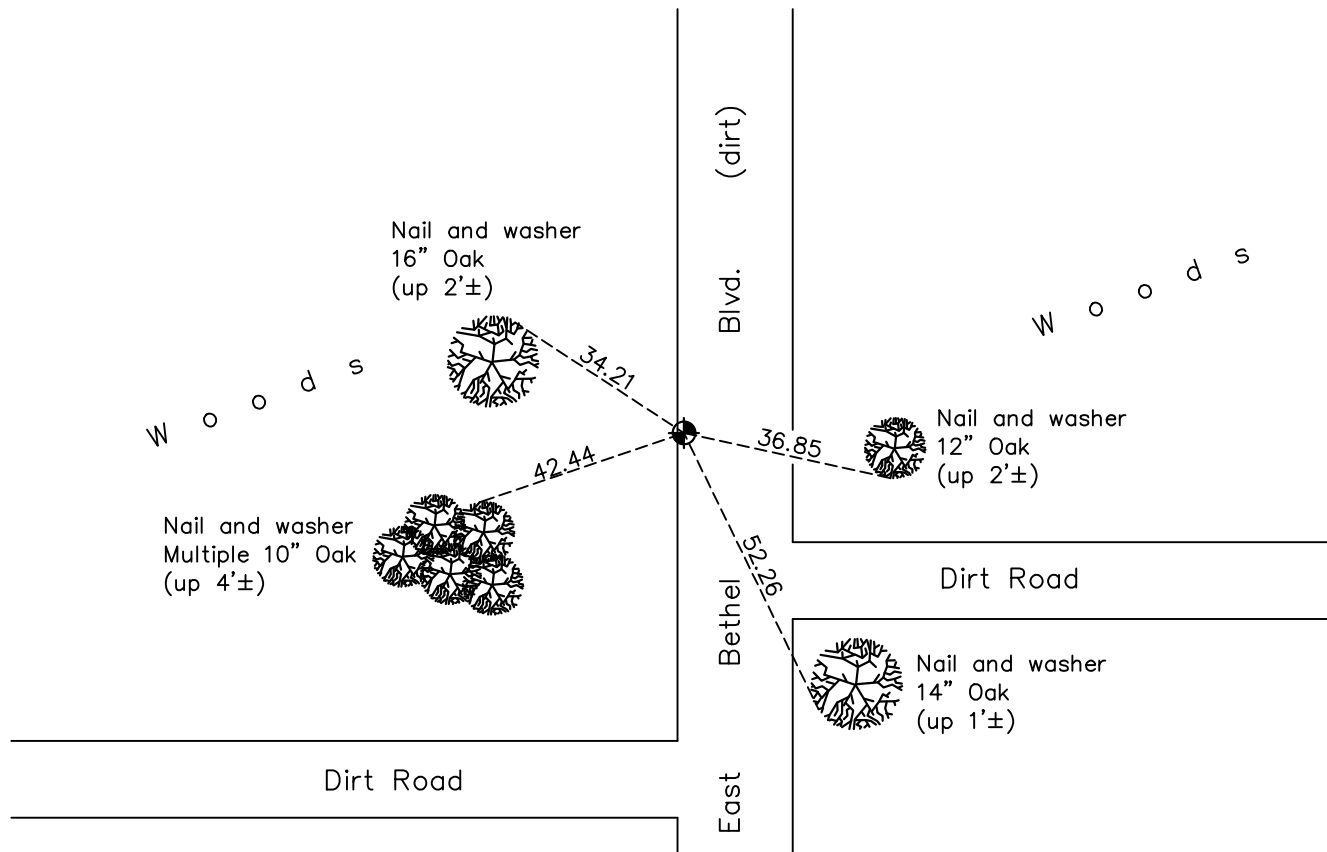
West 1/4 Corner of Sec. 35 Township 34 Range 23

On the 28th day of September, 1976, the described corner was evidenced by area resurvey

and to perpetuate the location of said corner, at the exact location thereof, a permanent marker was placed consisting of a cast iron monument

AND on the 2nd day of November, 2021, said permanent marker was found down 0.5'± and on west edge of road. Ties were updated.

Updated reference ties are as shown below.



Revision Date
3/14/19

N.A.D. 1983 Coordinates
 (1996 Adjustment)

County Project Coordinates	
Northing	<u>230220.6295</u>
Easting	<u>521452.8776</u>
Date	<u>5/21/02</u>

I hereby certify that this United States public land survey monument record is correct and complete to the best of my knowledge and belief.
David Zieglmeier Date 2/8/23
 David M. Zieglmeier, Anoka County Surveyor
 Minnesota License Number 46179

HISTORY OF GOVERNMENT CORNER

Page No. 89

County of Anoka

State of Minnesota

West 1/4 Corner of Sec. 35 Township 34 Range 23

CORNER HISTORY:

September 28, 1976 - Set cast iron monument down 0.5'± using area resurvey. Established ties to monument.

August 21, 1978 - Found cast iron monument and updated ties.

May 26, 1982 - Found cast iron monument and updated ties.

August 1, 1986 - Found cast iron monument and updated ties.

August 4, 1992 - Found cast iron monument and updated ties.

August 6, 1997 - Found cast iron monument and updated ties.

May 21, 2002 - Found cast iron monument and updated ties. Established NAD 1983 (1996 adj.) Anoka County project coordinates by static GPS methods.

September 27, 2012 - Found cast iron monument down 0.5'± and updated ties.

June 4, 2018 - Found cast iron monument down 0.5'±. Verified position by VRS GPS methods. Updated ties.

November 2, 2021 - Found cast iron monument down 0.5'±. Verified position by VRS GPS methods. Updated ties.