

# CERTIFICATE OF LOCATION OF GOVERNMENT CORNER

County of Anoka

State of Minnesota

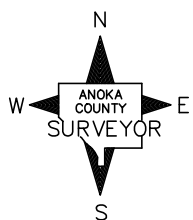
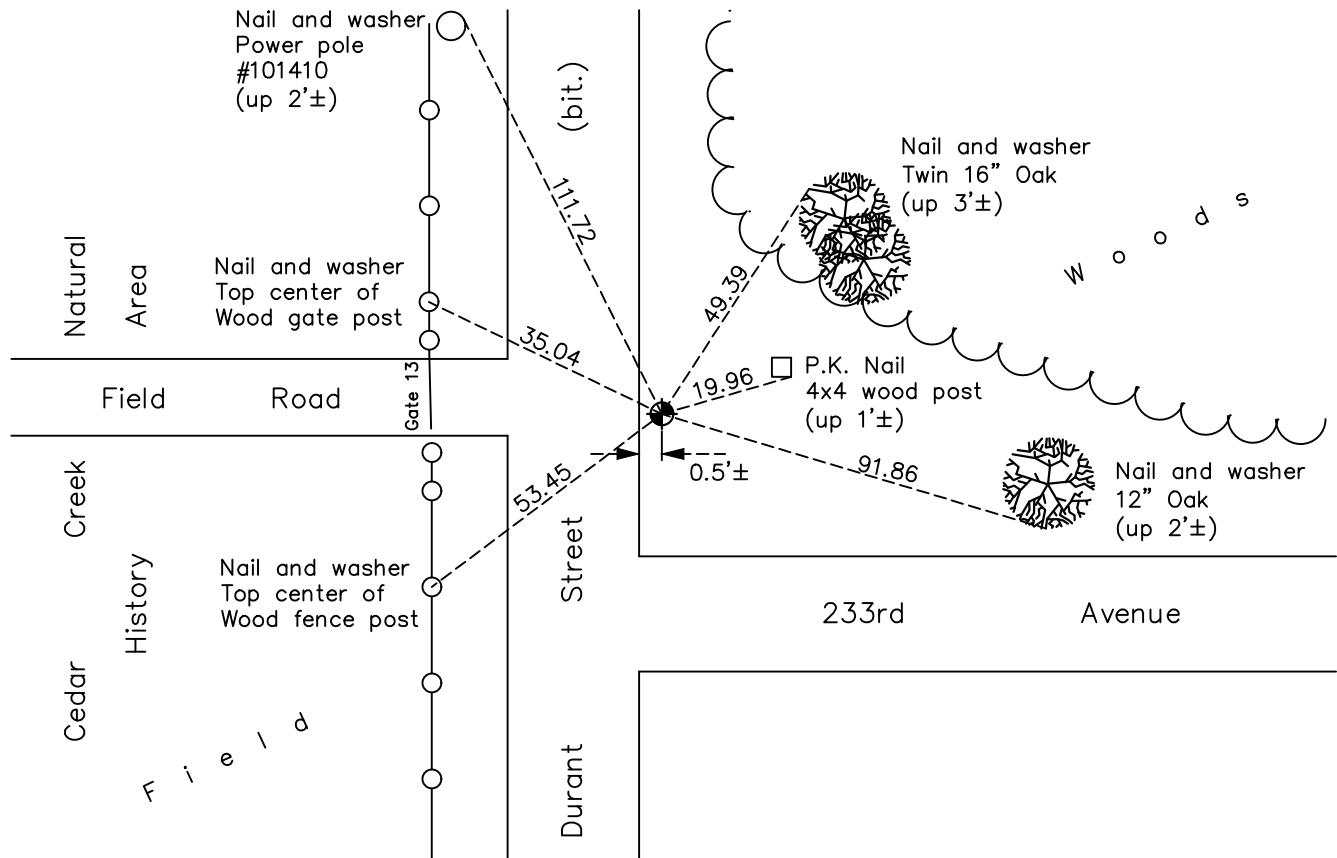
## West 1/4 Corner of Sec. 36 Township 34 Range 23

On the 27th day of September, 1963, the described corner was evidenced by area resurvey

and to perpetuate the location of said corner, at the exact location thereof, a permanent marker was placed consisting of a cast iron monument

AND on the 29th day of October, 2021, said permanent marker was found down 0.3'± and the ties were updated

Updated reference ties are as shown below.



Revision Date  
01/19/2022

N.A.D. 1983 Coordinates  
 (1996 Adjustment)

County Project Coordinates	
Northing	<u>230239.6055</u>
Easting	<u>526673.3777</u>
Date	<u>5/21/02</u>

I hereby certify that this United States public land survey monument record is correct and complete to the best of my knowledge and belief.

*David Zieglmeier* Date 2/8/23

David M. Zieglmeier, Anoka County Surveyor  
 Minnesota License Number 46179

# HISTORY OF GOVERNMENT CORNER

Page No. 90

County of Anoka

State of Minnesota

## West 1/4 Corner of Sec. 36 Township 34 Range 23

### **CORNER HISTORY:**

September 27, 1963 - Set cast iron monument down 0.5'± using area resurvey. Established ties to monument.

August 16, 1971 - Found cast iron monument and updated ties.

August 8, 1975 - Found cast iron monument down 0.8'± and updated ties.

August 18, 1978 - Found cast iron monument and updated ties.

May 26, 1982 - Found cast iron monument and updated ties.

June 17, 1985 - Found cast iron monument and removed prior to road construction.

October 11, 1985 - Set cast iron monument after construction and updated ties.

August 8, 1986 - Found cast iron monument and updated ties.

July 31, 1992 - Found cast iron monument and updated ties.

August 6, 1997 - Found cast iron monument and updated ties.

May 21, 2002 - Found cast iron monument and updated ties. Established NAD 1983 (1996 adj.) Anoka County project coordinates by static GPS methods.

April 25, 2012 - Found cast iron monument down 0.5'±. Verified position by VRS GPS methods. Updated ties.

May 25, 2018 - Found cast iron monument down 0.5'±. Verified position by VRS GPS methods. Updated ties.

October 29, 2021 - Found cast iron monument down 0.3'±. Verified position by VRS GPS methods. Updated ties.