

CERTIFICATE OF LOCATION OF GOVERNMENT CORNER

County of Anoka

State of Minnesota

Witness Corner of Sec. 36 Township 34 Range 23

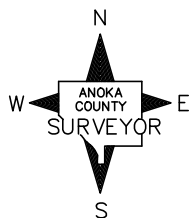
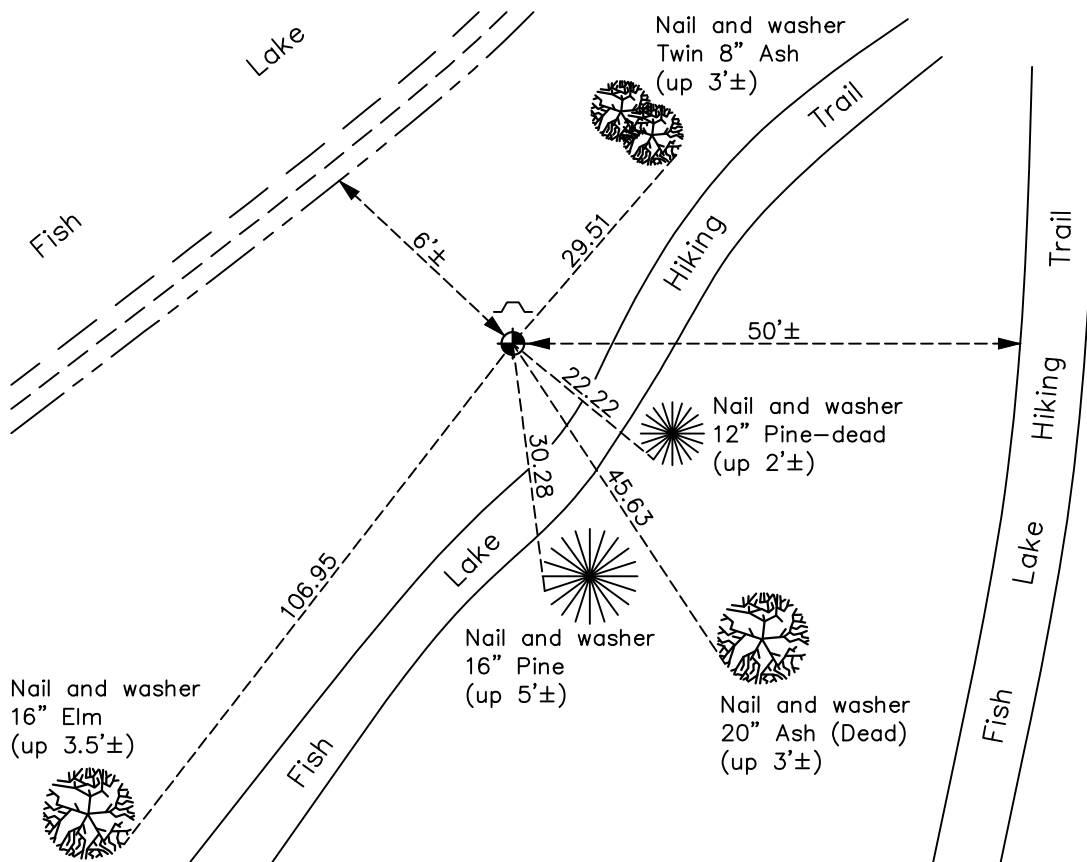
(on west line of NW 1/4)

On the 5th day of October, 1978, the described corner was evidenced by found 1 1/4"
iron rod from area resurvey

and to perpetuate the location of said corner, at the exact location thereof, a permanent marker was placed consisting of a cast iron monument

AND on the 29th day of October, 2021, said permanent marker was found down 0.2'± with
a sign and post on the north side and the ties were updated

Updated reference ties are as shown below.



N.A.D. 1983 Coordinates
(1996 Adjustment)

County Project Coordinates	
Northing	<u>232277.8956</u>
Easting	<u>526621.0034</u>
Date	<u>4/07/03</u>

I hereby certify that this United States public land survey monument record is correct and complete to the best of my knowledge and belief.

David Zieglmeier Date 2/8/23

David M. Zieglmeier, Anoka County Surveyor
Minnesota License Number 46179

Revision Date
01/19/2022

HISTORY OF GOVERNMENT CORNER

Page No. 90A

County of Anoka

State of Minnesota

Witness Corner of Sec. 36 Township 34 Range 23

CORNER HISTORY:

October 5, 1978 - Found 1 1/4" iron rod from area resurvey and replaced with a cast iron monument flush. Established ties to monument.

June 10, 1982 - Found cast iron monument and updated ties.

August 8, 1986 - Found cast iron monument and updated ties.

August 21, 1992 - Found cast iron monument and updated ties.

August 9, 1997 - Found cast iron monument and updated ties.

April 7, 2003 - Established NAD 1983 (1996 adj.) Anoka County project coordinates by static GPS methods.

April 24, 2012 - Found cast iron monument. Verified position by VRS GPS methods. Updated ties.

April 4, 2018 - Found cast iron monument down 0.1'±. Verified position by VRS GPS methods. Updated ties.

October 29, 2021 - Found cast iron monument down 0.2'±. Verified position by VRS GPS methods. Updated ties.