

CERTIFICATE OF LOCATION OF GOVERNMENT CORNER

County of Anoka

State of Minnesota

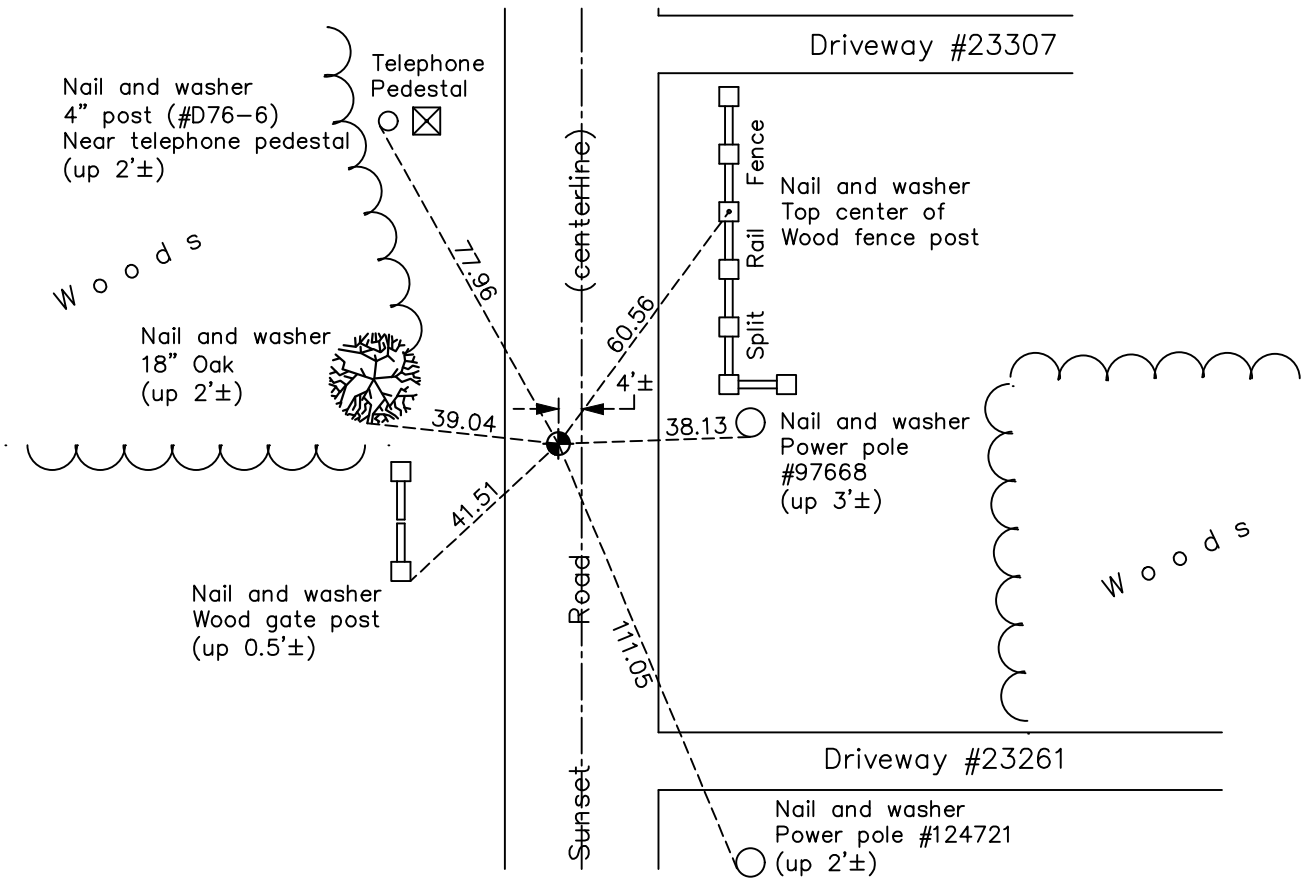
East 1/4 Corner of Sec. 36 Township 34 Range 23

On the 16th day of August, 1971, the described corner was evidenced by a 3/4" iron pipe

and to perpetuate the location of said corner, at the exact location thereof, a permanent marker was placed consisting of a cast iron monument

AND on the 5th day of November, 2021, said permanent marker was found flush and
the ties were updated

Updated reference ties are as shown below.



N

S

Revision Date

01/19/2022

N.A.D. 1983 Coordinates
(1996 Adjustment)

County Project Coordinates	
Northing	<u>230196.5590</u>
Easting	<u>531980.3971</u>
Date	<u>5/22/02</u>

I hereby certify that this United States public land survey monument record is correct and complete to the best of my knowledge and belief.

David Zieglermeier Date 2/8/23

David M. Zieglermeier, Anoka County Surveyor
 Minnesota License Number 46179

HISTORY OF GOVERNMENT CORNER

Page No. 91

County of Anoka

State of Minnesota

East 1/4 Corner of Sec. 36 Township 34 Range 23

CORNER HISTORY:

July 27, 1962 - Found 3/4" iron pipe down 0.4' set by Minder Eng. Co. and established ties to iron pipe.

June 22, 1967 - Found 3/4" iron pipe down 0.3'± and updated ties.

August 16, 1971 - Replaced 3/4" iron pipe with a cast iron monument down 0.6'± using ties. Updated ties.

August 8, 1975 - Found cast iron monument and updated ties.

August 21, 1978 - Found cast iron monument and updated ties.

May 26, 1982 - Found cast iron monument and updated ties.

July 5, 1986 - Found cast iron monument and updated ties.

August 5, 1992 - Found cast iron monument and updated ties.

October 28, 1993 - Set cast iron monument after construction and updated ties.

August 11, 1997 - Found cast iron monument and updated ties.

May 22, 2002 - Found cast iron monument and updated ties. Established NAD 1983 (1996 adj.) Anoka County project coordinates by static GPS methods.

April 27, 2012 - Found cast iron monument. Verified position by VRS GPS methods. Updated ties.

April 2, 2018 - Found cast iron monument down 0.2'±. Verified position by VRS GPS methods. Updated ties.

November 5, 2021 - Found cast iron monument flush. Verified position by VRS GPS methods. Updated ties.