

CERTIFICATE OF LOCATION OF GOVERNMENT CORNER

County of Anoka

State of Minnesota

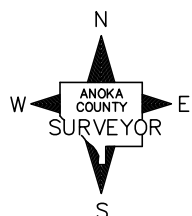
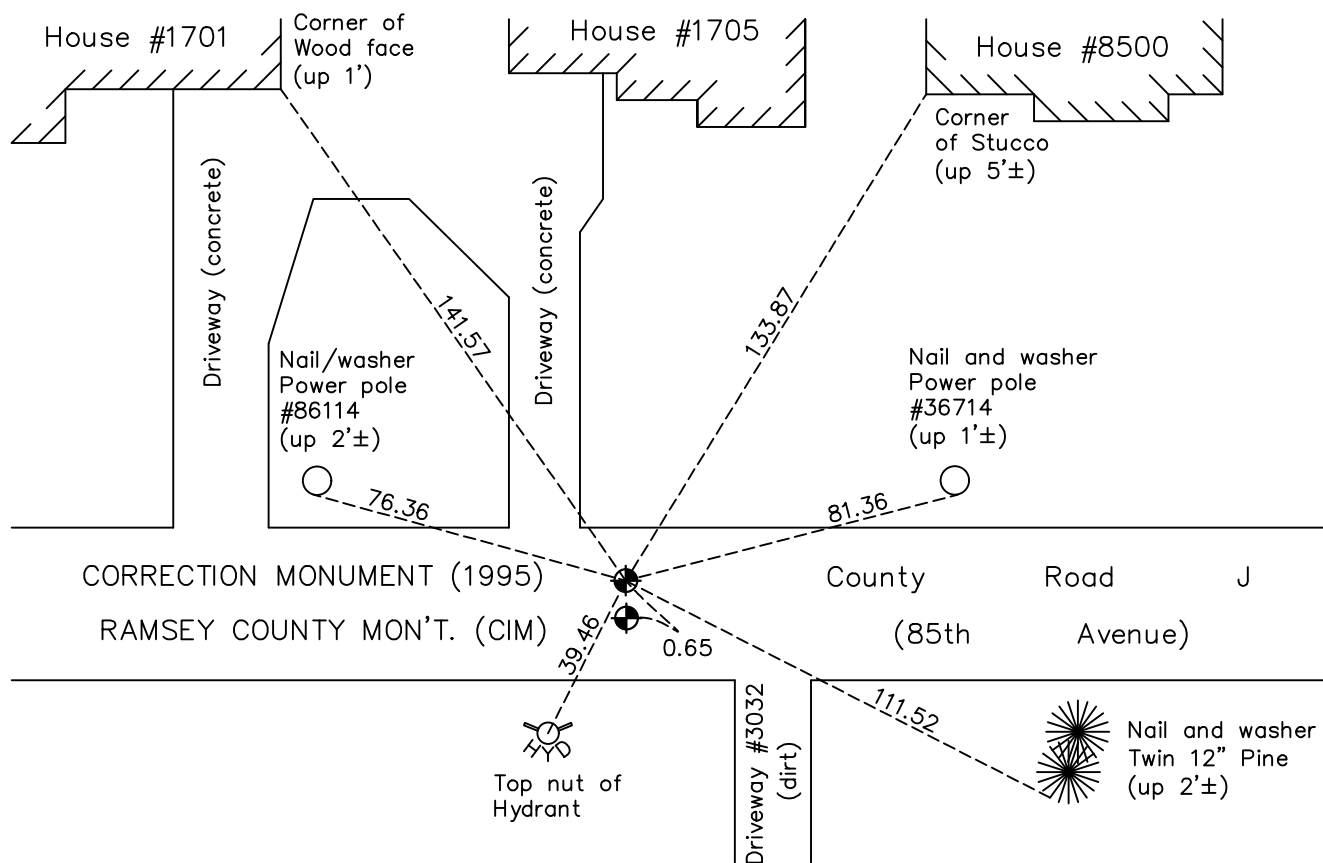
Northeast Corner of Sec. 1 Township 30 Range 24

On the 19th day of April, 1963, the described corner was evidenced by a granite monument

and to perpetuate the location of said corner, at the exact location thereof, a permanent marker was placed consisting of a cast iron monument (CORRECTION MONUMENT 1995)

AND on the 19th day of November, 2019, said permanent marker was found and the ties were updated

Updated reference ties are as shown below.



Revision Date

6/19/20

N.A.D. 1983 Coordinates
(1996 Adjustment)

| County Project Coordinates | |
|----------------------------|--------------------|
| Northing | <u>132544.9391</u> |
| Easting | <u>510061.7899</u> |
| Date | <u>11/18/03</u> |

I hereby certify that this United States public land survey monument record is correct and complete to the best of my knowledge and belief.

David M Zieglmeier Date 8/4/21

David Zieglmeier Anoka County Surveyor
Minnesota License Number 46179

HISTORY OF GOVERNMENT CORNER

Page No. 1

County of Anoka

State of Minnesota

Northeast Corner of Sec. 1 Township 30 Range 24

CORNER HISTORY:

April 2, 1943 - Found 8" x 8" Township granite monument down 4" in road. Updated ties.

April 19, 1963 - Found 8" x 8" Township granite monument down 0.3' in blacktop road. Updated ties.

July 7, 1966 - Found 8" x 8" Township granite monument and updated ties.

August 14, 1970 - Found 8" x 8" Township granite monument and updated ties.

June 20, 1974 - Found 8" x 8" Township granite monument and updated ties.

July 27, 1977 - Found 8" x 8" Township granite monument and updated ties.

July 22, 1980 - Found 8" x 8" Township granite monument and updated ties.

June 24, 1986 - Found cast iron monument (1995 correction monument) and updated ties.

July 12, 1989 - Found cast iron monument (1995 correction monument) flush in road. Updated ties.

July 22, 1994 - Found cast iron monument (1995 correction monument) and updated ties.

February 2, 2000 - Found cast iron monument (1995 correction monument). Shot GPS and updated ties.

November 18, 2003 - Established NAD 1983 (1996 adj.) Anoka County project coordinates by static GPS methods.

August 18, 2008 - Found cast iron monument (1995 correction monument) and updated ties.

November 17, 2014 - Found cast iron monument (1995 correction monument). Verified position by VRS GPS methods. Updated ties.

November 19, 2019 - Found cast iron monument (1995 correction monument). Verified position by VRS GPS methods. Updated ties.