

CERTIFICATE OF LOCATION OF GOVERNMENT CORNER

County of Anoka

State of Minnesota

Meander Corner of Sec. 1 Township 30 Range 24

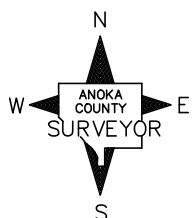
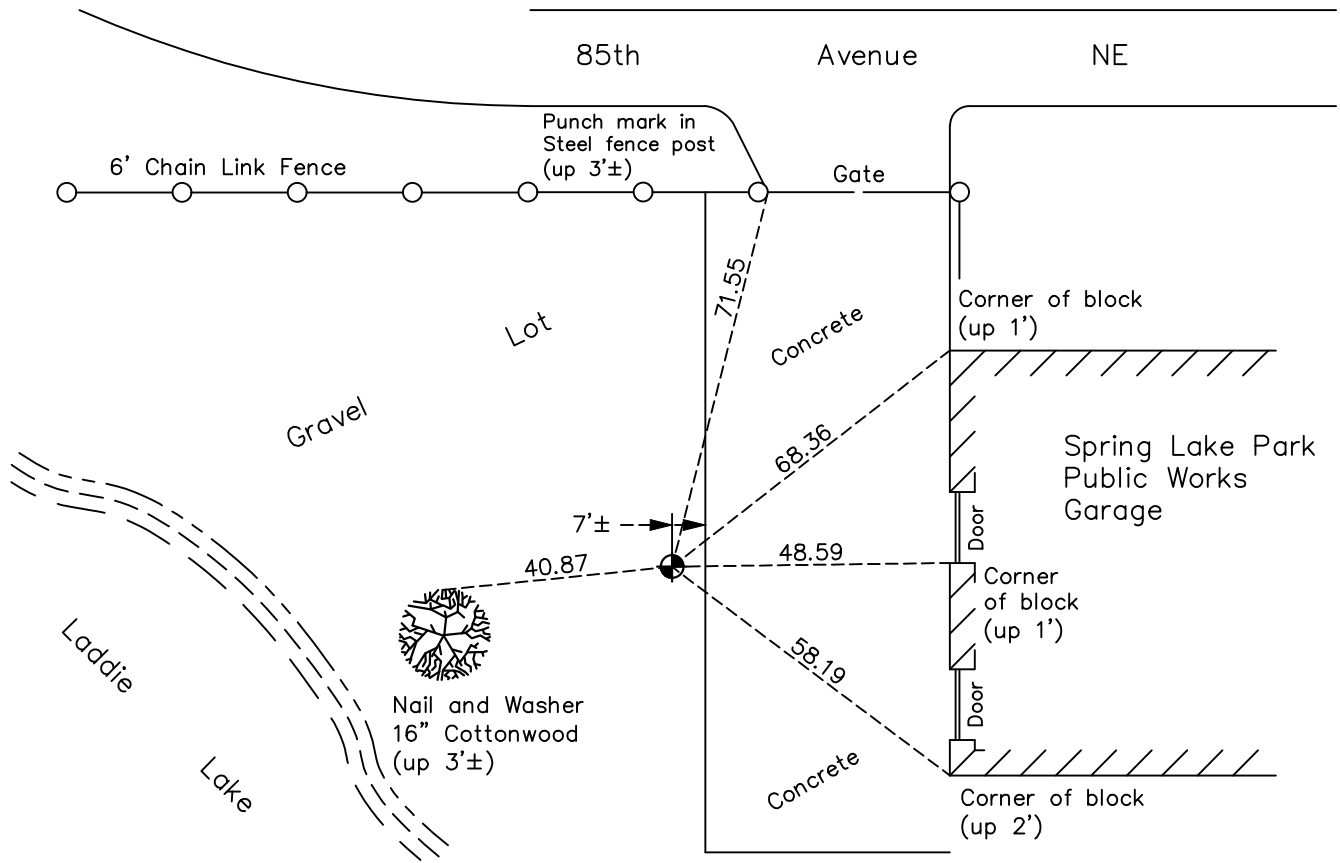
(Meander Corner #13—east side of Laddie Lake)

On the 5th day of April, 1945, the described corner was evidenced by a concrete monument

and to perpetuate the location of said corner, at the exact location thereof, a permanent marker was placed consisting of a cast iron monument

AND on the 18th day of August, 2022, said permanent marker was found down 0.5'± and the ties were updated

Updated reference ties are as shown below.



Revision Date
12/21/22

N.A.D. 1983 Coordinates
(1996 Adjustment)

County Project Coordinates	
Northing	<u>132556.9072</u>
Easting	<u>507474.2054</u>
Date	<u>N/A</u>

I hereby certify that this United States public land survey monument record is correct and complete to the best of my knowledge and belief.

David Zieglmeier Date 12/11/23

David Zieglmeier Anoka County Surveyor
 Minnesota License Number 46179

HISTORY OF GOVERNMENT CORNER

Page No. 2

County of Anoka

State of Minnesota

Meander Corner of Sec. 1 Township 30 Range 24

(Meander Corner #13—east side of Laddie Lake)

CORNER HISTORY:

April 5, 1945 - Found an iron stake and replaced with a concrete monument up 0.2'. Updated ties to monument.

June 27, 1960 - Found concrete monument broken off and down 1'± with a pinched iron pipe on the North side. Updated ties.

July 31, 1964 - Found concrete monument buried. Set 1/2" iron pipe using three remaining corner ties. Updated ties to iron pipe.

July 7, 1966 - Found 1/2" iron pipe and updated ties.

August 14, 1970 - Found iron pipe missing. Set bridge spike using corner ties. Updated ties to spike.

June 20, 1974 - Found bridge spike and updated ties.

July 27, 1977 - Found bridge spike and updated ties.

July 22, 1980 - Found bridge spike and updated ties.

October 18, 1985 - Set cast iron monument on site of removed concrete monument. Updated ties.

July 12, 1989 - Found cast iron monument and updated ties.

August 2, 1994 - Found cast iron monument and updated ties.

February 2, 2000 - Found cast iron monument and updated ties.

August 18, 2008 - Found cast iron monument and updated ties.

November 21, 2014 - Found cast iron monument down 0.5'±. Verified position by VRS GPS methods. Updated ties.

November 19, 2019 - Found cast iron monument down 0.5'±. Verified position by VRS GPS methods. Updated ties.

August 18, 2022 - Found cast iron monument down 0.5'±. Verified position by VRS GPS methods. Updated ties.