

CERTIFICATE OF LOCATION OF GOVERNMENT CORNER

County of Anoka

State of Minnesota

Meander Corner of Sec. 1 Township 30 Range 24

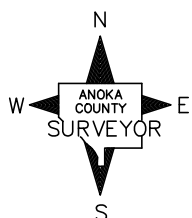
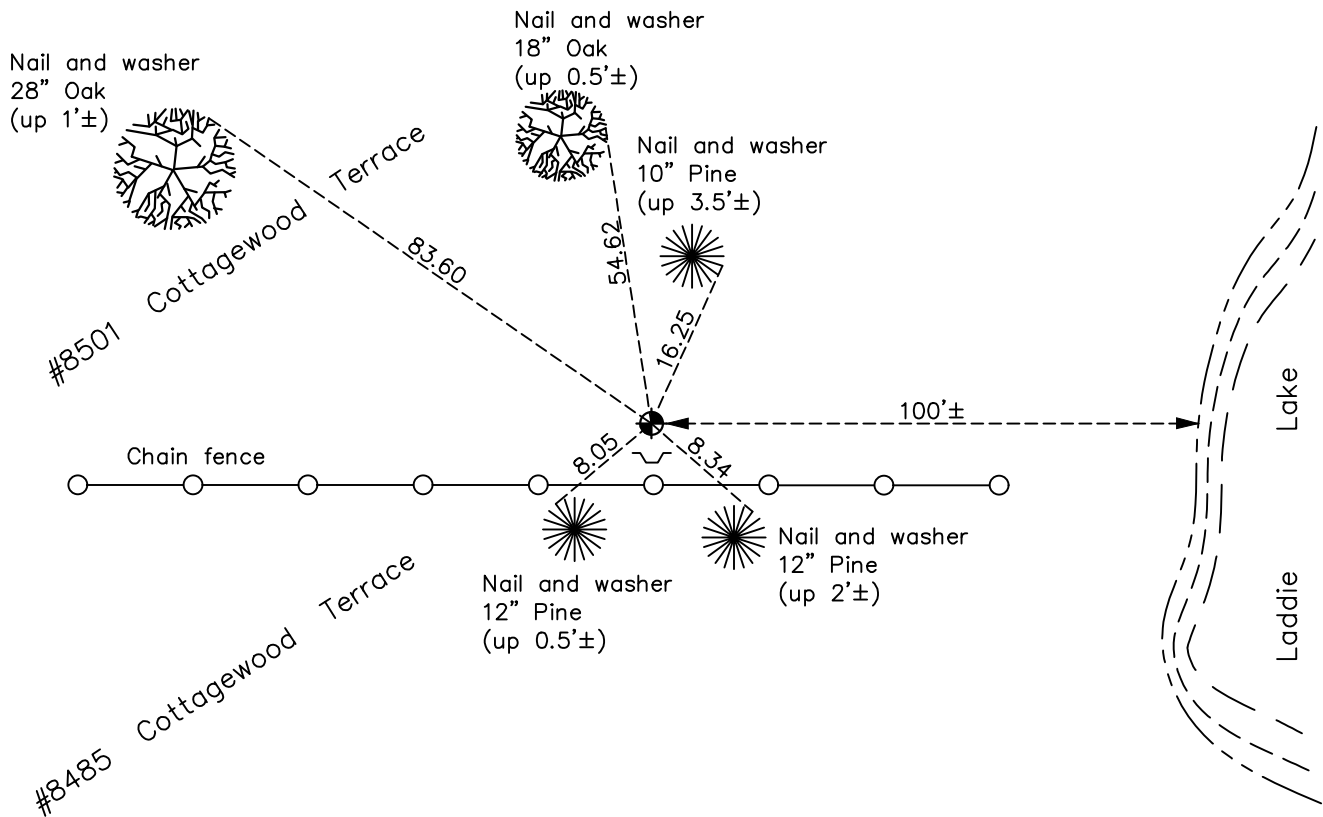
(on west side of Laddie Lake)

On the 27th day of June, 1960, the described corner was evidenced by a concrete monument

and to perpetuate the location of said corner, at the exact location thereof, a permanent marker was placed consisting of a cast iron monument with a sign and post on the south side

AND on the 5th day of August, 2022, said permanent marker was found down 0.5'± and the ties were updated.

Updated reference ties are as shown below.



Revision Date
12/21/22

N.A.D. 1983 Coordinates
 (1996 Adjustment)

County Project Coordinates	
Northing	<u>132550.2298</u>
Easting	<u>505946.4223</u>
Date	<u>N/A</u>

I hereby certify that this United States public land survey monument record is correct and complete to the best of my knowledge and belief.

David Zieglmeier Date 12/11/23

David Zieglmeier Anoka County Surveyor
 Minnesota License Number 46179

HISTORY OF GOVERNMENT CORNER

Page No. 3

County of Anoka

State of Minnesota

Meander Corner of Sec. 1 Township 30 Range 24
(on west side of Laddie Lake)

CORNER HISTORY:

June 27, 1960 - Found concrete monument down 0.5'± and updated ties.

July 6, 1966 - Found concrete monument down 1'± with a 1/2" iron pipe on the North side. Updated ties.

August 14, 1970 - Found concrete monument and updated ties.

June 20, 1974 - Found concrete monument and replaced with a cast iron monument down 0.1'±. Set sign and post on South side. Updated ties.

July 27, 1977 - Found cast iron monument and updated ties.

July 22, 1980 - Found cast iron monument and updated ties.

July 13, 1989 - Found cast iron monument and updated ties.

February 2, 2000 - Found cast iron monument. Shot GPS and updated ties.

August 18, 2008 - Found cast iron monument and updated ties.

November 21, 2014 - Found cast iron monument and updated ties.

November 19, 2019 - Found cast iron monument down 0.5'± and updated ties.

August 5, 2022 - Found cast iron monument down 0.5'±. Verified position by VRS GPS methods. updated ties.