

CERTIFICATE OF LOCATION OF GOVERNMENT CORNER

County of Anoka

State of Minnesota

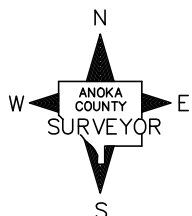
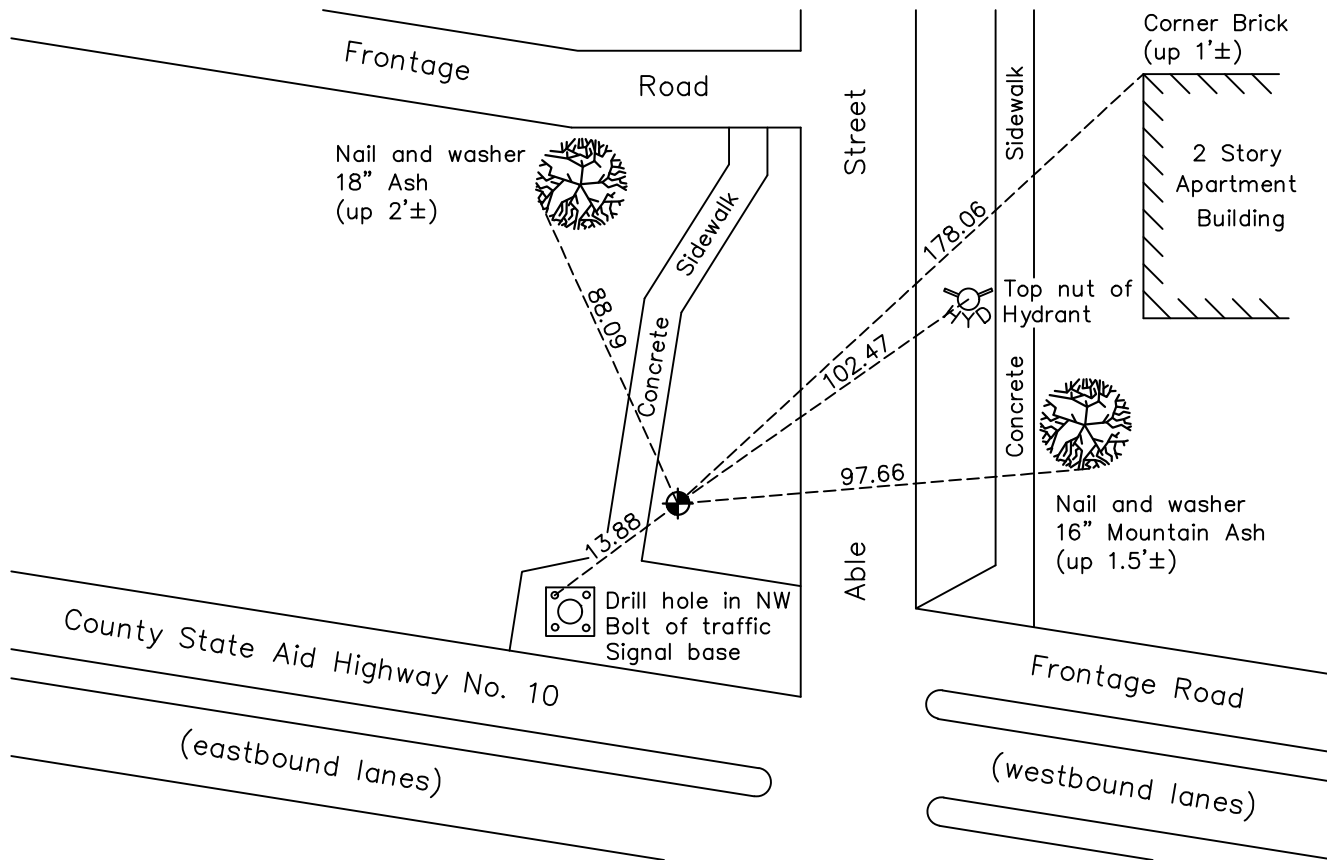
Northwest Corner of Sec. 1 Township 30 Range 24

On the 21st day of June, 1960, the described corner was evidenced by a concrete monument set by Harvey Cartwright

and to perpetuate the location of said corner, at the exact location thereof, a permanent marker was placed consisting of a cast iron monument set on top of the concrete monument

AND on the 5th day of August, 2022, said permanent marker was found down 0.2'± and the ties were updated

Updated reference ties are as shown below.



Revision Date
12/21/22

N.A.D. 1983 Coordinates
 (1996 Adjustment)

County Project Coordinates	
Northing	<u>132544.0385</u>
Easting	<u>504688.5620</u>
Date	<u>8/13/03</u>

I hereby certify that this United States public land survey monument record is correct and complete to the best of my knowledge and belief.
David Zieglmeier Date 12/11/23
 David Zieglmeier Anoka County Surveyor
 Minnesota License Number 46179

HISTORY OF GOVERNMENT CORNER

Page No. 4

County of Anoka

State of Minnesota

Northwest Corner of Sec. 1 Township 30 Range 24

CORNER HISTORY:

August 21, 1943 - Harvey Cartwright set a concrete monument down 2" and established ties to monument.

June 21, 1960 - Found concrete monument down 0.1' with iron on south side. Updated ties.

April 29, 1964 - Found concrete monument down 1'±. Set cast iron monument on top of concrete flush with blacktop road. Updated ties.

July 7, 1966 - Set top on cast iron monument. Updated ties.

August 14, 1970 - Found cast iron monument and updated ties.

June 20, 1974 - Found cast iron monument and updated ties.

July 27, 1977 - Found cast iron monument and updated ties.

July 11, 1980 - Found cast iron monument and updated ties.

October 22, 1985 - Found cast iron monument broken. Reset new cast iron monument centered over concrete monument below. Updated ties.

June 27, 1989 - Found cast iron monument and updated ties.

October 4, 1991 - Found cast iron monument broken. Reset new cast iron monument centered over concrete monument below. Set sign and post on North side. Updated ties.

August 2, 1994 - Found cast iron monument and updated ties.

July 28, 1997 - Reset cast iron monument in concrete sidewalk, over concrete monument below. Updated ties.

February 2, 2000 - Found cast iron monument and updated ties.

August 15, 2008 - Found cast iron monument and updated ties.

August 13, 2003 - Established NAD 1983 (1996 adj.) Anoka County project coordinates by static GPS methods.

June 25, 2010 - Found cast iron monument missing after construction.

October 11, 2010 - Set solid cast iron monument down 0.3'±. Verified position with static GPS methods.

October 20, 2010 - Moved cast iron monument using static GPS methods. Updated ties.

November 17, 2014 - Found cast iron monument down 0.3'±. Verified position by VRS GPS methods. Updated ties.

November 19, 2019 - Found cast iron monument down 0.3'±. Verified position by VRS GPS methods. Updated ties.

August 5, 2022 - Found cast iron monument down 0.3'±. Verified position by VRS GPS methods. Updated ties.