

CERTIFICATE OF LOCATION OF GOVERNMENT CORNER

County of Anoka

State of Minnesota

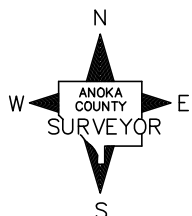
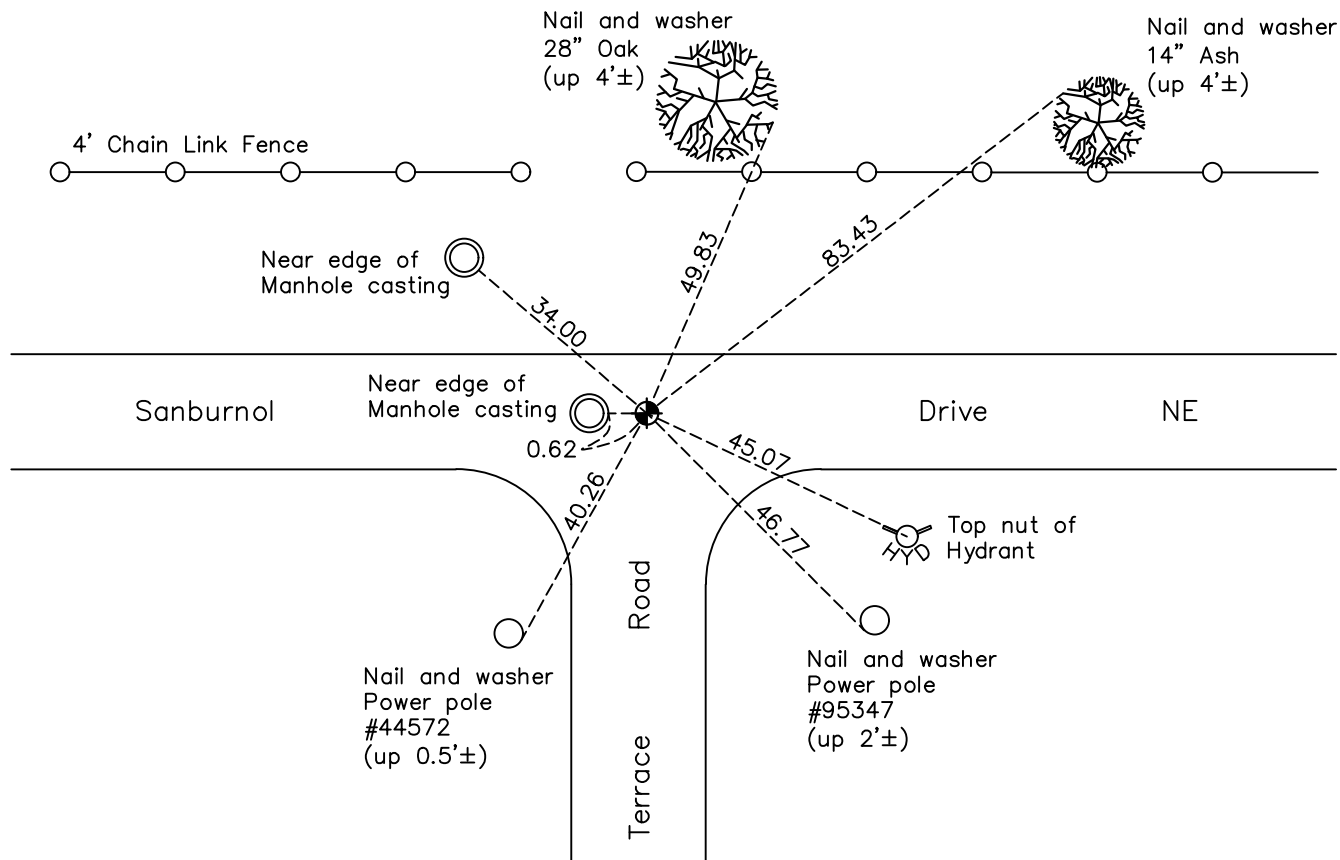
North 1/4 Corner of Sec. 2 Township 30 Range 24

On the 28th day of June, 1960, the described corner was evidenced by a concrete monument

and to perpetuate the location of said corner, at the exact location thereof, a permanent marker was placed consisting of a cast iron monument

AND on the 4th day of August, 2022, said permanent marker was found flush with the surface and the ties were updated.

Updated reference ties are as shown below.



Revision Date
12/21/22

N.A.D. 1983 Coordinates
 (1996 Adjustment)

County Project Coordinates	
Northing	<u>132550.4796</u>
Easting	<u>502067.1466</u>
Date	<u>7/01/04</u>

I hereby certify that this United States public land survey monument record is correct and complete to the best of my knowledge and belief.

David Zieglmeier Date 12/11/23

David Zieglmeier Anoka County Surveyor
 Minnesota License Number 46179

HISTORY OF GOVERNMENT CORNER

County of Anoka

State of Minnesota

North 1/4 Corner of Sec. 2 Township 30 Range 24

CORNER HISTORY:

September 4, 1943 - Harvey Cartwright found a 1-1/2" x 4' iron pipe and set a concrete monument flush. Updated ties to concrete monument.

June 28, 1960 - Found concrete monument down 2'± with a bent fence post on the North side. Updated ties.

May 11, 1964 - Found concrete monument and updated ties.

June 9, 1966 - Set cast iron monument and updated ties.

July 8, 1966 - Found cast iron monument and updated ties.

August 14, 1970 - Found cast iron monument and updated ties.

June 20, 1974 - Found cast iron monument and updated ties.

July 27, 1977 - Found cast iron monument and updated ties.

July 11, 1980 - Found cast iron monument and updated ties.

June 24, 1986 - Found cast iron monument and updated ties.

June 27, 1989 - Found cast iron monument and updated ties.

July 27, 1994 - Found cast iron monument and updated ties.

February 3, 2000 - Found cast iron monument and updated ties.

July 1, 2004 - Established NAD 1983 (1996 adj.) Anoka County project coordinates by static GPS methods.

August 15, 2008 - Found cast iron monument and updated ties.

November 25, 2014 - Found cast iron monument under blacktop. Raised flush and updated ties.

November 19, 2019 - Found cast iron monument flush. Verified position by VRS GPS methods. Updated ties.

August 4, 2022 - Found cast iron monument flush. Verified position by VRS GPS methods. Updated ties.