

# CERTIFICATE OF LOCATION OF GOVERNMENT CORNER

County of Anoka

State of Minnesota

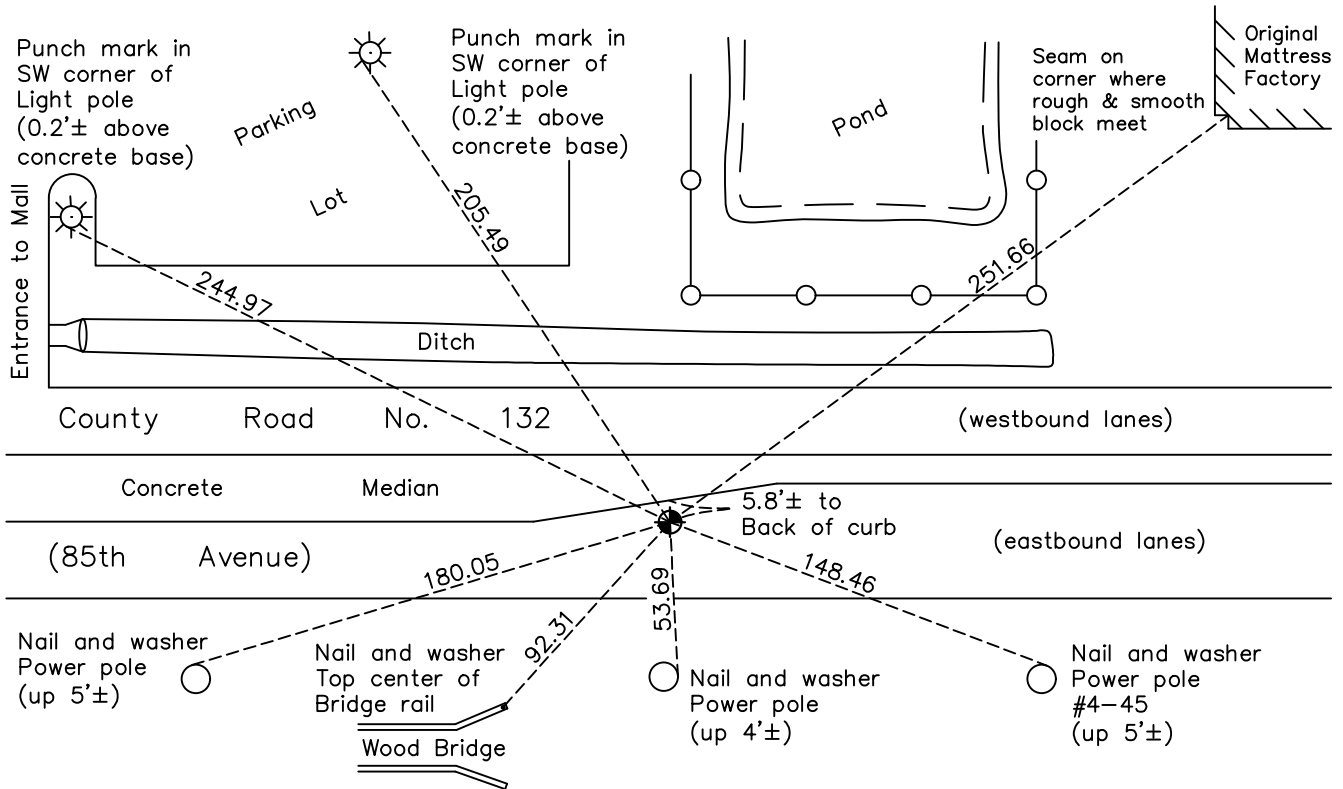
## Northwest Corner of Sec. 2 Township 30 Range 24

On the 20th day of August, 1969, the described corner was evidenced by area resurvey

and to perpetuate the location of said corner, at the exact location thereof, a permanent marker was placed consisting of a cast iron monument

AND on the 18th day of August, 2022, said permanent marker was found and the ties  
were updated

Updated reference ties are as shown below.



Revision Date  
12/21/22

N.A.D. 1983 Coordinates  
(1996 Adjustment)

County Project Coordinates	
Northing	132549.8975
Easting	499446.2809
Date	7/01/04

I hereby certify that this United States public land survey monument record is correct and complete to the best of my knowledge and belief.

*David Zieglmeier* Date 12/11/23

David Zieglmeier Anoka County Surveyor  
Minnesota License Number 46179

# HISTORY OF GOVERNMENT CORNER

Page No. 6

County of Anoka

State of Minnesota

## Northwest Corner of Sec. 2 Township 30 Range 24

### **CORNER HISTORY:**

March 22, 1963 - Set 1" x 9' red and white iron pipe up 3.5' using area resurvey. Established ties to iron pipe.

July 7, 1966 - Found red and white iron pipe and updated ties.

August 20, 1969 - Set cast iron monument flush after road construction using area resurvey. Updated ties.

May 10, 1973 - Found cast iron monument and updated ties.

June 20, 1974 - Found cast iron monument and updated ties.

August 16, 1976 - Found cast iron monument and updated ties.

July 27, 1977 - Found cast iron monument and updated ties.

October 12, 1981 - Found cast iron monument. Set construction ties and updated corner ties prior to road construction.

June 8, 1982 - Set cast iron monument flush after road construction. Updated ties.

June 24, 1986 - Found cast iron monument and updated ties.

June 27, 1989 - Found cast iron monument and updated ties.

July 29, 1994 - Found cast iron monument and updated ties.

July 1, 2004 - Established NAD 1983 (1996 adj.) Anoka County project coordinates by static GPS methods.

August 15, 2008 - Found cast iron monument and updated ties.

October 5, 2010 - Found cast iron monument missing due to construction. Set temporary P.K. nail and checked corner ties.

October 21, 2010 - Set cast iron monument flush using static GPS methods. Updated ties.

November 20, 2014 - Found cast iron monument. Verified position by VRS GPS methods. Updated ties.

November 19, 2019 - Found cast iron monument. Verified position by VRS GPS methods. Updated ties.

August 18, 2022 - Found cast iron monument. Verified position by VRS GPS methods. Updated ties.