

CERTIFICATE OF LOCATION OF GOVERNMENT CORNER

County of Anoka

State of Minnesota

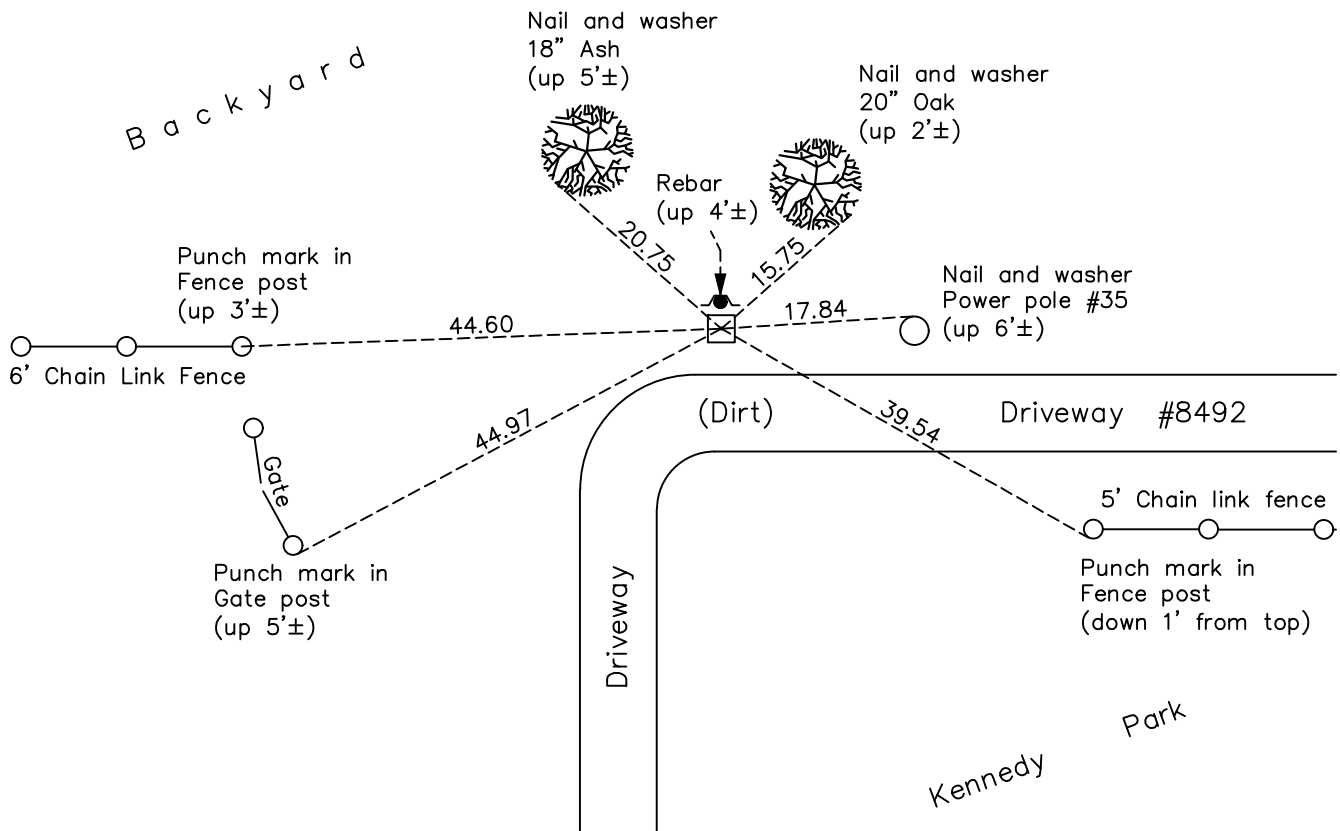
Northwest Corner of Sec. 3 Township 30 Range 24

On the 10th day of April, 1943, the described corner was evidenced by a granite monument

and to perpetuate the location of said corner, at the exact location thereof, a permanent marker was placed consisting of the same granite monument

AND on the 11th day of August, 2022, said permanent marker was found flush and the ties were updated

Updated reference ties are as shown below.



Revision Date
12/21/22

N.A.D. 1983 Coordinates
(1996 Adjustment)

County Project Coordinates	
Northing	<u>132472.4087</u>
Easting	<u>494124.5336</u>
Date	<u>12/15/04</u>

I hereby certify that this United States public land survey monument record is correct and complete to the best of my knowledge and belief.

David Zieglmeier Date 12/11/23

David Zieglmeier Anoka County Surveyor
Minnesota License Number 46179

HISTORY OF GOVERNMENT CORNER

Page No. 8

County of Anoka

State of Minnesota

Northwest Corner of Sec. 3 Township 30 Range 24

CORNER HISTORY:

April 10, 1943 - Found 8" x 8" granite monument up 4" by Harvey Cartwright. Updated ties.

June 29, 1960 - Found 8" x 8" granite monument up 0.3'± with an iron on the North side. Updated ties.

May 14, 1964 - Found granite monument and updated ties.

July 7, 1966 - Found granite monument and updated ties.

August 20, 1970 - Found granite monument and updated ties.

June 21, 1974 - Found granite monument and updated ties.

July 28, 1977 - Found granite monument and updated ties.

July 15, 1980 - Found granite monument and updated ties.

August 8, 1989 - Found granite monument and updated ties.

August 3, 1994 - Found granite monument and updated ties.

December 15, 2004 - Established NAD 1983 (1996 adj.) Anoka County project coordinates by static GPS methods.

August 18, 2008 - Found granite monument and updated ties.

November 20, 2014 - Found granite monument and updated ties.

November 19, 2019 - Found granite monument. Verified position by VRS GPS methods. Updated ties.

August 11, 2022 - Found granite monument flush and updated ties.