

CERTIFICATE OF LOCATION OF GOVERNMENT CORNER

County of Anoka

State of Minnesota

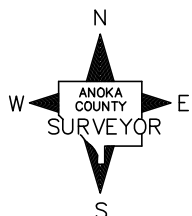
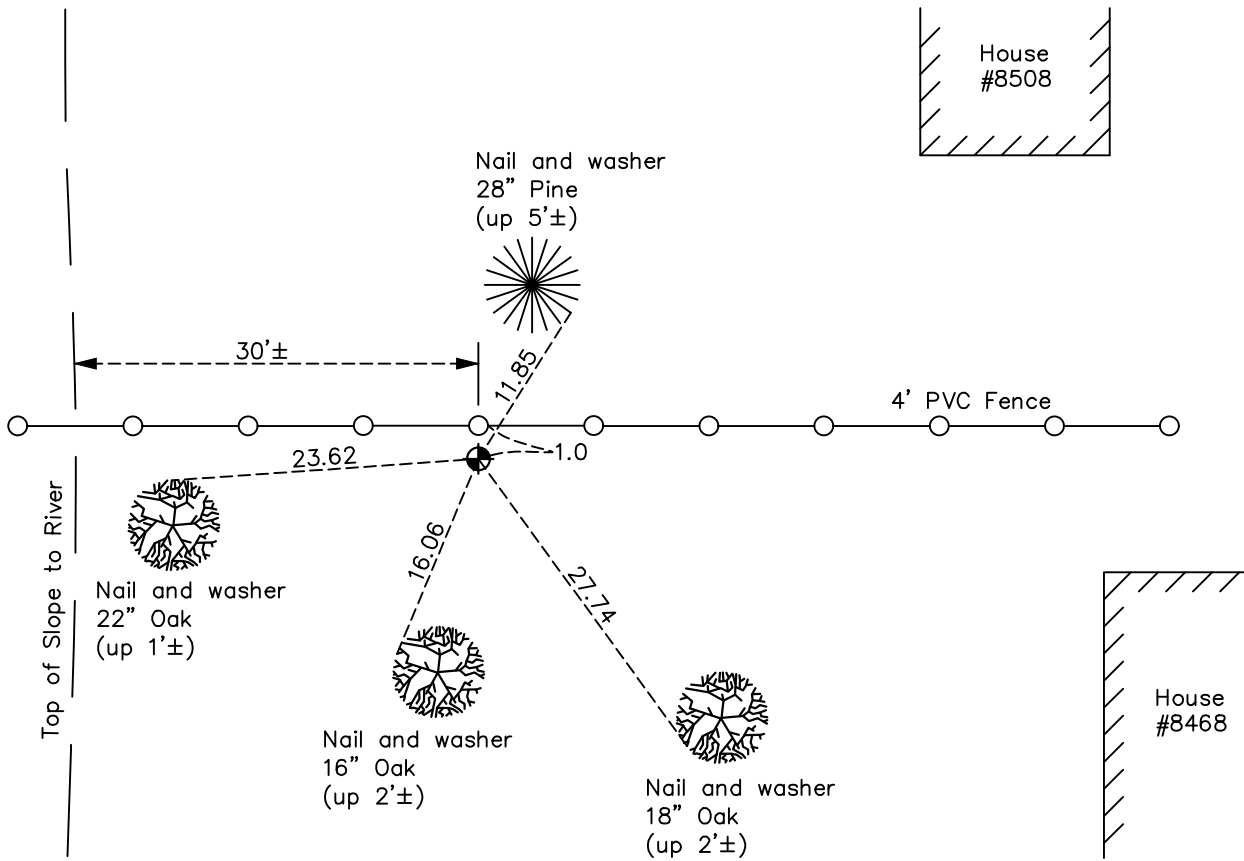
Witness Corner of Sec. 4 Township 30 Range 24
(Witness Corner No. 8)

On the 7th day of July, 1966, the described corner was evidenced by a concrete
monument

and to perpetuate the location of said corner, at the exact location thereof, a permanent marker
was placed consisting of a cast iron monument

AND on the 11th day of August, 2022, said permanent marker was found down 0.1'± and
the ties were updated

Updated reference ties are as shown below.



Revision Date
12/21/22

N.A.D. 1983 Coordinates
(1996 Adjustment)

County Project Coordinates	
Northing	<u>132450.0115</u>
Easting	<u>492658.3969</u>
Date	<u>12/15/04</u>

I hereby certify that this United States public land survey monument record is correct and complete to the best of my knowledge and belief.
David Zieglmeier Date 12/11/23
David Zieglmeier Anoka County Surveyor
Minnesota License Number 46179

HISTORY OF GOVERNMENT CORNER

Page No. 9

County of Anoka

State of Minnesota

Witness Corner of Sec. 4 Township 30 Range 24
(Witness Corner No. 8)

CORNER HISTORY:

June 29, 1960 - Found concrete monument up 0.3' with an iron on the North side. Updated ties.

May 14, 1964 - Found concrete monument and updated ties.

July 7, 1966 - Found concrete monument and updated ties.

August 20, 1970 - Found concrete monument up 0.1± and updated ties.

June 24, 1974 - Found concrete monument and replaced with a cast iron monument. Updated ties.

July 28, 1977 - Found cast iron monument and updated ties.

July 15, 1980 - Found cast iron monument flush and updated ties.

February 23, 1981 - Found cast iron monument and updated ties.

June 27, 1989 - Found cast iron monument and updated ties.

August 3, 1994 - Found cast iron monument and updated ties.

December 15, 2004 - Established NAD 1983 (1996 adj.) Anoka County project coordinates by static GPS methods.

October 9, 2008 - Found cast iron monument and updated ties.

November 20, 2014 - Found cast iron monument down 0.1± and updated ties.

November 19, 2019 - Found cast iron monument down 0.1± and updated ties.

August 11, 2022 - Found cast iron monument. Verified position by VRS GPS methods. Updated ties.