

CERTIFICATE OF LOCATION OF GOVERNMENT CORNER

County of Anoka

State of Minnesota

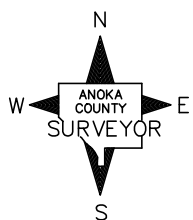
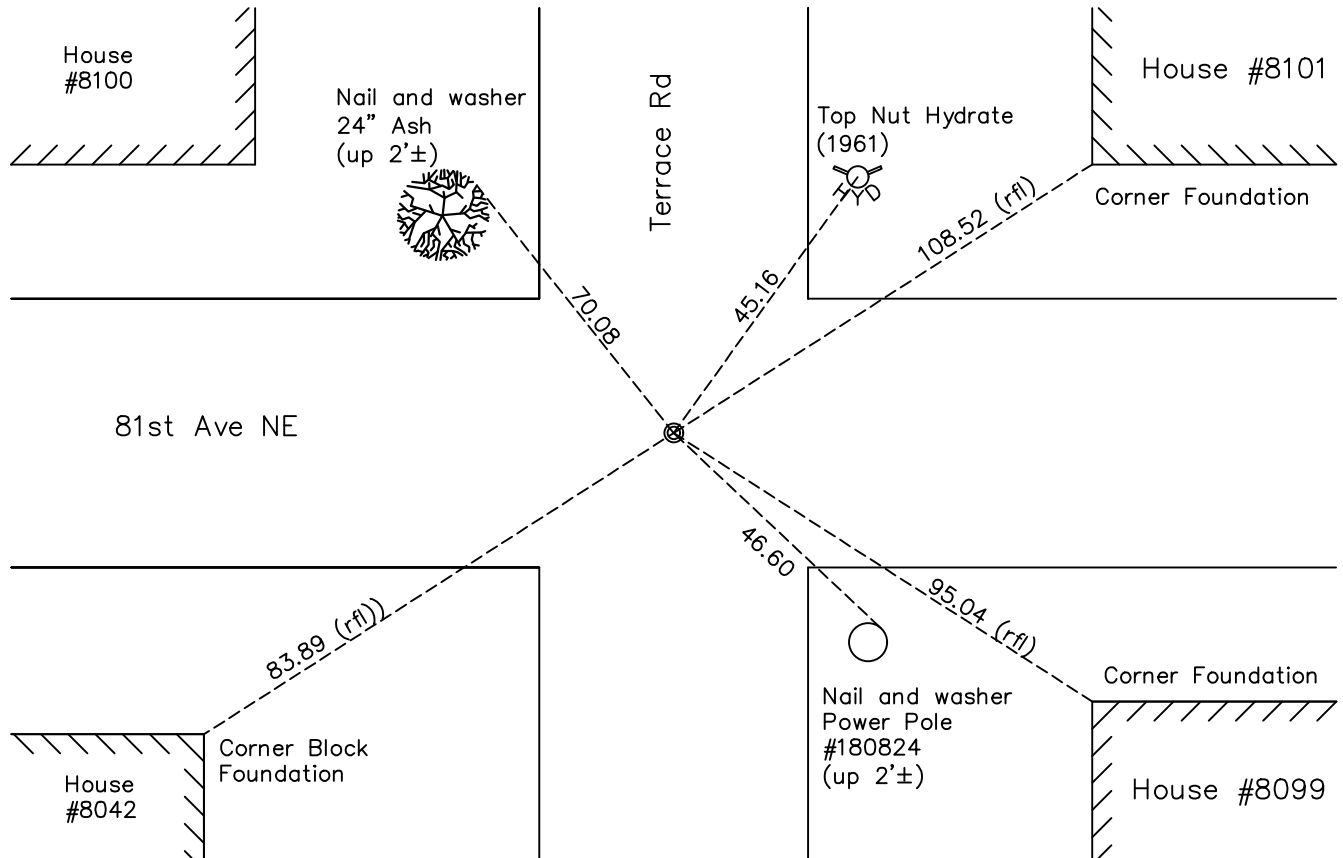
Center Corner of Sec. 2 Township 30 Range 24

On the 15th day of September, 1966, the described corner was evidenced by 1/2" Pinched
Top Iron Pipe

and to perpetuate the location of said corner, at the exact location thereof, a permanent marker
was placed consisting of 3/4" Iron Pipe

AND on the 24th day of August, 2023, said permanent marker was reset with a 1/2" X 2'
rebar with Aluminum cap and punchmark and the ties were re-established

Updated reference ties are as shown below.



N.A.D. 1983 Coordinates
(2011 Adjustment)

County Project Coordinates	
Northing	<u>129118.548</u>
Easting	<u>502077.009</u>
Date	<u>08/24/2023</u>

Revision Date
8/28/2023

I hereby certify that this United States public land survey monument record is correct and complete to the best of my knowledge and belief.

David Zieglmeier Date 12/11/23

David M. Zieglmeier, Anoka County Surveyor
Minnesota License Number 46179

HISTORY OF GOVERNMENT CORNER

Page No. 12A

County of Anoka

State of Minnesota

Center Corner of Sec. 2 Township 30 Range 24

CORNER HISTORY:

January 31, 1958 - Found 1/2" pinched top iron and the ties were updated noting accuracy of Iron Pipe unknown

July 24, 1964 - Tie Check

November 16, 1965 - Tie Check

September 15, 1966 - Set 3/4" Iron Pipe using historical ties

June 24, 1974 - Tie Check

July 28, 1977 - Tie Chck

July 11, 1980 - Tie Check

August 24, 2023 - Center position was reset with a 1/2" X 2' rebar with Aluminum cap and punch mark set flush using RTK GPS method. Re-established ties to the Center monument.