

CERTIFICATE OF LOCATION OF GOVERNMENT CORNER

County of Anoka

State of Minnesota

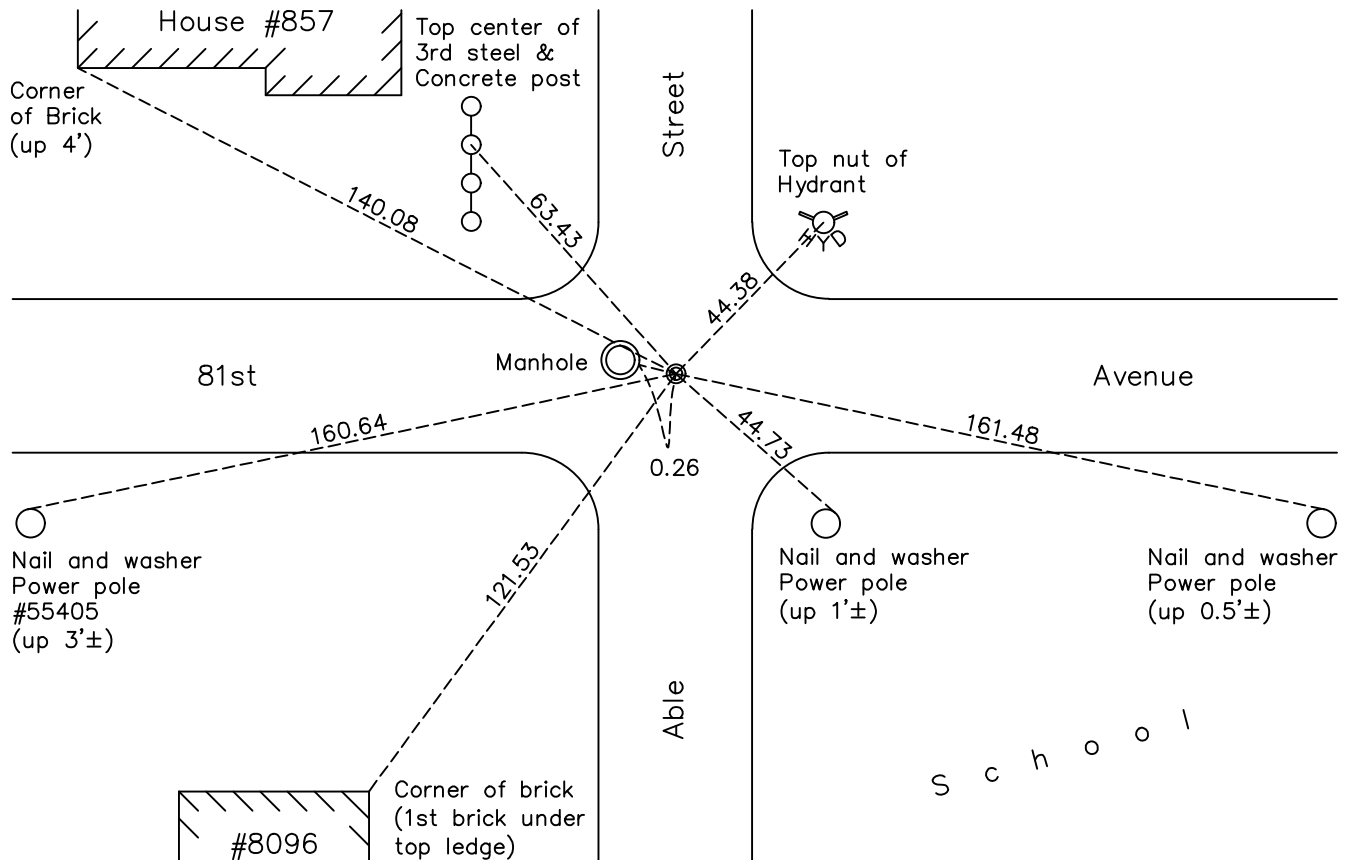
East 1/4 Corner of Sec. 2 Township 30 Range 24

On the 2nd day of November, 1946, the described corner was evidenced by a concrete monument

and to perpetuate the location of said corner, at the exact location thereof, a permanent marker was placed consisting of a 1/2" iron pipe

AND on the 19th day of August, 2022, said permanent marker was found and the ties were updated.

Updated reference ties are as shown below.



Revision Date
12/21/22

N.A.D. 1983 Coordinates
(1996 Adjustment)

County Project Coordinates	
Northing	<u>129095.2483</u>
Easting	<u>504724.9179</u>
Date	<u>8/13/03</u>

I hereby certify that this United States public land survey monument record is correct and complete to the best of my knowledge and belief.

David Zieglmeier Date 12/11/23

David Zieglmeier Anoka County Surveyor
Minnesota License Number 46179

HISTORY OF GOVERNMENT CORNER

Page No. 13

County of Anoka

State of Minnesota

East 1/4 Corner of Sec. 2 Township 30 Range 24

CORNER HISTORY:

November 2, 1946 - Harvey Cartwright set a concrete monument flush using area resurvey. Established ties to concrete monument.

August 18, 1960 - Found concrete monument down 2.5' with an iron pipe on the South side. Set cast iron monument flush with road on top of concrete monument. Updated ties.

May 12, 1964 - Found cast iron monument flush and updated ties.

April 29, 1965 - Found cast iron monument and updated ties.

September 27, 1966 - Found cast iron monument and updated ties.

August 14, 1970 - Found cast iron monument and updated ties.

June 24, 1974 - Found cast iron monument and updated ties.

July 28, 1977 - Found cast iron monument and updated ties.

July 28, 1977 - Found cast iron monument and updated ties.

July 11, 1980 - Found cast iron monument and updated ties.

June 24, 1986 - Found cast iron monument and updated ties.

July 24, 1989 - Found cast iron monument and updated ties.

December 11, 1990 - Reset corner with 1/2" iron pipe after construction because of proximity to manhole. Updated ties.

December 21, 1990 - Found 1/2" iron pipe and updated ties.

August 2, 1994 - Found 1/2" iron pipe and updated ties.

February 18, 1999 - Found 1/2" iron pipe and updated ties.

August 13, 2003 - Established NAD 1983 (1996 adj.) Anoka County project coordinates by static GPS methods.

August 19, 2008 - Found 1/2" iron pipe and updated ties.

November 17, 2014 - Found P.K. nail. Checked position by VRS GPS methods and corner ties.

April 1, 2015 - Set 1/2" iron pipe with cap using static GPS methods. Verified position by VRS GPS methods. Updated ties.

November 25, 2019 - Found 1/2" iron pipe with cap. Verified position by VRS GPS methods. Updated ties.

August 19, 2022 - Found 1/2" iron pipe with cap. Verified position by VRS GPS methods. Updated ties.