

CERTIFICATE OF LOCATION OF GOVERNMENT CORNER

County of Anoka

State of Minnesota

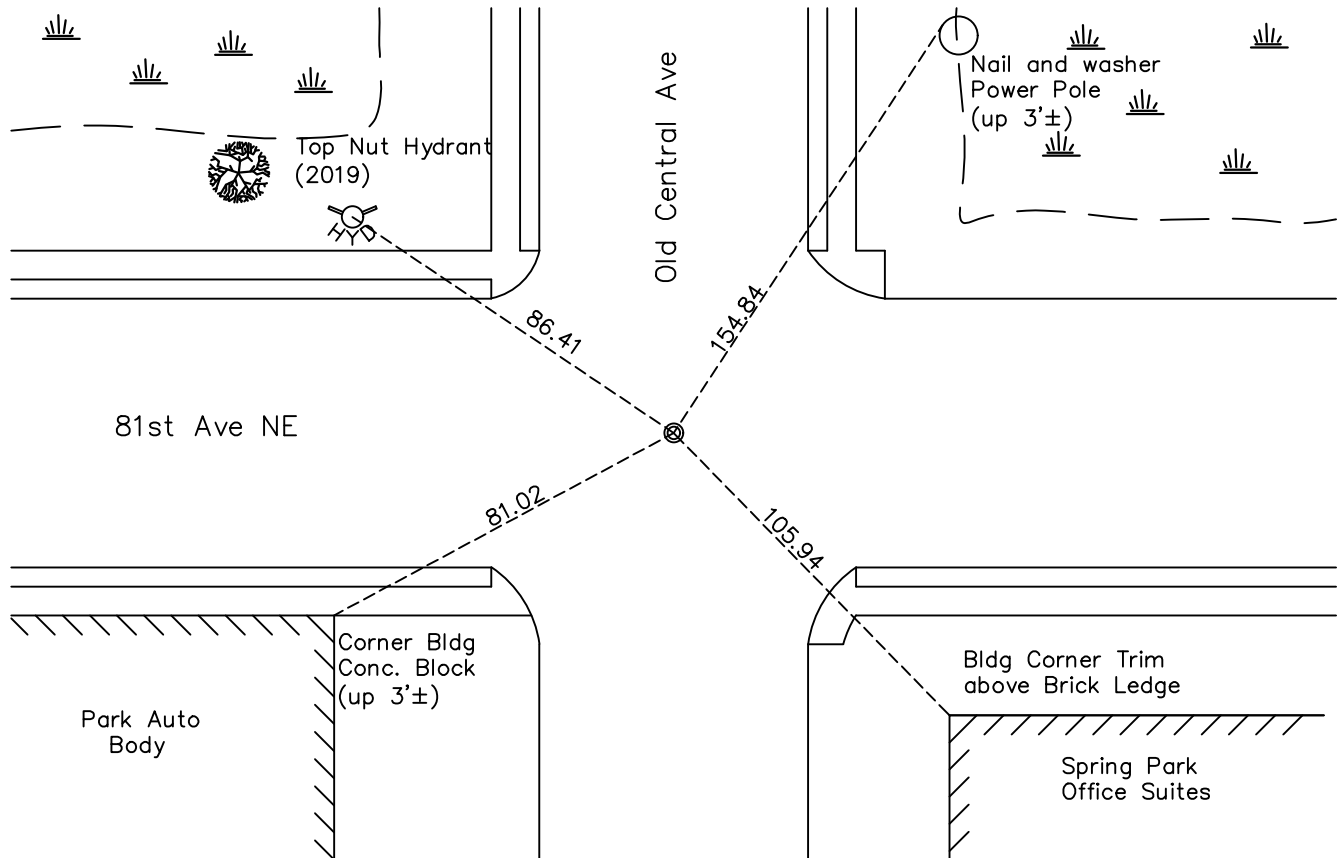
Center Corner of Sec. 1 Township 30 Range 24

On the 1st day of September, 1964, the described corner was evidenced by Steel Pin

and to perpetuate the location of said corner, at the exact location thereof, a permanent marker was placed consisting of a P.K. Steel Spike

AND on the 23rd day of August, 2023, said permanent marker was reset with a 1/2" X 2' rebar with Aluminum cap and punchmark and the ties were re-established

Updated reference ties are as shown below.



Revision Date

8/28/2023

N.A.D. 1983 Coordinates
(2011 Adjustment)

County Project Coordinates	
Northing	<u>129074.743</u>
Easting	<u>607384.171</u>
Date	<u>8/23/2023</u>

I hereby certify that this United States public land survey monument record is correct and complete to the best of my knowledge and belief.

David Zieglmeier Date 12/11/23

David M. Zieglmeier, Anoka County Surveyor
Minnesota License Number 46179

HISTORY OF GOVERNMENT CORNER

County of Anoka

State of Minnesota

Center Corner of Sec. 1 Township 30 Range 24

CORNER HISTORY:

September 1, 1964 - Set P.K. Nail using tie notes from March 1961

July 7, 1966 - Found P.K. Nail and update ties

August 17, 1970 - Found P.K. Nail and updated ties

July 24, 1974 - Found P.K. Nail and updated ties

July 28, 1977 - Found P.K. Nail and updated ties

July 11, 1980 - Found P.K. Nail and updated ties

June 24, 1986 - Found P.K. Nail and updated ties

July 3, 1989 - Found P.K. Nail and updated ties

August 24, 2023 - Center position was reset with a 1/2" X 2' rebar with Aluminum cap and punch mark set flush using RTK GPS method. Re-established ties to the Center monument.