

# CERTIFICATE OF LOCATION OF GOVERNMENT CORNER

County of Anoka

State of Minnesota

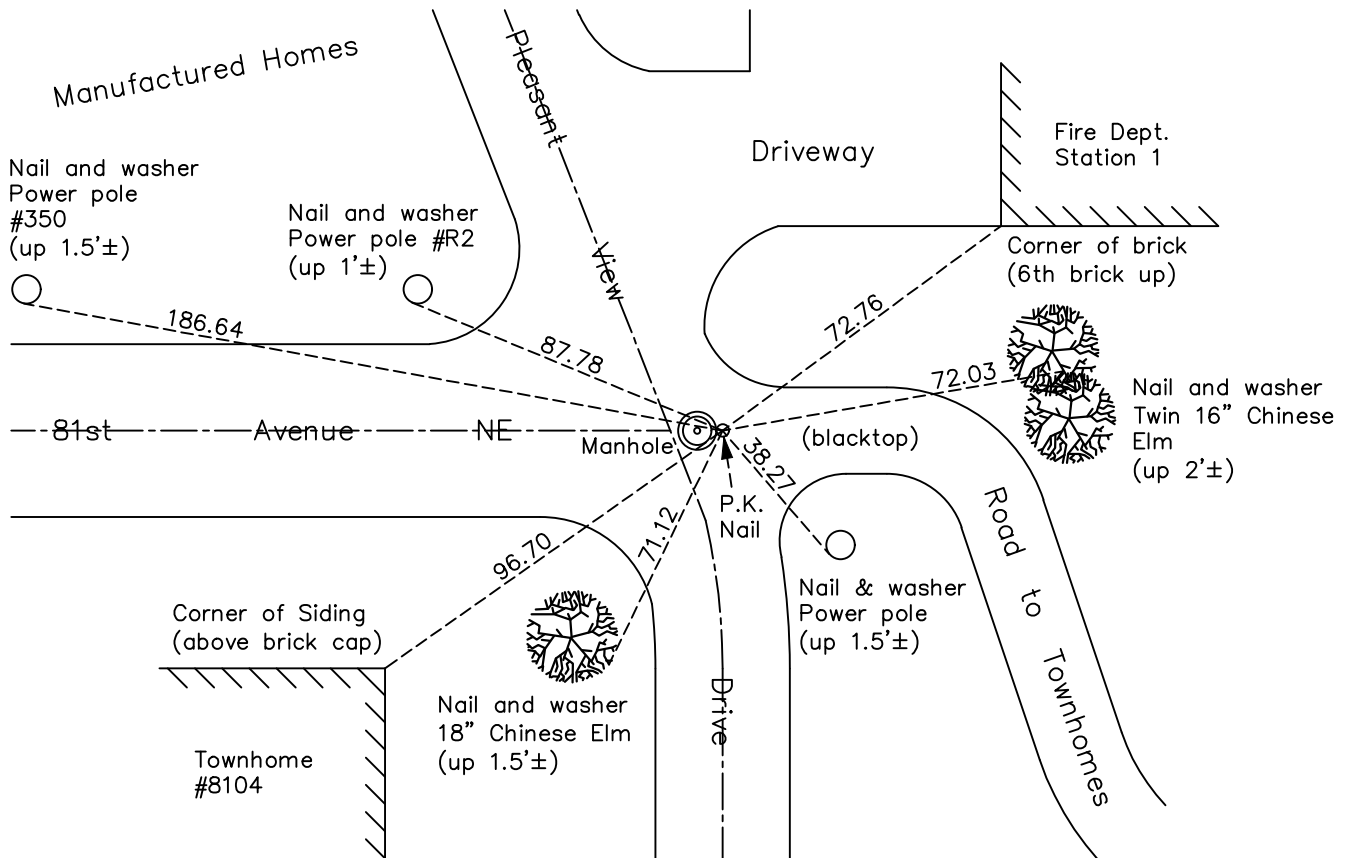
## East 1/4 Corner of Sec. 1 Township 30 Range 24

On the 13th day of September, 1966, the described corner was evidenced by area resurvey

and to perpetuate the location of said corner, at the exact location thereof, a permanent marker was placed consisting of a P.K. nail

AND on the 5th day of August, 2022, said permanent marker was PK set on east edge of manhole rim on C/L-C/L of Pleasant View Drive and 81st Avenue extended. The ties were updated.

Updated reference ties are as shown below.



Revision Date  
12/21/22

N.A.D. 1983 Coordinates  
(1996 Adjustment)

County Project Coordinates	
Northing	<u>129054.3385</u>
Easting	<u>510030.4091</u>
Date	<u>11/18/03</u>

I hereby certify that this United States public land survey monument record is correct and complete to the best of my knowledge and belief.

*David Zieglmeier* Date 12/11/23

David Zieglmeier Anoka County Surveyor  
Minnesota License Number 46179

# HISTORY OF GOVERNMENT CORNER

Page No. 15

County of Anoka

State of Minnesota

## East 1/4 Corner of Sec. 1 Township 30 Range 24

### **CORNER HISTORY:**

April 2, 1943 - Found 8" x 8" granite monument up 4" by Harvey Cartwright. Updated ties.

May 19, 1961 - Found granite monument missing. Found boat spike in centerline road. Updated ties to spike.

July 28, 1964 - Found boat spike and updated ties.

July 7, 1966 - Found boat spike and updated ties.

September 13, 1966 - Set P.K. nail on East side of manhole after construction. Updated ties to P.K. nail.

August 23, 1967 - Found P.K. nail and updated ties.

August 14, 1970 - Found P.K. nail and updated ties.

June 24, 1973 - Found P.K. nail and updated ties.

May 14, 1975 - Ramsey County found the P.K. nail and set two cast iron monument witness corners. One 33' South on line and one 33' West on line. Tied out witness corners.

December 19, 1975 - Found cast iron monument witness corners set by Ramsey County and verified distances.

May 4, 1977 - Replaced Southerly cast iron monument witness corner.

July 28, 1977 - Found P.K. nail and updated ties.

February 15, 1978 - Found P.K. nail and updated ties.

July 11, 1980 - Found P.K. nail and updated ties.

June 24, 1986 - Found P.K. nail and updated ties.

July 3, 1989 - Found P.K. nail and updated ties.

August 2, 1994 - Found P.K. nail and updated ties.

May 2, 2002 - Found P.K. nail. Set construction ties prior to road construction.

January 15, 2003 - Found P.K. nail and updated ties.

November 18, 2003 - Established NAD 1983 (1996 adj.) Anoka County project coordinates by static GPS methods.

8/28/2008, 11/13/2014, 11/26/2019 - Found P.K. nail. Verified position by VRS GPS methods. Updated ties.

August 5, 2022 - P.K. Nail not found. Set new P.K. nail, verified position by VRS GPS methods & updated ties.