

CERTIFICATE OF LOCATION OF GOVERNMENT CORNER

County of Anoka

State of Minnesota

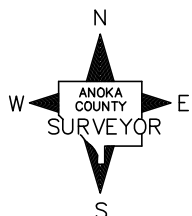
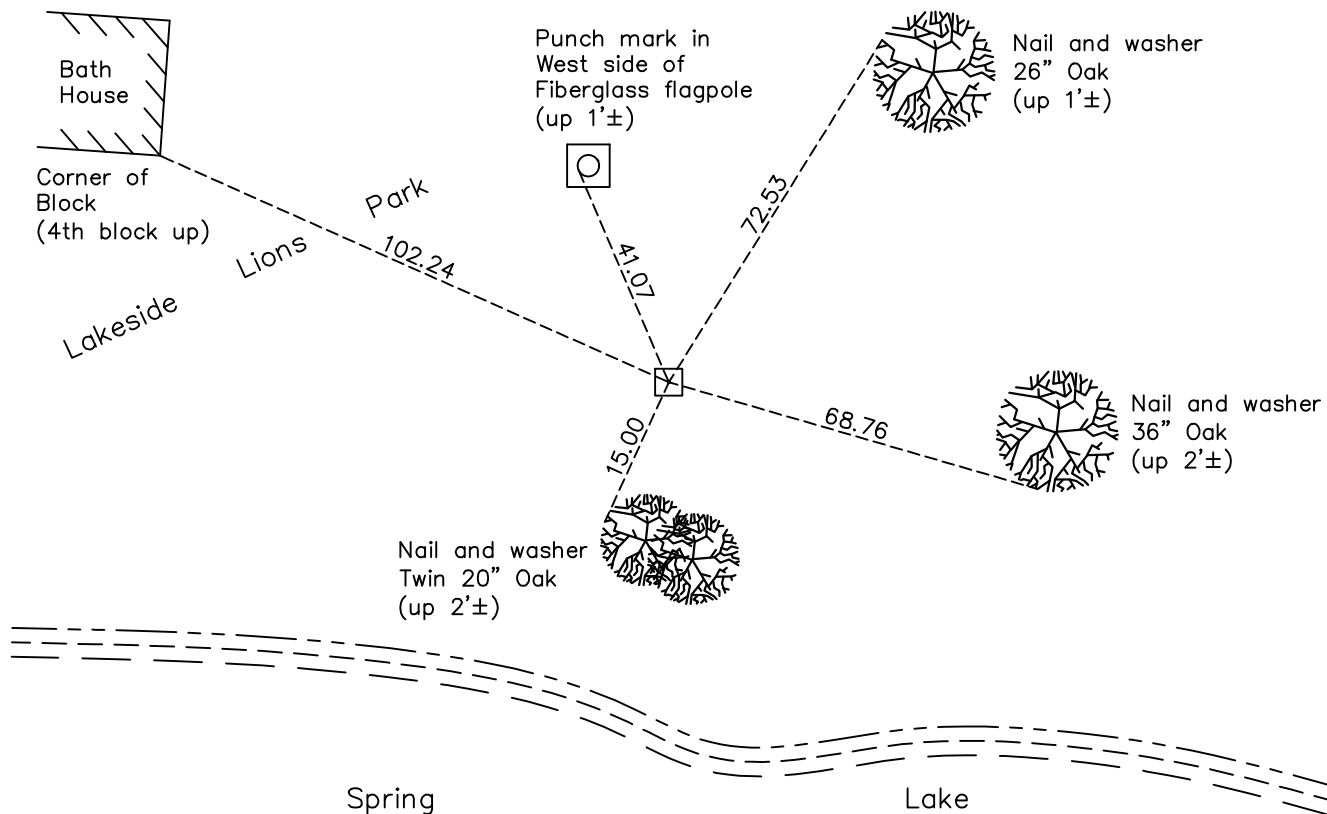
Meander Corner of Sec. 1 Township 30 Range 24 (on east line of section)

On the 19th day of May, 1961, the described corner was evidenced by a granite
monument

and to perpetuate the location of said corner, at the exact location thereof, a permanent marker
was placed consisting of the same granite monument with an 'Anoka County' cap in the center

AND on the 9th day of August, 2022, said permanent marker was found down 0.5'± and
the ties were updated

Updated reference ties are as shown below.



Revision Date
12/21/22

N.A.D. 1983 Coordinates
(1996 Adjustment)

County Project Coordinates	
Northing	<u>127355.6103</u>
Easting	<u>510031.8003</u>
Date	<u>11/18/03</u>

I hereby certify that this United States public land survey monument record is correct and complete to the best of my knowledge and belief.

David Zieglmeier Date 12/11/23

David Zieglmeier Anoka County Surveyor
 Minnesota License Number 46179

HISTORY OF GOVERNMENT CORNER

Page No. 16

County of Anoka

State of Minnesota

Meander Corner of Sec. 1 Township 30 Range 24
(on east line of section)

CORNER HISTORY:

October 6, 1947 - Harvey Cartwright found a 8" x 8" granite monument down 1'. Updated ties.

May 19, 1961 - Found granite monument down 0.2'. Updated ties.

July 28, 1964 - Found granite monument and updated ties.

July 7, 1966 - Found granite monument and updated ties.

August 17, 1970 - Found granite monument and updated ties.

June 24, 1974 - Found granite monument and updated ties.

July 28, 1977 - Found granite monument and updated ties.

July 22, 1980 - Found granite monument and updated ties.

August 1, 1983 - Found granite monument and updated ties.

June 24, 1986 - Found granite monument and updated ties.

July 13, 1989 - Found granite monument and updated ties.

July 28, 1994 - Found granite monument and updated ties.

August 2, 1994 - Found granite monument and updated ties.

November 18, 2003 - Established NAD 1983 (1996 adj.) Anoka County project coordinates by static GPS methods.

August 28, 2008 - Found granite monument with Anoka County cap in the center. Updated ties.

November 13, 2014 - Found granite monument down 0.5'± with Anoka County cap in the center. Verified position by VRS GPS methods. Updated ties.

November 26, 2019 - Found granite monument down 0.5'± with Anoka County cap in the center. Verified position by VRS GPS methods. Updated ties.

August 9, 2022 - Found granite monument down 0.5'± with Anoka County cap in the center. Verified position by VRS GPS methods. Updated ties.