

CERTIFICATE OF LOCATION OF GOVERNMENT CORNER

County of Anoka

State of Minnesota

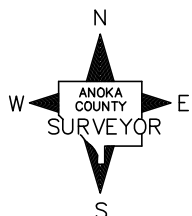
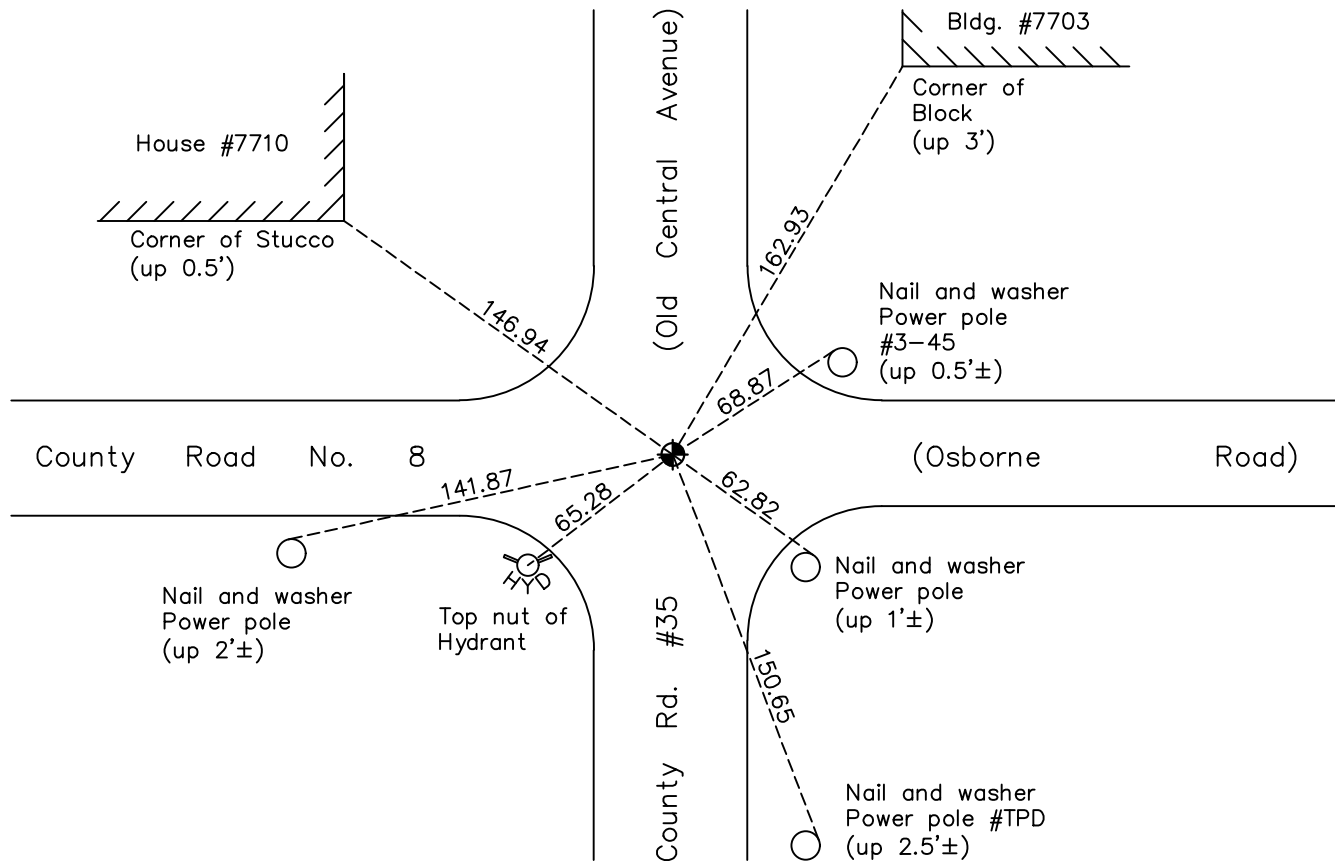
North 1/4 Corner of Sec. 12 Township 30 Range 24

On the 12th day of September, 1960, the described corner was evidenced by a 1/2" iron pipe

and to perpetuate the location of said corner, at the exact location thereof, a permanent marker was placed consisting of a cast iron monument

AND on the 10th day of August, 2022, said permanent marker was found flush and the ties were updated

Updated reference ties are as shown below.



Revision Date
 12/21/22

N.A.D. 1983 Coordinates
(1996 Adjustment)

County Project Coordinates	
Northing	<u>126420.6846</u>
Easting	<u>507366.8447</u>
Date	<u>8/13/03</u>

I hereby certify that this United States public land survey monument record is correct and complete to the best of my knowledge and belief.

David Zieglmeier Date 12/11/23

David Zieglmeier Anoka County Surveyor
 Minnesota License Number 46179

HISTORY OF GOVERNMENT CORNER

Page No. 18

County of Anoka

State of Minnesota

North 1/4 Corner of Sec. 12 Township 30 Range 24

CORNER HISTORY:

September 4, 1956 - Found iron pipe and updated ties by Minnesota Highway Department.

January 31, 1958 - Found solid iron pipe in centerline of concrete road and updated ties by C.O. Georgi.

September 12, 1960 - Found 1/2" iron pin flush and updated ties.

March 24, 1964 - Found 1/2" square iron pin flush. Updated ties prior to road construction.

July 20, 1966 - Set the head of a cast iron monument flush with road, on top of 1/2" iron pin. Updated ties.

August 17, 1970 - Found head of cast iron monument and updated ties.

June 24, 1974 - Found head of cast iron monument and updated ties.

July 28, 1977 - Found head of cast iron monument and updated ties.

July 27, 1978 - Found head of cast iron monument and updated ties.

October 4, 1979 - Found head of cast iron monument missing. Found iron rod that the cast iron head was welded to. Set new cast iron monument top flush in concrete. Updated ties.

July 16, 1980 - Found cast iron monument top and updated ties.

July 2, 1986 - Found cast iron monument top and updated ties.

August 7, 1989 - Found cast iron monument top and updated ties.

July 26, 1994 - Found cast iron monument top and updated ties.

July 13, 1998 - Found cast iron monument top and set construction ties prior to road construction.

June 9, 1999 - Set cast iron monument and updated ties.

August 13, 2003 - Established NAD 1983 (1996 adj.) Anoka County project coordinates by static GPS methods.

August 28, 2008 - Found cast iron monument and updated ties.

November 13, 2014 - Found cast iron monument. Verified position by VRS GPS methods. Updated ties.

November 26, 2019 - Found cast iron monument. Verified position by VRS GPS methods. Updated ties.

August 10, 2022 - Found cast iron monument. Verified position by VRS GPS methods. Updated ties.